



Holloman Tract – 1,374± Acres | Yazoo County, Mississippi

Big Black River Timber Tract

A large-scale recreational retreat offering hardwood timber diversity, extensive river frontage, and established infrastructure. The Holloman Tract is built for hunters and families seeking privacy, scale, and a legacy ownership opportunity along the Big Black River.

Description

The Holloman Tract is a 1,374± acre recreational and hardwood timber property located at the end of Holloman Road in Yazoo County, Mississippi, approximately one hour from Jackson. The property offers privacy, size, and diversity rarely found in today's market, making it well-suited for long-term recreational holding.

The tract consists of approximately 925 acres of upland hardwood timber combined with roughly 450 acres of bottomland hardwood situated along a 2.5-mile stretch of the Big Black River. This river corridor provides classic bottomland habitat, seasonal backwater influence, and the potential for waterfowl impoundments.

Multiple age classes of hardwood timber are present, allowing for continued stewardship, selective management, and long-term sustainability while maintaining excellent habitat conditions. The property has numerous established food plots and natural travel corridors that support excellent deer and turkey populations.

Infrastructure is already in place with a well-developed internal road system that provides access throughout the tract for hunting, management, and year-round enjoyment. The end-of-the-road location enhances privacy and limits outside traffic, creating a quiet and secure ownership setting.

Property Highlights

- 1,374± total acres in Yazoo County, Mississippi
 - Approximately 925 acres of upland hardwood timber
 - Approximately 450 acres of bottomland hardwood
 - 2.5 miles of frontage along the Big Black River
 - Excellent deer and turkey habitat
 - Numerous established food plots
 - Multiple age classes of hardwood timber
 - Strong internal road system providing access throughout the property
 - End-of-the-road location offering privacy and seclusion
 - Approximately one hour from Jackson, Mississippi
-

Price

\$5,770,800

Contact

Joe R. Mallard

Sartain's Heritage Properties
601.927.8222
jmallard@sartainsheritage.com

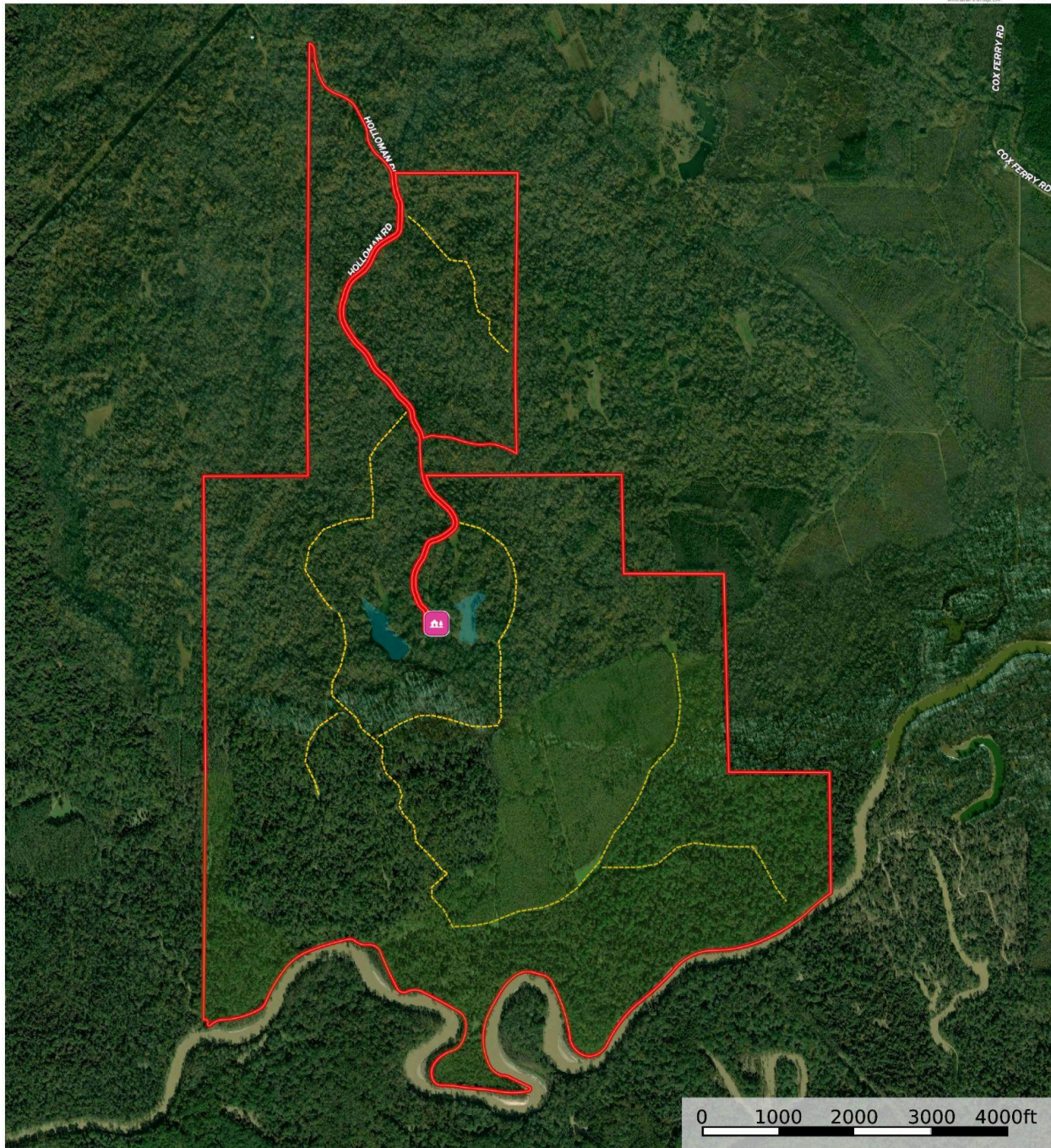
Jacob Sartain

Sartain's Heritage Properties
662.836.6048
jsartain@shpland.com

Holloman Tract Map

[Holloman Road Map](#)

OakBluff_HollomanRoad
Yazoo County, Mississippi, 1374 AC +/-




 Cabin  Road / Trail  River Bottom  Pond / Tank  Boundary

Parker Sartain
P: 6015062398

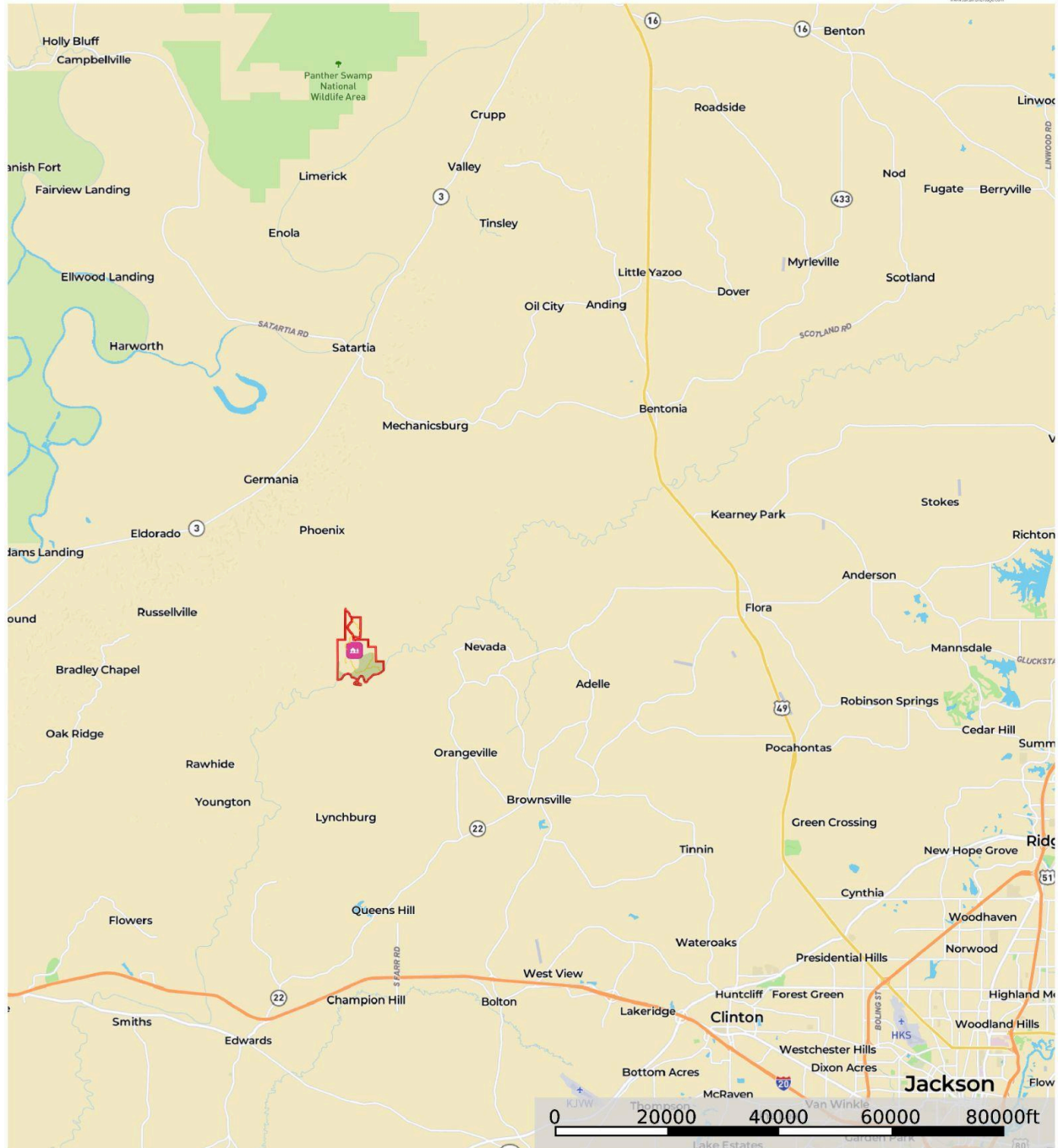
www.sartainsheritage.com

106 First Choice Drive

 The information contained herein was obtained from sources deemed to be reliable. Land ID® Services makes no warranties or guarantees as to the completeness or accuracy thereof.

OakBluff_HollomanRoad

Yazoo County, Mississippi, 1374 AC +/-



Cabin
 Road / Trail
 River Bottom
 Pond / Tank
 Boundary

Parker Sartain
 P: 6015062398 www.sartainsheritage.com 106 First Choice Drive

The information contained herein was obtained from sources deemed to be reliable. Land id® Services makes no warranties or guarantees as to the completeness or accuracy thereof.