

27.24± ACRES
COVINGTON COUNTY, AL
\$136,200



SMALLTOWN
HUNTING PROPERTIES
& REAL ESTATESM

OFFICE (334) 535-0242 | WWW.SMALLTOWNPROPERTIES.COM

THE COVINGTON 27.24

PROPERTY PROFILE

LOCATION:

- Ferrell Road
Red Level, AL 36474
- Covington County
- 7± Miles SE of Red Level
- 8.6± Miles NW of Andalusia
- 89.4± Miles N of Destin, FL

COORDINATES:

- 31.3292, -86.56685

PROPERTY USE:

- Hunting
- Recreational
- Potential Home Site

PROPERTY INFORMATION:

- 27.24± Acres
- 1,400'± of Road Frontage
- Power & Water
- 4" Well
- Camp Creek
Traverses the Land
- Mature Timber

TAX INFORMATION:

- 14-03-08-0-000-007.000
- \$46.04 for 2024



SMALLTOWN
HUNTING PROPERTIES
& REAL ESTATESM

RUSS WILKERSON

QUALIFYING BROKER, SOUTH CENTRAL ALABAMA

C: 334-268-9098

O: 334-535-0242

russ@smalltownproperties.com

215 E Sixth St. - Luverne, AL 36049

smalltownproperties.com

Information is believed to be accurate but not guaranteed.

WELCOME TO THE COVINGTON 27.24

WELCOME TO THE COVINGTON 27.24, ALSO FONDLY KNOWN AS THE FERRELL ROAD ESTATE. Enjoy 27.24± acres of pristine Alabama countryside nestled along the quiet stretches of Ferrell Road, offering a rare opportunity to secure a slice of southern tranquility. Whether you envision a secluded family home or a premier recreational retreat, this Covington County property delivers both stature and natural beauty.

The estate is defined by its impressive 1,400± feet of road frontage, providing ease of access and a commanding presence. The topography yields breathtaking, panoramic views of the rolling countryside and the waters of Camp Creek, offering a daily masterpiece.

The acreage is heavily adorned with a canopy of mature hardwoods and towering pines, providing privacy and significant natural value. Access throughout is made convenient by a newly established trail system that meanders about, allowing for effortless exploration and enjoyment of the terrain.



SMALLTOWN
HUNTING PROPERTIES
& REAL ESTATESM

RUSS WILKERSON

QUALIFYING BROKER, SOUTH CENTRAL ALABAMA

C: 334-268-9098

O: 334-535-0242

russ@smalltownproperties.com

215 E Sixth St. - Luverne, AL 36049

smalltownproperties.com

Information is believed to be accurate but not guaranteed.

MORE ABOUT THE COVINGTON 27.24

The Ferrell Road Estate is exceptionally “build-ready” with power and water available at the line, complemented by an established, private deep well.

The property is a sanctuary for the outdoorsman or the visionary homeowner. Its diverse habitat makes it a premier hunting ground, while its elevated vistas offer several incomparable homesites. The Covington 27.24 is more than mere acreage; it is an invitation to plant roots in a landscape that feels a world away yet remains perfectly accessible.

**To learn more and schedule a personal tour, contact
Russ Wilkerson today and experience #TheSmallTownWay!**



SMALLTOWN
HUNTING PROPERTIES
& REAL ESTATESM

RUSS WILKERSON

QUALIFYING BROKER, SOUTH CENTRAL ALABAMA

C: 334-268-9098

O: 334-535-0242

russ@smalltownproperties.com

215 E Sixth St. - Luverne, AL 36049

smalltownproperties.com

Information is believed to be accurate but not guaranteed.

27.24± ACRES

COVINGTON COUNTY, ALABAMA



SMALLTOWN
HUNTING PROPERTIES
& REAL ESTATESM

RUSS WILKERSON

QUALIFYING BROKER, SOUTH CENTRAL ALABAMA

C: 334-268-9098

O: 334-535-0242

russ@smalltownproperties.com

215 E Sixth St. - Luverne, AL 36049

smalltownproperties.com

Information is believed to be accurate but not guaranteed.

27.24± ACRES

COVINGTON COUNTY, ALABAMA



SMALLTOWN
HUNTING PROPERTIES
& REAL ESTATESM

RUSS WILKERSON

QUALIFYING BROKER, SOUTH CENTRAL ALABAMA

C: 334-268-9098

O: 334-535-0242

russ@smalltownproperties.com

215 E Sixth St. - Luverne, AL 36049

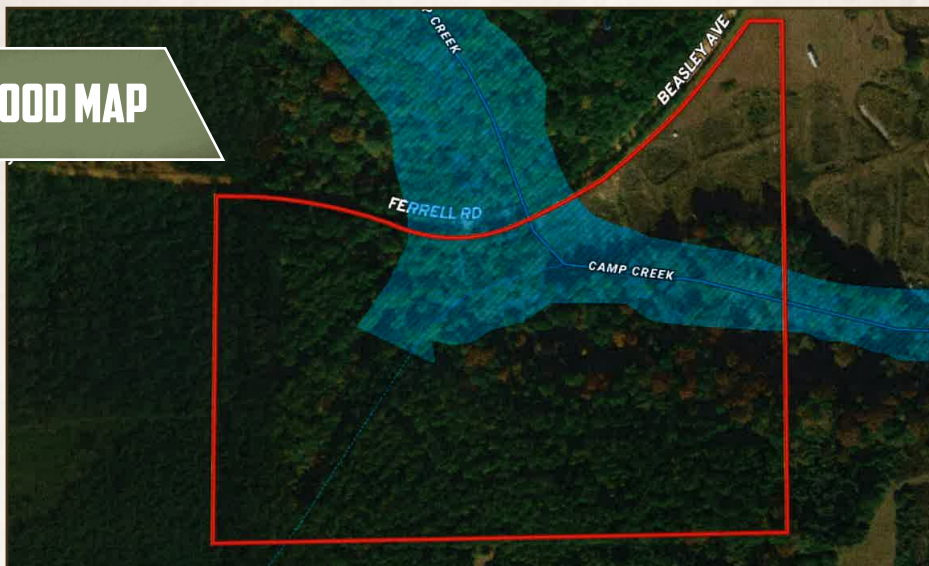
smalltownproperties.com

Information is believed to be accurate but not guaranteed.

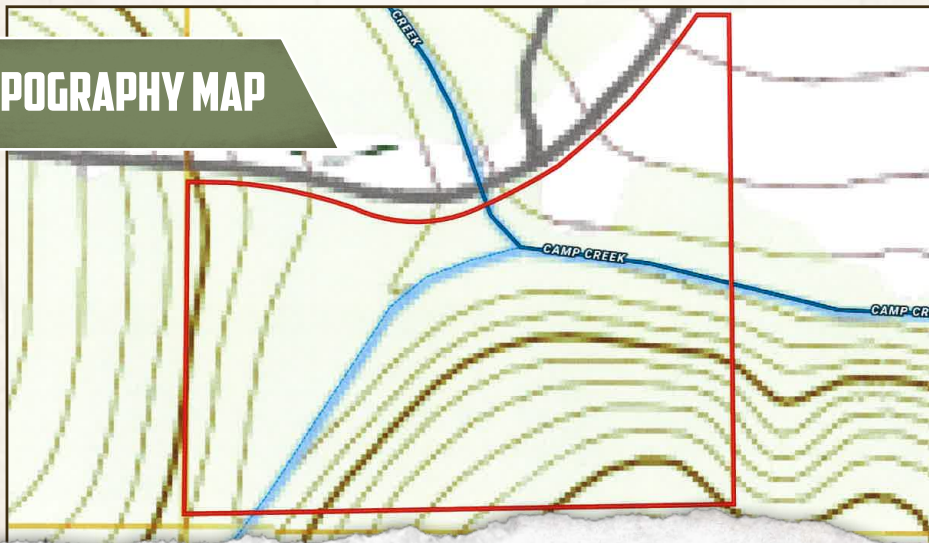
27.24± ACRES

COVINGTON COUNTY, ALABAMA

FLOOD MAP



TOPOGRAPHY MAP



SMALLTOWN
HUNTING PROPERTIES
& REAL ESTATESM

RUSS WILKERSON

QUALIFYING BROKER, SOUTH CENTRAL ALABAMA

C: 334-268-9098

O: 334-535-0242

russ@smalltownproperties.com

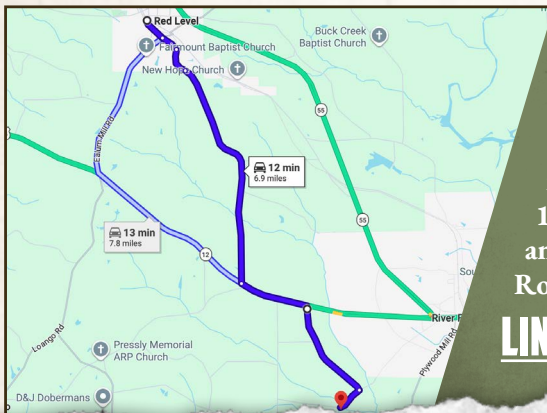
215 E Sixth St. - Luverne, AL 36049

smalltownproperties.com

Information is believed to be accurate but not guaranteed.

27.24± ACRES **COVINGTON COUNTY, ALABAMA**

land id. LINK



Directions From Red Level, AL:
Travel 0.6 miles south on Smiley Street/Main Street. Turn right on Wallace Drive and proceed 0.4 miles. Continue on County Road 21 for 3.2 miles. Turn left on US-84 E and proceed 1.0 mile. Turn right on Bethlehem Road and travel 1.4 miles. Turn right on Ferrell Road and the property will be on the left.

LINK TO GOOGLE MAP DIRECTIONS



SMALLTOWN
HUNTING PROPERTIES
& REAL ESTATESM

RUSS WILKERSON

QUALIFYING BROKER, SOUTH CENTRAL ALABAMA

C: 334-268-9098

O: 334-535-0242

russ@smalltownproperties.com

215 E Sixth St. - Luverne, AL 36049

smalltownproperties.com

Information is believed to be accurate but not guaranteed.