



This information submitted is not guaranteed. Although obtained from reliable sources, all information should be confirmed prior to use or reliance upon the information. This document may not be reproduced in whole or in part without the express written consent of NAI Columbia.







This information submitted is not guaranteed. Although obtained from reliable sources, all information should be confirmed prior to use or reliance upon the information. This document may not be reproduced in whole or in part without the express written consent of NAI Columbia.





This information submitted is not guaranteed. Although obtained from reliable sources, all information should be confirmed prior to use or reliance upon the information. This document may not be reproduced in whole or in part without the express written consent of NAI Columbia.





This information submitted is not guaranteed. Although obtained from reliable sources, all information should be confirmed prior to use or reliance upon the information. This document may not be reproduced in whole or in part without the express written consent of NAI Columbia.





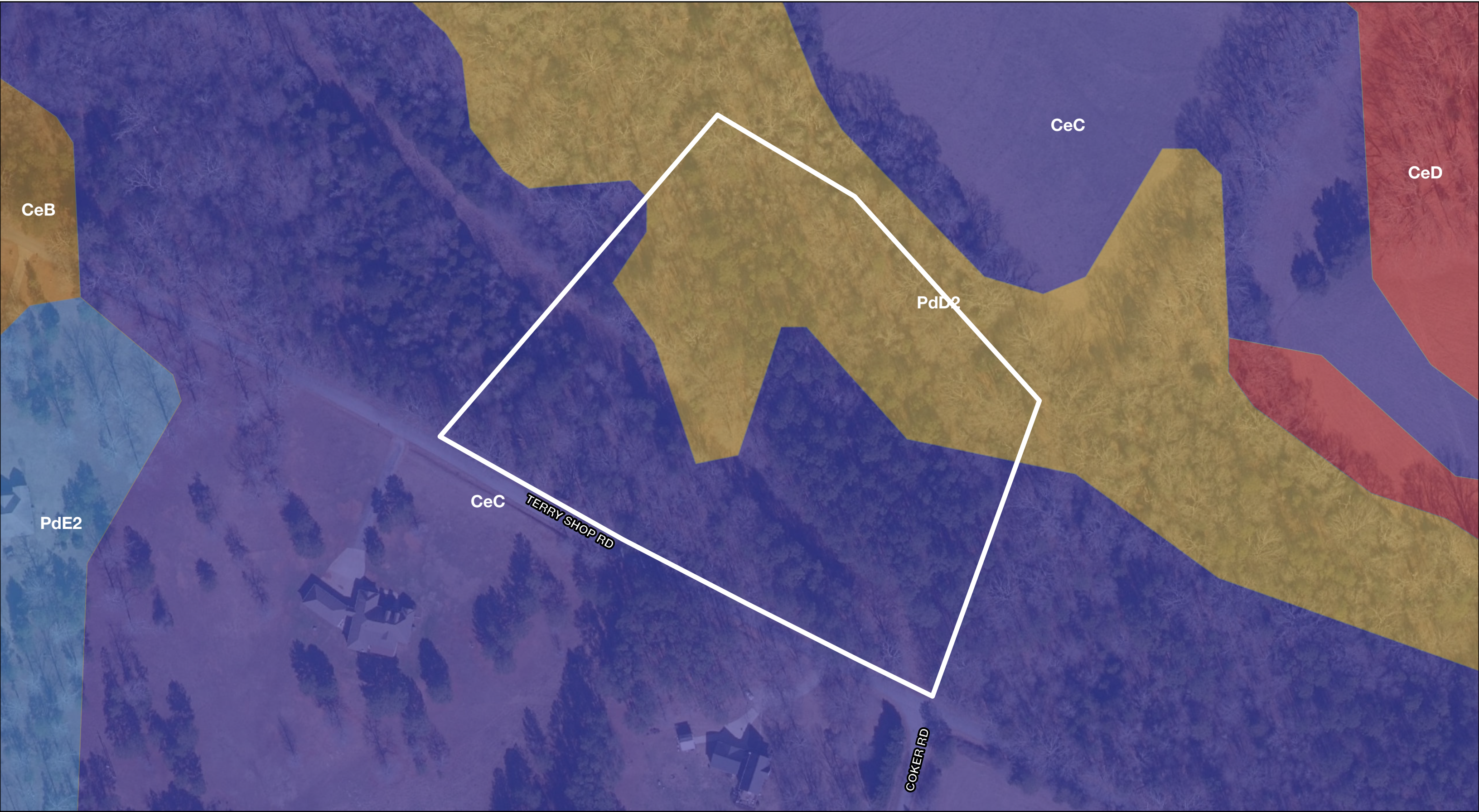
This information submitted is not guaranteed. Although obtained from reliable sources, all information should be confirmed prior to use or reliance upon the information. This document may not be reproduced in whole or in part without the express written consent of NAI Columbia.





This information submitted is not guaranteed. Although obtained from reliable sources, all information should be confirmed prior to use or reliance upon the information. This document may not be reproduced in whole or in part without the express written consent of NAI Columbia.





This information submitted is not guaranteed. Although obtained from reliable sources, all information should be confirmed prior to use or reliance upon the information. This document may not be reproduced in whole or in part without the express written consent of NAI Columbia.



Map Unit Description (Brief, Generated)

Greenville County, South Carolina

[Minor map unit components are excluded from this report]

Map unit: CeB - Cecil sandy loam, 2 to 6 percent slopes

Component: Cecil (95%)

The Cecil component makes up 95 percent of the map unit. Slopes are 2 to 6 percent. This component is on interfluves on southern piedmonts. The parent material consists of residuum weathered from gneiss and/or granite. Depth to a root restrictive layer is greater than 60 inches. The natural drainage class is well drained. Water movement in the most restrictive layer is moderately high. Available water to a depth of 60 inches (or restricted depth) is moderate. Shrink-swell potential is low. This soil is not flooded. It is not ponded. There is no zone of water saturation within a depth of 72 inches. Organic matter content in the surface horizon is about 1 percent. This component is in the F136XY820GA Acidic upland forest, moist ecological site. Nonirrigated land capability classification is 2e. This soil does not meet hydric criteria.

Map unit: CeC - Cecil sandy loam, 6 to 10 percent slopes

Component: Cecil (88%)

The Cecil component makes up 88 percent of the map unit. Slopes are 6 to 10 percent. This component is on interfluves on southern piedmonts. The parent material consists of residuum weathered from granite and/or residuum weathered from gneiss. Depth to a root restrictive layer is greater than 60 inches. The natural drainage class is well drained. Water movement in the most restrictive layer is moderately high. Available water to a depth of 60 inches (or restricted depth) is moderate. Shrink-swell potential is low. This soil is not flooded. It is not ponded. There is no zone of water saturation within a depth of 72 inches. Organic matter content in the surface horizon is about 1 percent. This component is in the F136XY820GA Acidic upland forest, moist ecological site. Nonirrigated land capability classification is 3e. This soil does not meet hydric criteria.

Map unit: CeD - Cecil-Cataula complex, 10 to 15 percent slopes, moderately eroded

Component: Cecil, moderately eroded (65%)

The Cecil, moderately eroded component makes up 65 percent of the map unit. Slopes are 10 to 15 percent. This component is on interfluves on southern piedmonts. The parent material consists of residuum weathered from granite and/or residuum weathered from gneiss. Depth to a root restrictive layer is greater than 60 inches. The natural drainage class is well drained. Water movement in the most restrictive layer is moderately high. Available water to a depth of 60 inches (or restricted depth) is high. Shrink-swell potential is low. This soil is not flooded. It is not ponded. There is no zone of water saturation within a depth of 72 inches. Organic matter content in the surface horizon is about 1 percent. This component is in the F136XY820GA Acidic upland forest, moist ecological site. Nonirrigated land capability classification is 4e. This soil does not meet hydric criteria.

Greenville County, South Carolina

[Minor map unit components are excluded from this report]

Map unit: CeD - Cecil-Cataula complex, 10 to 15 percent slopes, moderately eroded

Component: Cataula, moderately eroded (25%)

The Cataula, moderately eroded component makes up 25 percent of the map unit. Slopes are 10 to 15 percent. This component is on interfluves on southern piedmonts. The parent material consists of residuum weathered from granite and/or residuum weathered from gneiss. Depth to a root restrictive layer, fragipan, is 20 to 43 inches. The natural drainage class is moderately well drained. Water movement in the most restrictive layer is moderately low. Available water to a depth of 60 inches (or restricted depth) is low. Shrink-swell potential is low. This soil is not flooded. It is not ponded. A seasonal zone of water saturation is at 33 inches during January, February, March, December. Organic matter content in the surface horizon is about 1 percent. This component is in the F136XY810SC Acidic upland forest, seasonally wet ecological site. Nonirrigated land capability classification is 6e. This soil does not meet hydric criteria.

Map unit: PdD2 - Pacolet clay loam, 10 to 15 percent slopes, eroded

Component: Pacolet (100%)

The Pacolet component makes up 100 percent of the map unit. Slopes are 10 to 15 percent. This component is on hillslopes on piedmonts. The parent material consists of clayey residuum weathered from granite and gneiss. Depth to a root restrictive layer is greater than 60 inches. The natural drainage class is well drained. Water movement in the most restrictive layer is moderately high. Available water to a depth of 60 inches (or restricted depth) is low. Shrink-swell potential is low. This soil is not flooded. It is not ponded. There is no zone of water saturation within a depth of 72 inches. Organic matter content in the surface horizon is about 1 percent. This component is in the F136XY820GA Acidic upland forest, moist ecological site. Nonirrigated land capability classification is 6e. This soil does not meet hydric criteria.

Map unit: PdE2 - Pacolet clay loam, 15 to 25 percent slopes, eroded

Component: Pacolet (100%)

The Pacolet component makes up 100 percent of the map unit. Slopes are 15 to 25 percent. This component is on hillslopes on piedmonts. The parent material consists of clayey residuum weathered from granite and gneiss. Depth to a root restrictive layer is greater than 60 inches. The natural drainage class is well drained. Water movement in the most restrictive layer is moderately high. Available water to a depth of 60 inches (or restricted depth) is low. Shrink-swell potential is low. This soil is not flooded. It is not ponded. There is no zone of water saturation within a depth of 72 inches. Organic matter content in the surface horizon is about 1 percent. This component is in the F136XY820GA Acidic upland forest, moist ecological site. Nonirrigated land capability classification is 7e. This soil does not meet hydric criteria.



Map Unit Description (Brief, Generated)