

# Country Home on 11.7± Acres

Tallahatchie County | \$270,000



**11404 Tippo Road, Charleston, MS 38921**

A beautifully renovated brick home for sale at 11404 Tippo Road in Charleston, MS, located in Tallahatchie County. Updated in 2020, this charming residence offers 3 bedrooms and 2 bathrooms, providing a generous 3,760 square feet of heated and cooled living space—perfect for comfortable family living. The property also includes a covered carport for convenient parking. Step inside to discover a spacious primary bedroom, complete with a massive walk-in closet offering an abundance of storage. The primary bathroom features a double-sink vanity, a roomy walk-in shower, and a relaxing bathtub—an ideal retreat for unwinding after a long day. The home also includes a versatile bonus room that can easily be transformed into a home office, playroom, or hobby space to suit your lifestyle needs. The generously sized laundry room is designed for efficiency, featuring ample cabinet space and a sink for added convenience. Situated on an expansive 11.7± acres, this property provides plenty of room for outdoor activities and includes both hunting and pastureland. Don't miss the opportunity to make this stunning home yours.

Call Anthony Steen today!

**ANTHONY  
STEEN**

REALTOR®

Office: 601.898.2772

Cell: 662.645.5151

Anthony@TomSmithLand.com



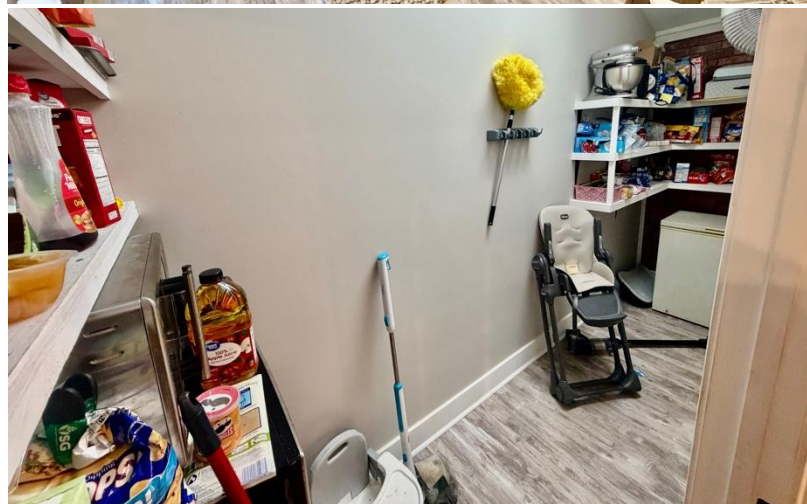
Expect More. Get More.

**A Real Estate Expert You Can Trust**

TomSmithLandandHomes.com

Information is believed to be accurate but not guaranteed.





**A Real Estate Expert**  
*You Can Trust!*

**ANTHONY STEEN**

REALTOR®

O: 601.898.2772 C: 662.645.5151

Anthony@TomSmithLand.com

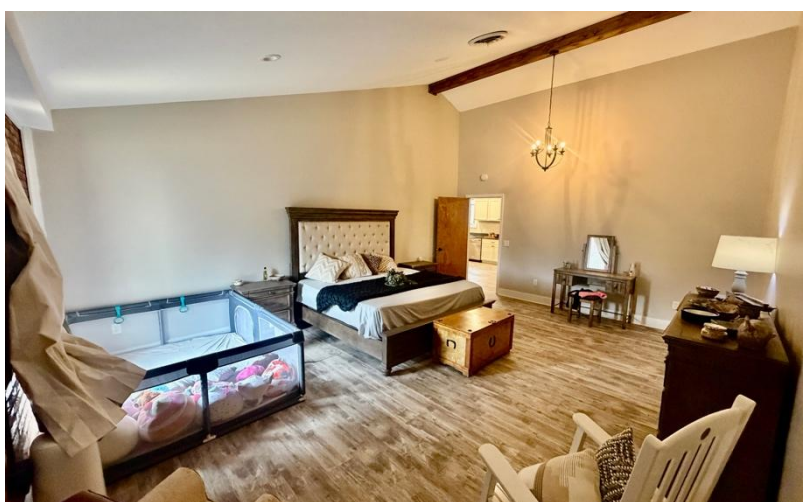
TomSmithLandandHomes.com

**Tom Smith**  
**LAND AND HOMES**

Expect More. Get More.

LandReport  
2011-2025  
AMERICA'S  
**BEST**  
BROKERAGES

Information is believed to be accurate but not guaranteed.



**A Real Estate Expert**  
*You Can Trust!*

**ANTHONY STEEN**

REALTOR®

O: 601.898.2772 C: 662.645.5151

Anthony@TomSmithLand.com

TomSmithLandandHomes.com

**Tom Smith**  
**LAND AND HOMES**

Expect More. Get More.

LandReport  
2011-2025  
AMERICA'S  
**BEST**  
BROKERAGES

Information is believed to be accurate but not guaranteed.



**A Real Estate Expert**  
*You Can Trust!*

**ANTHONY STEEN**  
REALTOR®  
O: 601.898.2772 C: 662.645.5151  
Anthony@TomSmithLand.com  
TomSmithLandandHomes.com

**Tom Smith**  
**LAND AND HOMES**  
Expect More. Get More.

LandReport  
2011-2025  
AMERICA'S  
**BEST**  
BROKERAGES

Information is believed to be accurate but not guaranteed.



**A Real Estate Expert**  
*You Can Trust!*

**ANTHONY STEEN**

REALTOR®

O: 601.898.2772 C: 662.645.5151

Anthony@TomSmithLand.com

TomSmithLandandHomes.com



Expect More. Get More.



Information is believed to be accurate but not guaranteed.



**A Real Estate Expert**  
*You Can Trust!*

**ANTHONY STEEN**

REALTOR®

O: 601.898.2772 C: 662.645.5151

Anthony@TomSmithLand.com

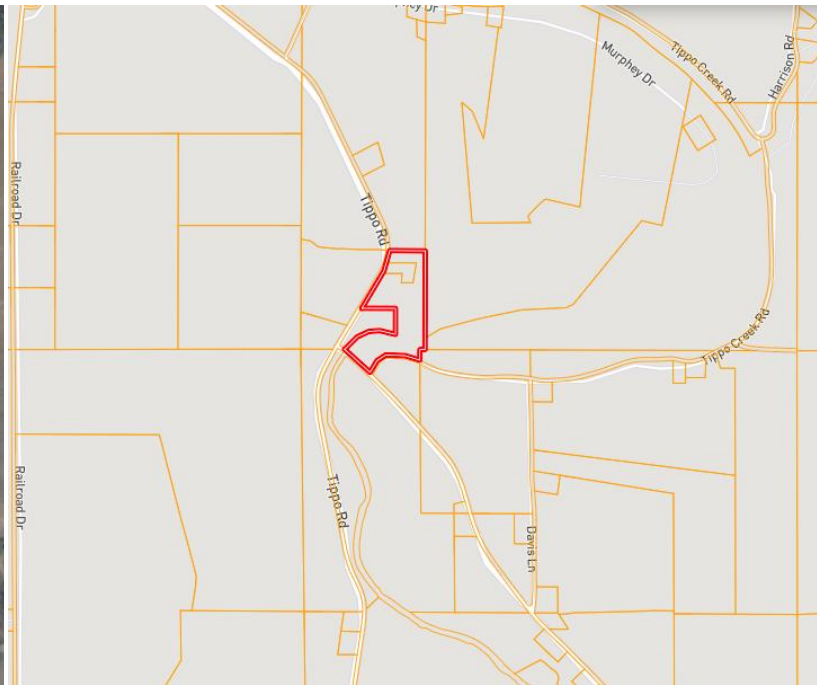
TomSmithLandandHomes.com



Expect More. Get More.



Information is believed to be accurate but not guaranteed.



**Address:** 11404 Tippo Road  
Charleston, MS 38921

**Directions from MS-35 & Hwy 32,**  
**Charleston, MS:** Travel south on MS-35 S  
for 1.6 miles. Turn right onto Hwy 32 W  
for 6.2 miles. Turn left onto Tippo Road.  
After 6.6 miles, the home will be on the  
left. [Google Maps Link](#)



**ANTHONY  
STEEN**

REALTOR®

Office: 601.898.2772

Cell: 662.645.5151

[Anthony@TomSmithLand.com](mailto:Anthony@TomSmithLand.com)



Expect More. Get More.

**A Real Estate Expert You Can Trust**

[TomSmithLandandHomes.com](http://TomSmithLandandHomes.com)