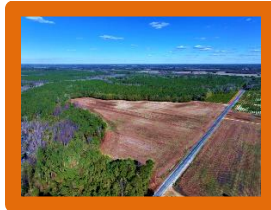




Stuarts Mill Road Farm



Location: Robeson County, Stuarts Mill Road and Highway 130, Fairmont, NC 28340 34.4744 -79.2435

Directions: From the intersection of I-95 and Highway 130 near Rowland, take Highway 130 for 3.72 miles. The farm is on the right. Alternately you can take Highway 130 for 4.1 miles to Stuarts Mill Road, turn right and drive .5 miles. The farm is on the right.

Distances: Dillon – 9 Miles Fairmont – 8 Miles Lumberton – 22 Miles Rowland – 5.5 Miles

Acreage: 189 +/- **Cleared:** 22 +/- **Wooded:** 167 +/- **Road Front:** 3,100' +/- on Stuarts Mill Road and 2,670' +/- on Highway 130

Wildlife: Deer, Turkey, Small Game

Timber: Longleaf and loblolly pine

Parcel Number: Portion of 060101006

Zoning: RA - Residential Agricultural

Possible Uses: Home Sites, Agriculture, Timber Investment, Recreational, Hunting, Horse Farm, Pine Straw

Description: Located on Stuarts Mill Road and Highway 130 between Fairmont and Rowland in Robeson County North Carolina, this farm is located in a quiet rural area close to the South Carolina state line. Electric, fiber optic, and telephone service are located adjacent to the property, and county water is available. There is substantial road frontage on Highway 130 and Stuarts Mill Road. Deer, turkeys, ducks, and small game can be hunted on the property. There is a 750 yard rifle range on the farm with a backstop. The 22+/- acres of cleared farmland offers yearly income from farm rent. The excellent stand of loblolly and longleaf pine on the farm offers immediate and future timber value. The longleaf stand is currently in pine straw production. The Lumber River is nearby for duck hunting, kayaking, canoeing, and excellent freshwater fishing for largemouth bass and panfish. The Lumber River is a nationally designated Wild and Scenic River. The primary soil types are Lynchburg, Norfolk, Wagram, Wakulla, and Bibb. Lumberton is the county seat and offers shopping, dining and a hospital. No deed restrictions, and no HOA! If you are looking for residential, recreational, agricultural, or timber land in southeastern NC take a look at this one!

For more information on this or other premier properties in North Carolina or South Carolina, contact Marty Lanier, ALC, Broker at (910) 617-4326, marty@rockcreeklandcompany.com, or visit our web site www.rockcreeklandcompany.com.

Offering Price: \$ 850,000