

# HUNTING CAMP - TALLAHALA WMA

9 ± Acres in Jasper County MS



\$92,500



Welcome to your hunting camp in Jasper County, MS! This 9± acre property is located within the Tallahala Wildlife Management Area, placing it adjacent to thousands of acres of public hunting land. The property supports abundant wildlife including deer, turkey, and wild hogs, making it ideal for hunters. Established food plots are already in place and ready to use. The camp house is approximately 700 square feet with two bedrooms, one-and-a-half baths, and a full kitchen. The camp is completely off-grid with generator power (generator not included but negotiable), rainwater catchment for washing and septic, and hauled water for cooking and drinking. Two barns are also included, measuring approximately 20x20 and 30x34.



**DALE WILDS**  
REALTOR®

O: 601.898.2772 | C: 662.715.7109  
Dale@TomSmithLand.com



Expect More. Get More.



**DAVID BELDEN**  
ALC®, REALTOR®

O: 601.898.2772 | C: 601.415.3884  
DBelden@TomSmithLand.com

**TomSmithLandandHomes.com**

Information is believed to be accurate but not guaranteed.







**DALE WILDS**  
REALTOR®

O: 601.898.2772 | C: 662.715.7109  
Dale@TomSmithLand.com



**DAVID BELDEN**  
ALC®, REALTOR®

O: 601.898.2772 | C: 601.415.3884  
DBelden@TomSmithLand.com

**TomSmithLandandHomes.com**

Information is believed to be accurate but not guaranteed.





# AERIAL MAP



[CLICK HERE FOR THE LANDID INTERACTIVE MAP](#)

**DALE WILDS**  
REALTOR®

O: 601.898.2772 | C: 662.715.7109  
Dale@TomSmithLand.com



**DAVID BELDEN**  
ALC®, REALTOR®

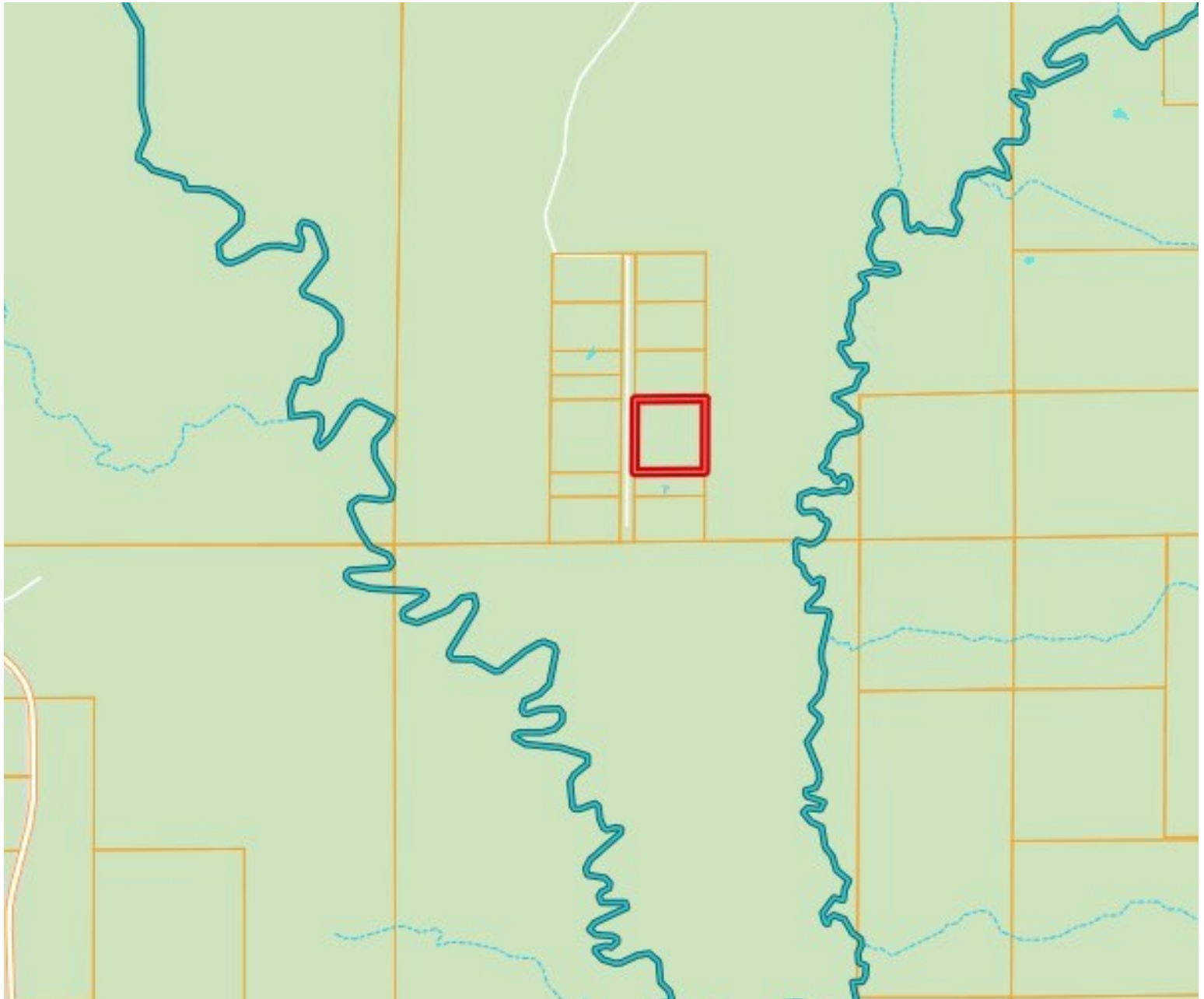
O: 601.898.2772 | C: 601.415.3884  
DBelden@TomSmithLand.com

**TomSmithLandandHomes.com**

Information is believed to be accurate but not guaranteed.



# OWNERSHIP MAP



**DALE WILDS**  
REALTOR®

O: 601.898.2772 | C: 662.715.7109  
Dale@TomSmithLand.com



**DAVID BELDEN**  
ALC®, REALTOR®

O: 601.898.2772 | C: 601.415.3884  
DBelden@TomSmithLand.com

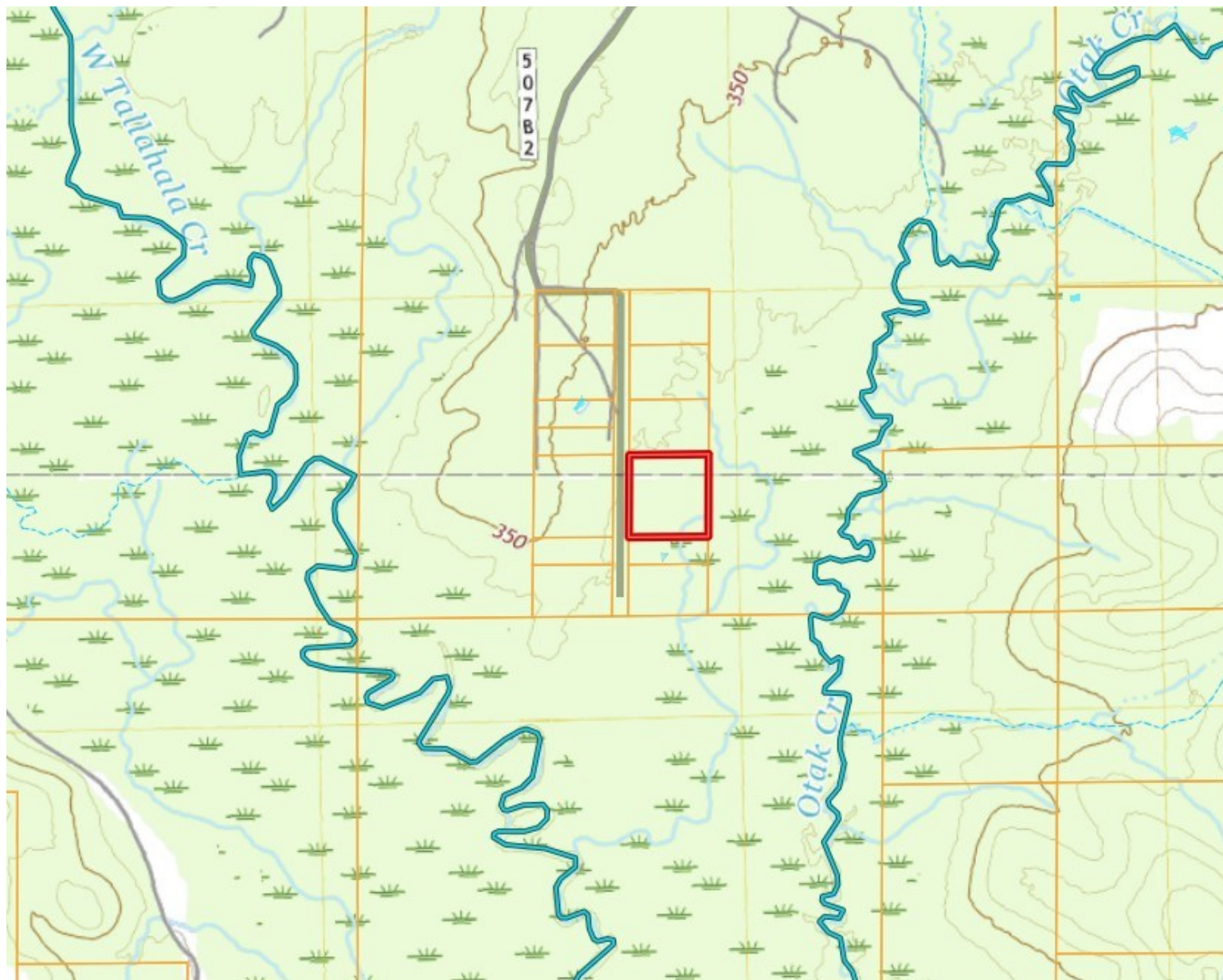
**TomSmithLandandHomes.com**

Information is believed to be accurate but not guaranteed.





# TOPO MAP



**DALE WILDS**  
REALTOR®

O: 601.898.2772 | C: 662.715.7109  
Dale@TomSmithLand.com



**DAVID BELDEN**  
ALC®, REALTOR®

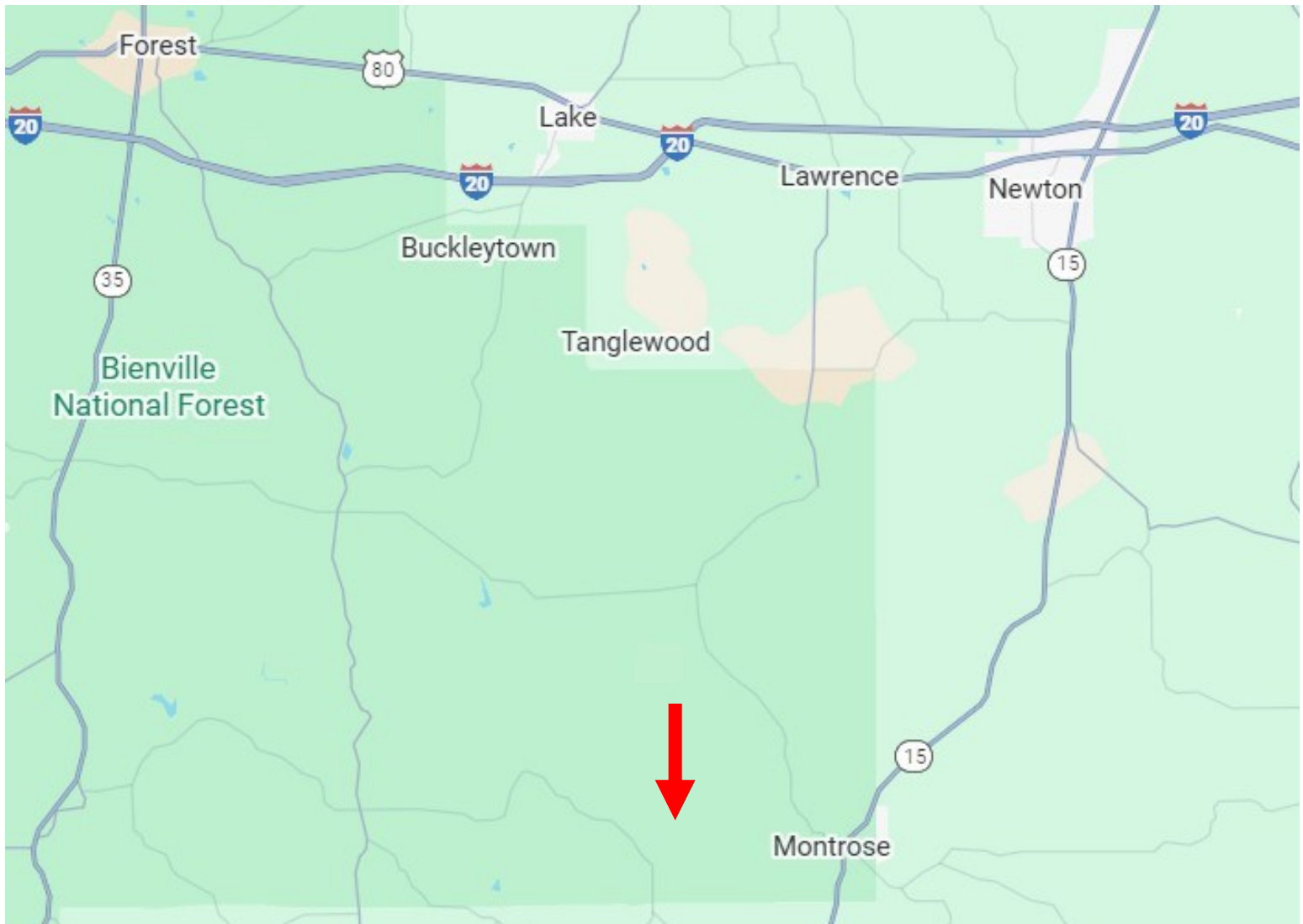
O: 601.898.2772 | C: 601.415.3884  
DBelden@TomSmithLand.com

**TomSmithLandandHomes.com**

Information is believed to be accurate but not guaranteed.



# DIRECTIONAL MAP



Directions from Intersection of County Rd 23 and County Rd 2353 in Montrose, MS: Head west on Co Rd 2353 toward County Rd 23531 for 1.4 miles then continue onto County Rd 23535. After 2.1 miles the property will be on your left.

[GOOGLE MAP LINK](#)



**DALE WILDS**  
REALTOR®

O: 601.898.2772 | C: 662.715.7109  
Dale@TomSmithLand.com

**DAVID BELDEN**  
ALC®, REALTOR®

O: 601.898.2772 | C: 601.415.3884  
DBelden@TomSmithLand.com

**TomSmithLandandHomes.com**

Information is believed to be accurate but not guaranteed.

