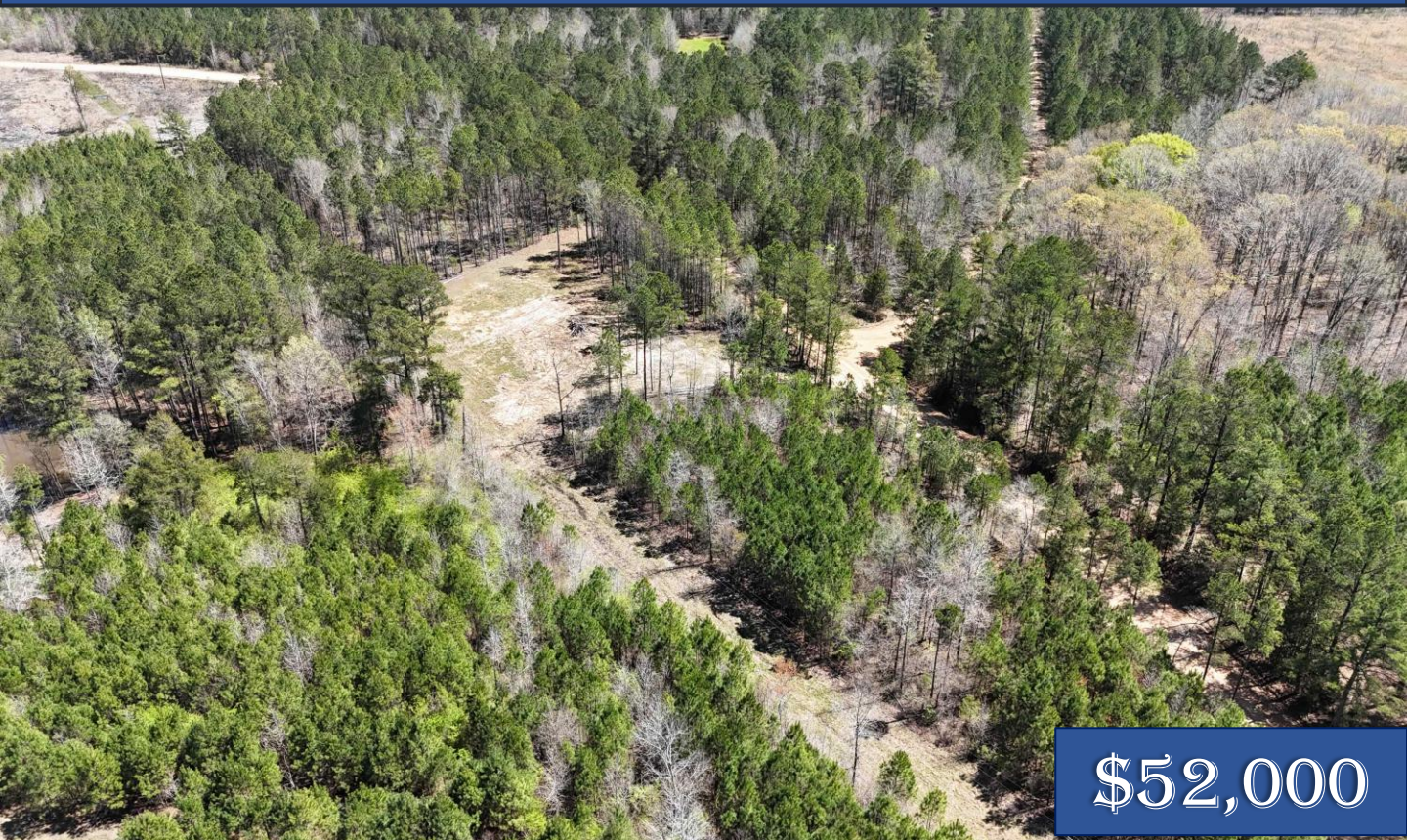


PRIME HOMESITE + RECREATIONAL POTENTIAL 20± ACRES IN CHOCTAW COUNTY, MS



\$52,000

This 20± acre property in Choctaw County offers the perfect setting for your future homesite. The land features a mix of open ground and timber, providing both privacy and space to build. Utilities are nearby, providing easy set up. Whether you're looking for a place to build or enjoy as a weekend retreat, this property has endless potential and room to grow. Contact Brooks for more details or to schedule a showing.



**BROOKS
MAGEE**

REALTOR®

Office: 662.268.6333

Cell: 601.613.4568

Brooks@TomSmithLand.com



Expect More. Get More.

A Real Estate Expert You Can Trust

TomSmithLandandHomes.com

Information is believed to be accurate but not guaranteed.





A Real Estate Expert *You Can Trust!*

BROOKS MAGEE
REALTOR®

O: 662.268.6333 C: 601.613.4568

Brooks@TomSmithLand.com

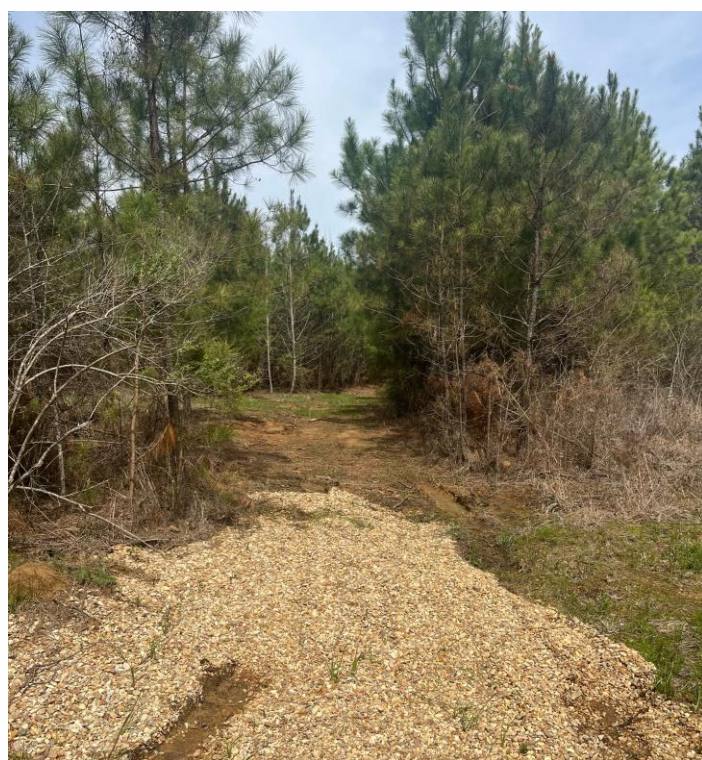
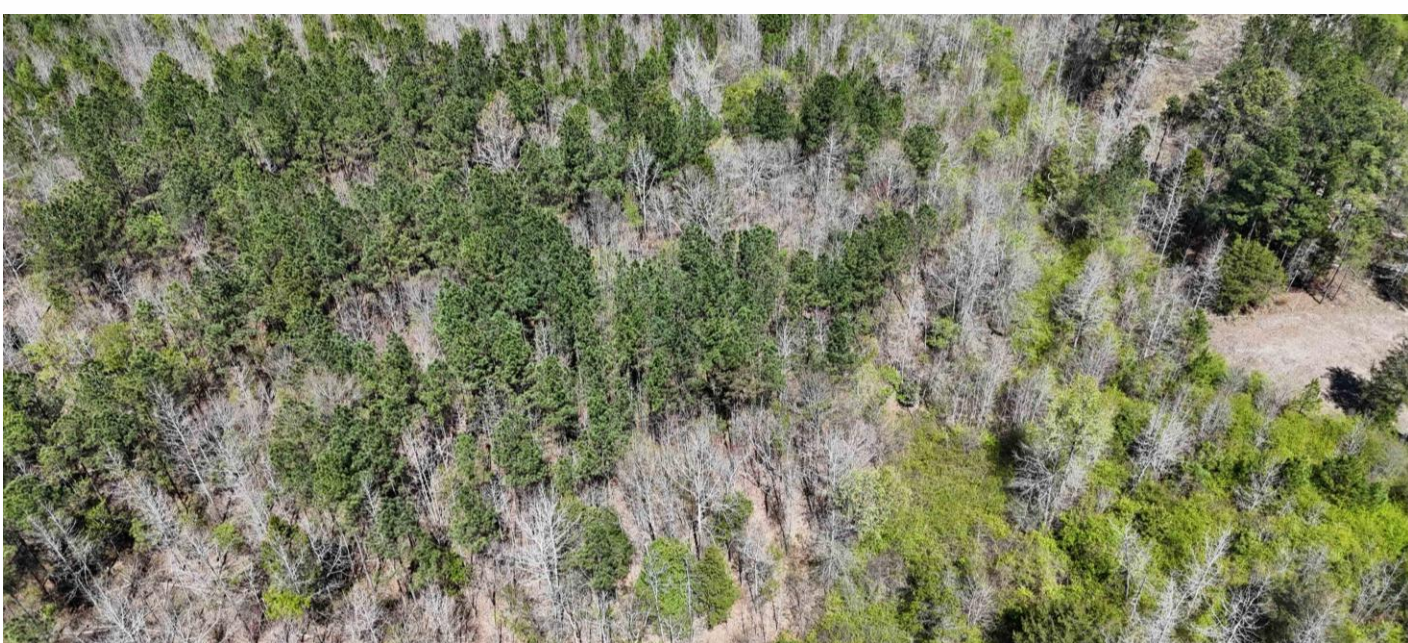
TomSmithLandandHomes.com



Expect More. Get More.



Information is believed to be accurate but not guaranteed.



A Real Estate Expert
You Can Trust!

BROOKS MAGEE
REALTOR®

O: 662.268.6333 C: 601.613.4568

Brooks@TomSmithLand.com

TomSmithLandandHomes.com

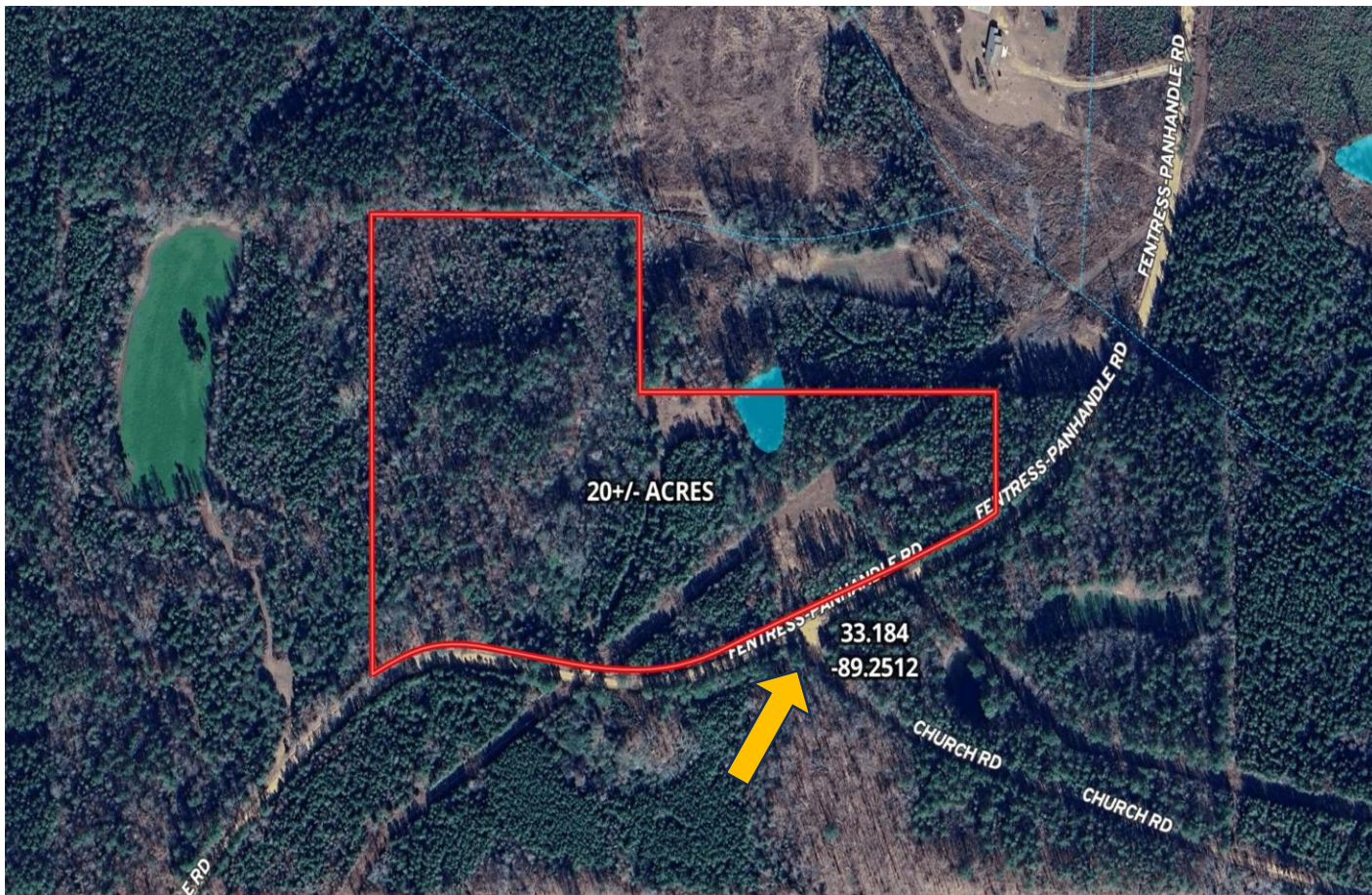


Expect More. Get More.



Information is believed to be accurate but not guaranteed.

AERIAL MAP



[Click for LandID Interactive Map](#)

A Real Estate Expert
You Can Trust!

BROOKS MAGEE
REALTOR®

O: 662.268.6333 C: 601.613.4568

Brooks@TomSmithLand.com

TomSmithLandandHomes.com

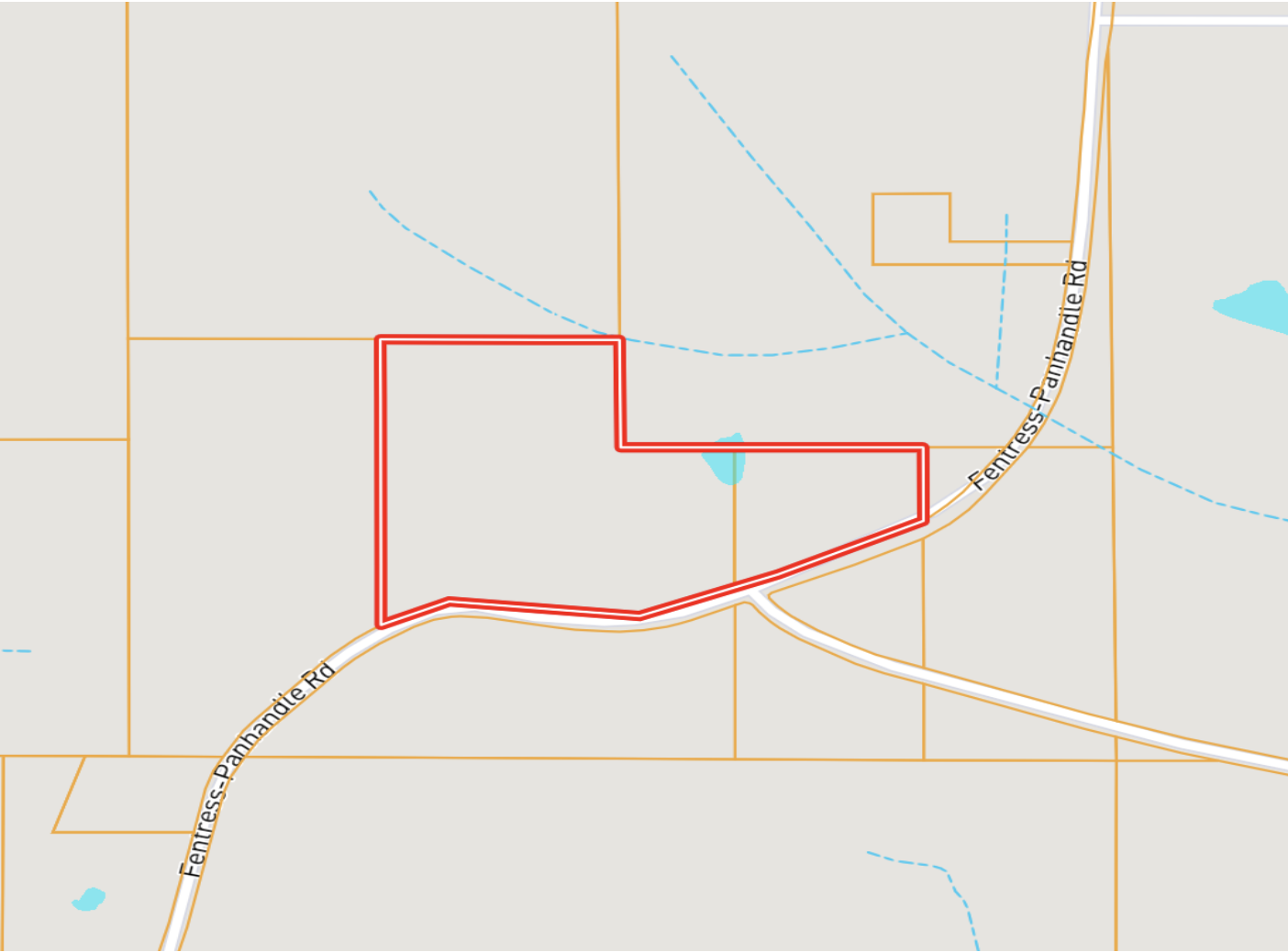


Expect More. Get More.



Information is believed to be accurate but not guaranteed.

OWNERSHIP MAP



A Real Estate Expert
You Can Trust!

BROOKS MAGEE
REALTOR®

O: 662.268.6333 C: 601.613.4568

Brooks@TomSmithLand.com

TomSmithLandandHomes.com

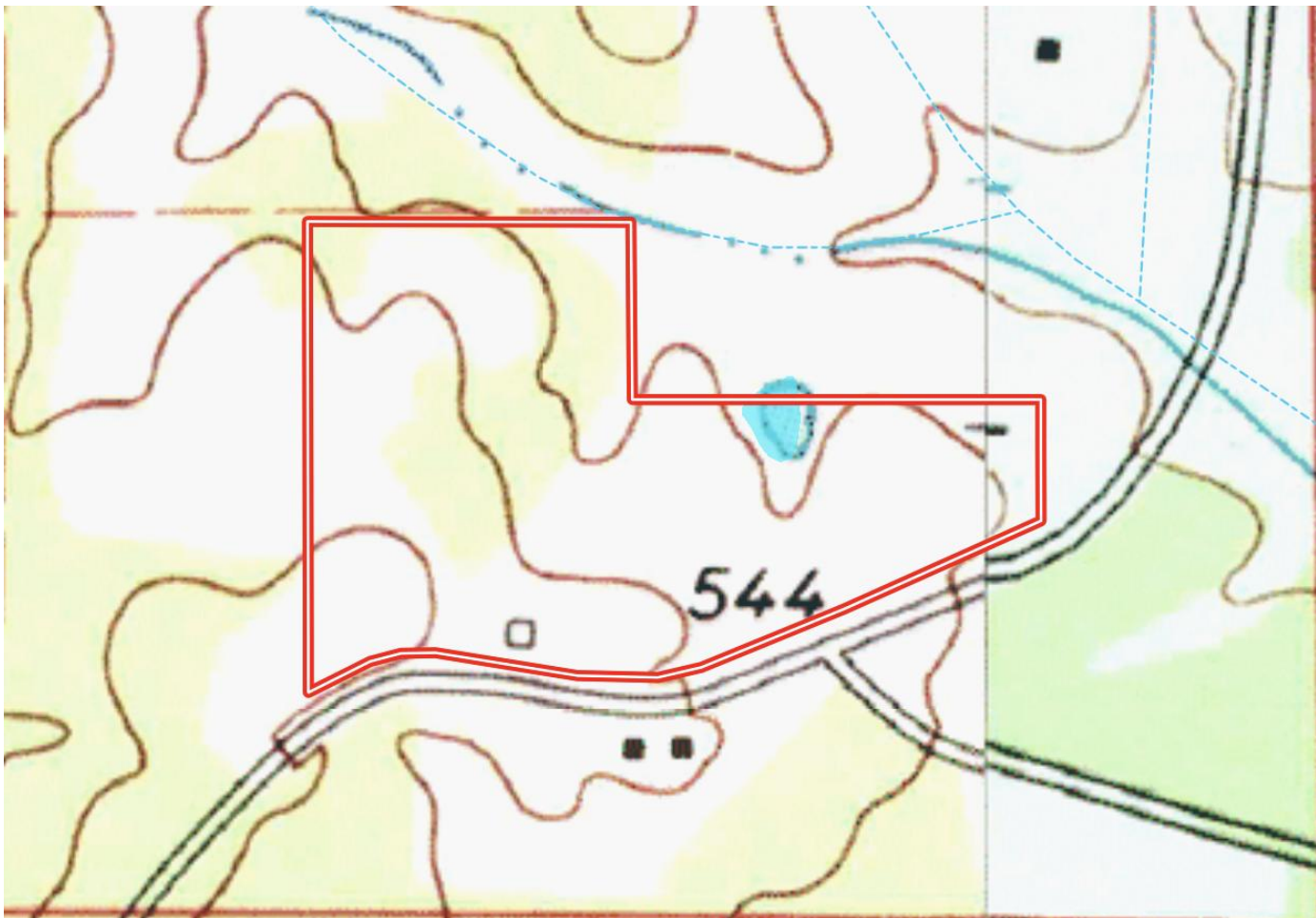


Expect More. Get More.



Information is believed to be accurate but not guaranteed.

TOPOGRAPHY MAP



A Real Estate Expert
You Can Trust!

BROOKS MAGEE
REALTOR®

O: 662.268.6333 C: 601.613.4568

Brooks@TomSmithLand.com

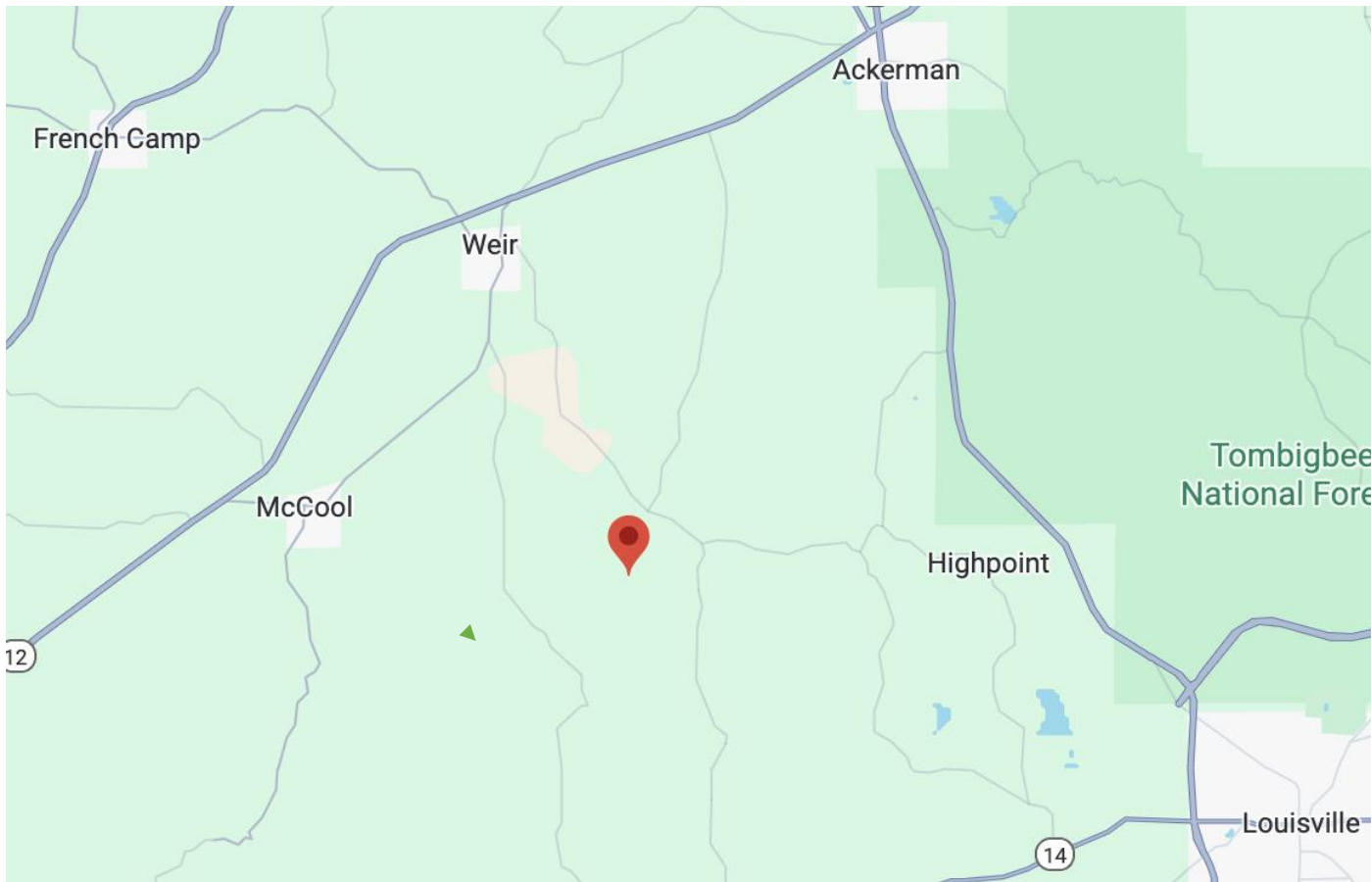
TomSmithLandandHomes.com



Expect More. Get More.



DIRECTIONAL MAP



[Click Here for Google Map](#)

Directions from MS-12 in Ackerman, MS: Head southwest on MS-12 W toward MS-9 N for 3.4 miles, Turn left onto Fentress-Panhandle Rd for 6.9 miles, Turn left onto Weir-Highpoint Rd for 259 ft, and Turn right onto Fentress-Panhandle Rd Destination will be on the right.



**BROOKS
MAGEE**

REALTOR®

Office: 662.268.6333

Cell: 601.613.4568

Brooks@TomSmithLand.com



Expect More. Get More.

A Real Estate Expert You Can Trust

TomSmithLandandHomes.com

Information is believed to be accurate but not guaranteed.

