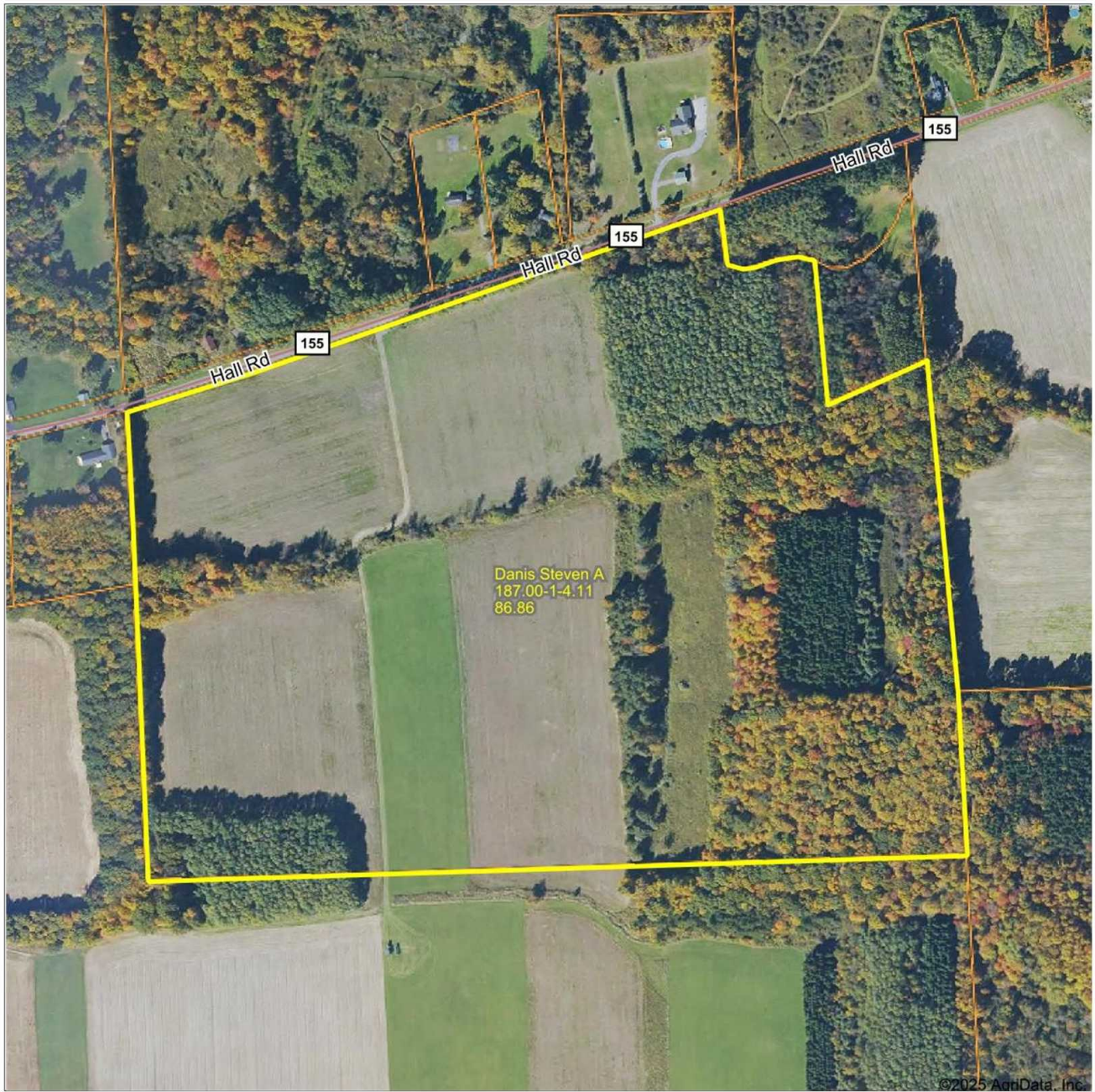


Aerial Map



©2025 AgriData, Inc.

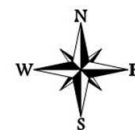


Maps Provided By:
surety
 CUSTOMIZED ONLINE MAPPING
 © AgriData, Inc. 2023 www.AgriDataInc.com

Boundary Center: 42.767484, -76.445246

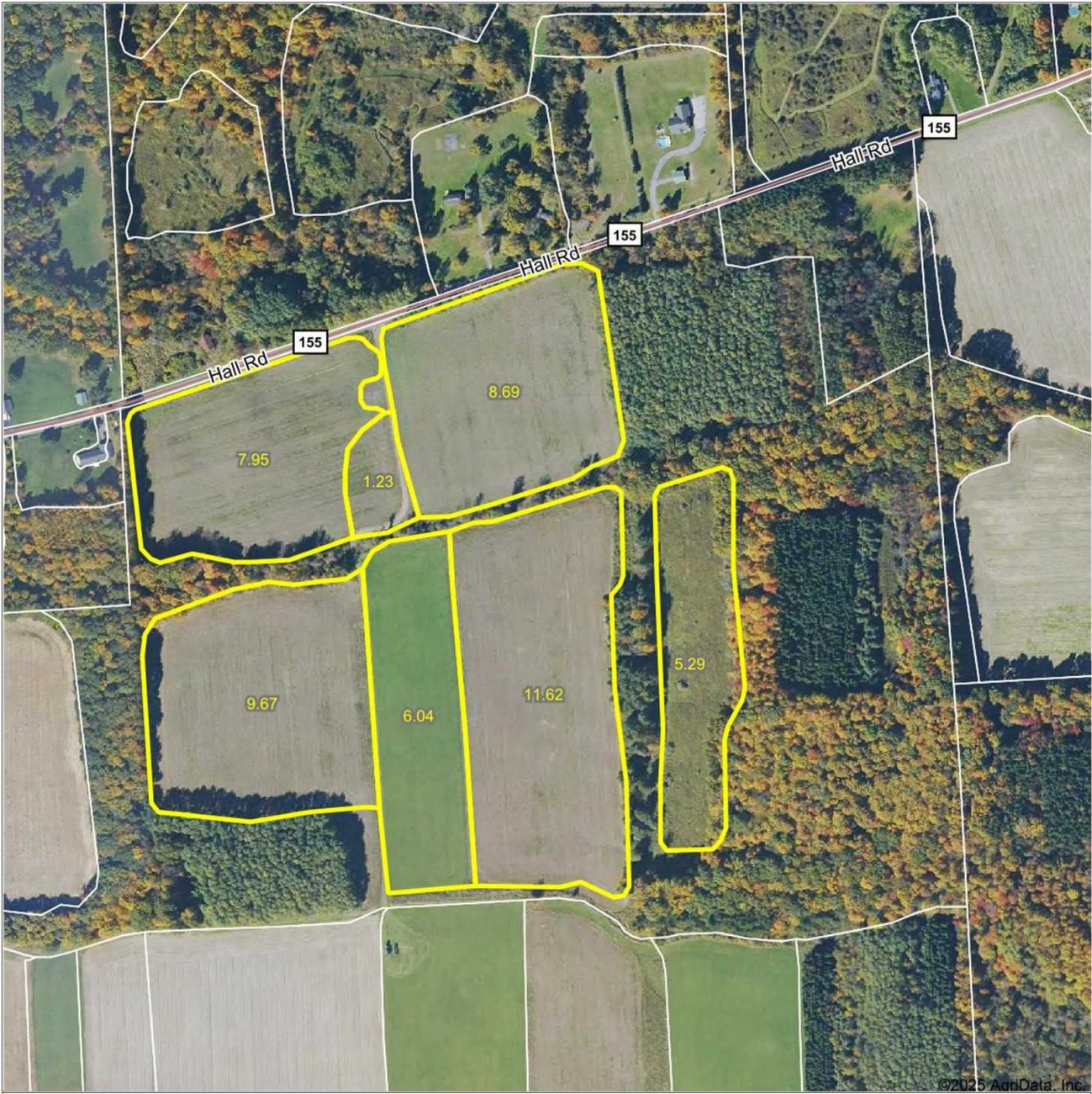
**Cayuga County
 New York**

0ft 451ft 902ft




2/20/2025


Aerial Map



©2025 AgriData, Inc.



Maps Provided By:





© AgriData, Inc. 2023 www.AgriDataInc.com

Boundary Center: 42.767225, -76.446443

**Cayuga County
New York**

0ft 451ft 902ft

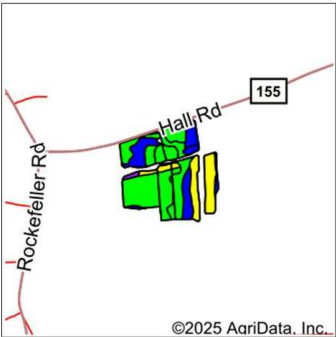
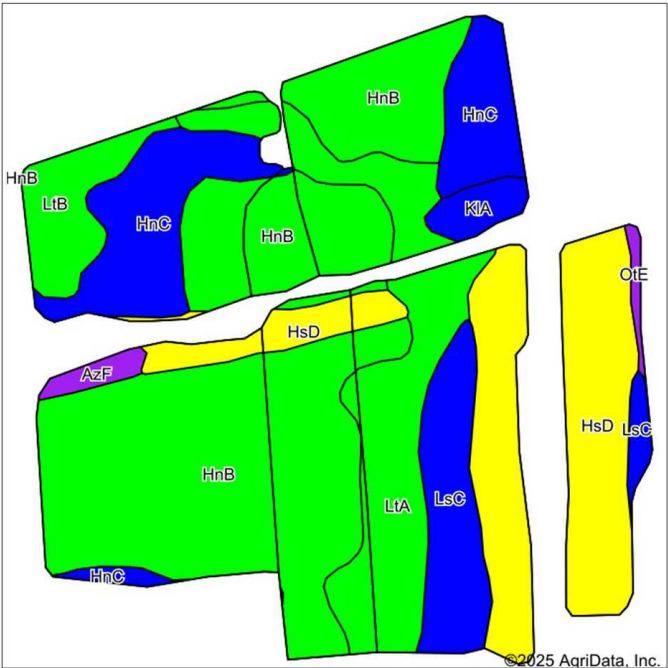


2/20/2025

Field borders provided by Farm Service Agency as of 5/21/2008.

Soil Map

Soils Map



State: **New York**
County: **Cayuga**
Location: **42.767225, -76.446443**
Township: **Moravia**
Acres: **50.49**
Date: **2/20/2025**



Soils data provided by USDA and NRCS.

Area Symbol: NY011, Soil Area Version: 21

Code	Soil Description	Acres	Percent of field	Non-Irr Class Legend	Water Table	Soil Drainage	Non-Irr Class *c	Alfalfa hay Tons	Corn Bu	Corn silage Tons	Grass hay Tons	Grass legume hay Tons	Oats Bu	Pasture AUM	Soybeans Bu	Winter barley Bu	Winter wheat Bu
HnB	Honeoye silt loam, 3 to 8 percent slopes	20.59	40.7%		> 6.5ft.	Well drained	Ile	6	136	23		5	89	9	36	45	49
HsD	Honeoye and Lansing soils, 14 to 20 percent slopes	9.72	19.3%		> 6.5ft.	Well drained	IVe	6	16	3		5	9	9	2	2	2
LtA	Lima silt loam, 0 to 3 percent slopes	7.08	14.0%		1.8ft.	Moderately well drained	IIlw	6	137	24		5	84	9	2	3	3
HnC	Honeoye silt loam, 8 to 15 percent slopes	6.00	11.9%		> 6.5ft.	Well drained	IIle	6	136	23		5	89	9	36	45	49
LsC	Lansing gravelly silt loam, 8 to 15 percent slopes	3.54	7.0%		> 6.5ft.	Well drained	IIle	6	126	21		5	92	9	38	47	53
LtB	Lima silt loam, 3 to 8 percent slopes	2.10	4.2%		1.8ft.	Moderately well drained	Ile	6	137	24		5	84	9	2	3	3

Soils data provided by USDA and NRCS.

Soil Map

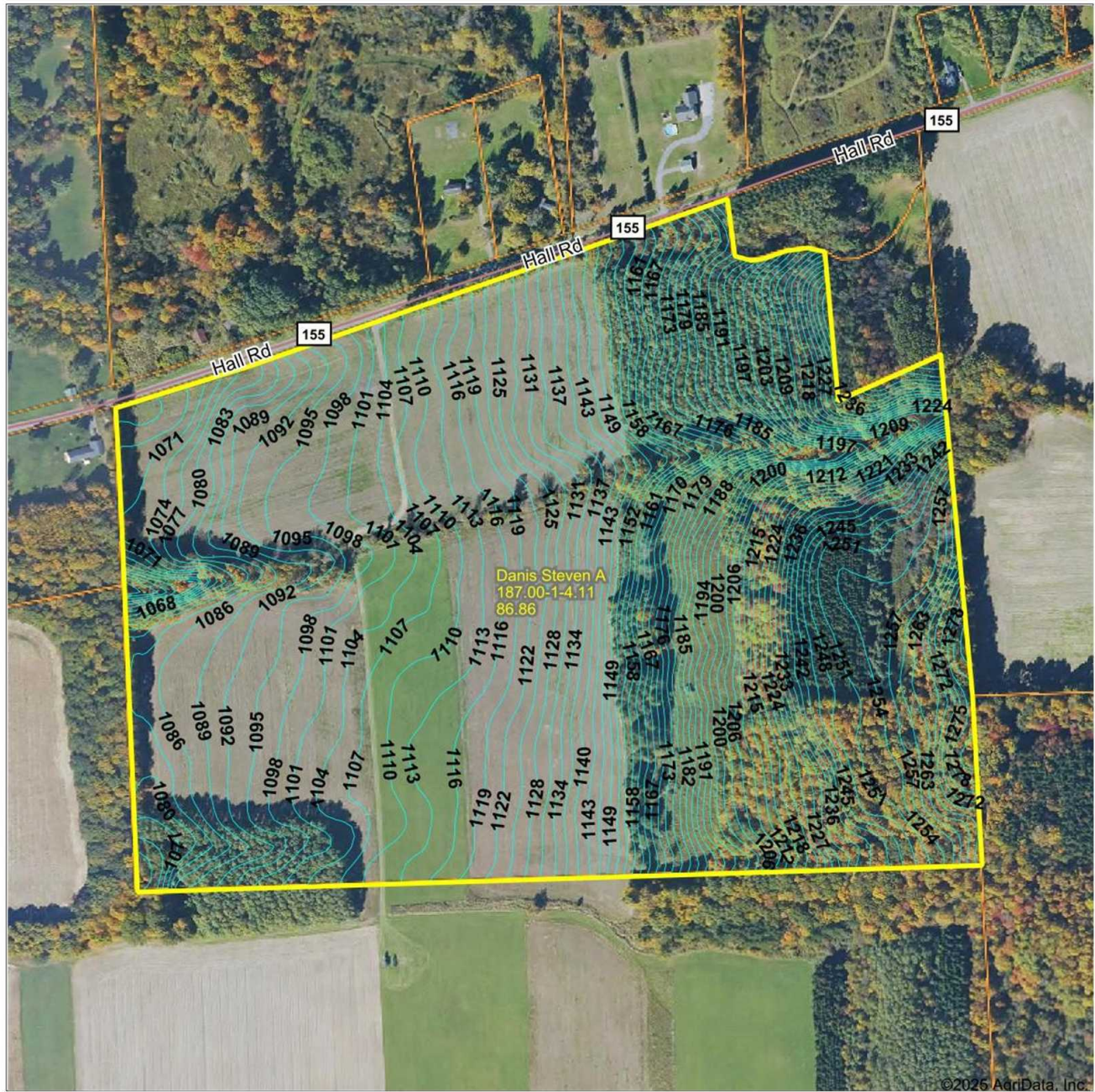
Maps Provided By:



Code	Soil Description	Acres	Percent of field	Non-Irr Class Legend	Water Table	Soil Drainage	Non-Irr Class *c	Alfalfa hay Tons	Corn Bu	Corn silage Tons	Grass hay Tons	Grass legume hay Tons	Oats Bu	Pasture AUM	Soybeans Bu	Winter barley Bu	Winter wheat Bu
KIA	Kendaia and Lyons soils, 0 to 3 percent slopes	0.77	1.5%		0.6ft.	Somewhat poorly drained	IIIw	3	71	19	4	3	7	6			
AzF	Aurora, Farmington, and Benson very rocky soils, 20 to 70 percent slopes	0.46	0.9%		1.8ft.	Moderately well drained	VIIc										
OIE	Ontario, Honeoye, and Lansing soils, 20 to 35 percent slopes	0.23	0.5%		> 6.5ft.	Well drained	VIe	3	60	10		2	45	8		4	4
Weighted Average								2.65	5.9	109.8	18.9	0.1	4.9	70.6	8.9	22.4	27.9
																	30.5

*n: The aggregation method is "Weighted Average using all components"
*c: Using Capabilities Class Dominant Condition Aggregation Method

Topography Contours



©2025 AgriData, Inc.



Maps Provided By:



© AgriData, Inc. 2023 www.AgrDataInc.com

Source: USGS 10 meter dem

Interval(ft): 3.0

Min: 1,046.2

Max: 1,283.6

Range: 237.4

Average: 1,151.7

Standard Deviation: 58.27 ft

0ft 438ft 875ft

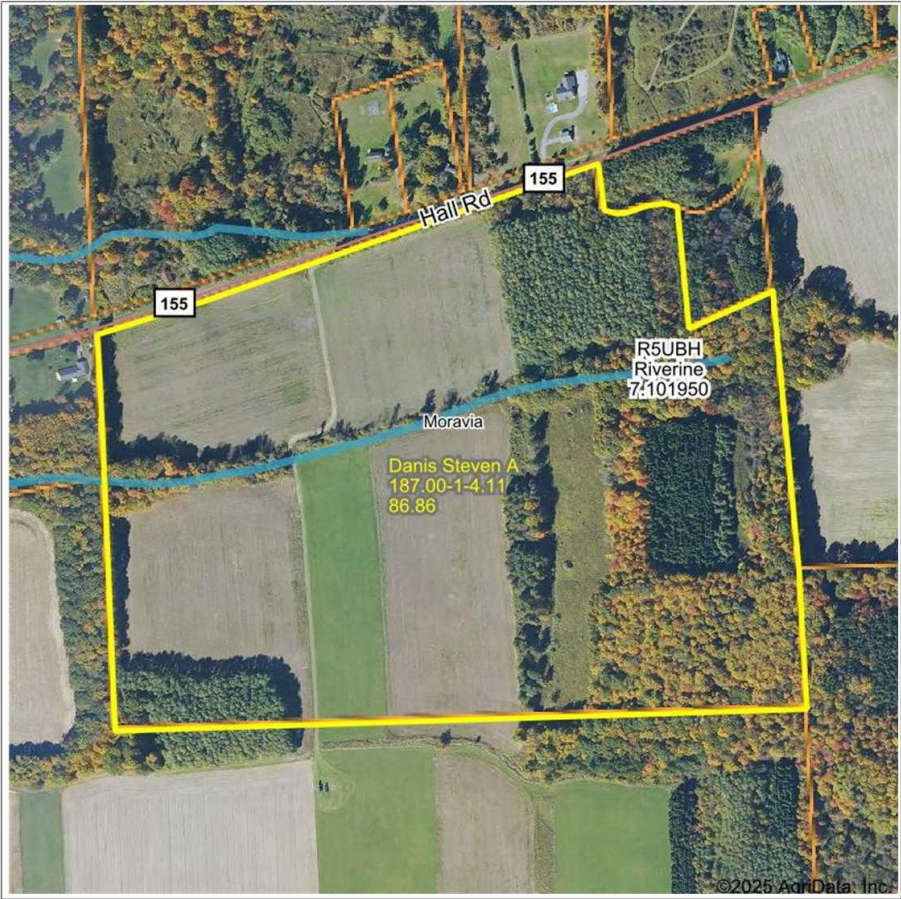


2/20/2025

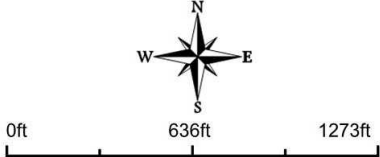
Cayuga County
New York

Boundary Center: 42.767484, -76.445246

Wetlands Map



State: **New York**
Location: **42.767484, -76.445246**
County: **Cayuga**
Township: **Moravia**
Date: **2/20/2025**



Classification Code	Type	Acres
R5UBH	Riverine	1.33
Total Acres		1.33

Data Source: National Wetlands Inventory website. U.S. Dol, Fish and Wildlife Service, Washington, D.C. <http://www.fws.gov/wetlands/>