



Sartain's Heritage
Properties, LLC.
www.sartainsheritage.com

Farm, Timber & Recreational Land Brokers

106 First Choice Dr Madison, MS 39110

www.SartainsHeritage.com

Property: Honey Island, located on the Humphreys and Holmes County line, offering approximately 208 acres of unencumbered hardwood. Surrounded by Tchula Lake, this secluded tract offers excellent development opportunities for deer and duck hunting. The topography gently rolls in ridge to swell manor across the tract. There are wetlands sloughs in the bottoms that with little effort could be improved for duck hunting. The age of the timber is mature, making for a beautiful, flooded timber style setting for duck hunting. The geographical location situates the property in strong waterfowl flyway and great deer genetics are widely known in the region. This property has never been developed and offers the chance for the next owner to improve the full recreational potential of the property.

Location: Sections 23,26,27, TWP15N, RNG2W, Holmes County Mississippi.

Timber Stand:

- 150 acres natural timber
- 60 acres of reforested hardwood +/-20-year stand

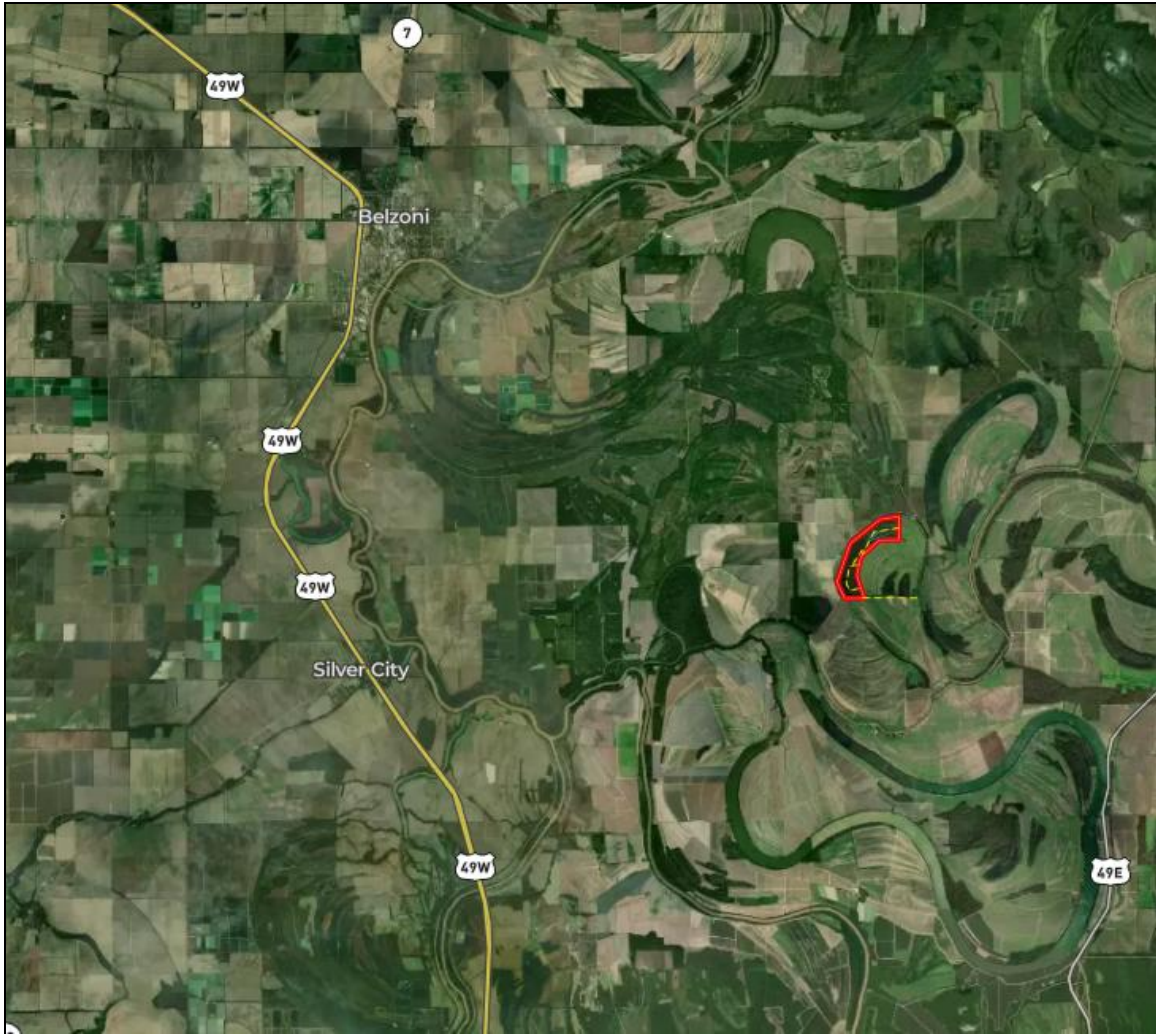
Price: \$832,000.00

Interactive Map: <https://id.land/maps/90c04872a00a60868e21bae256734749/share>

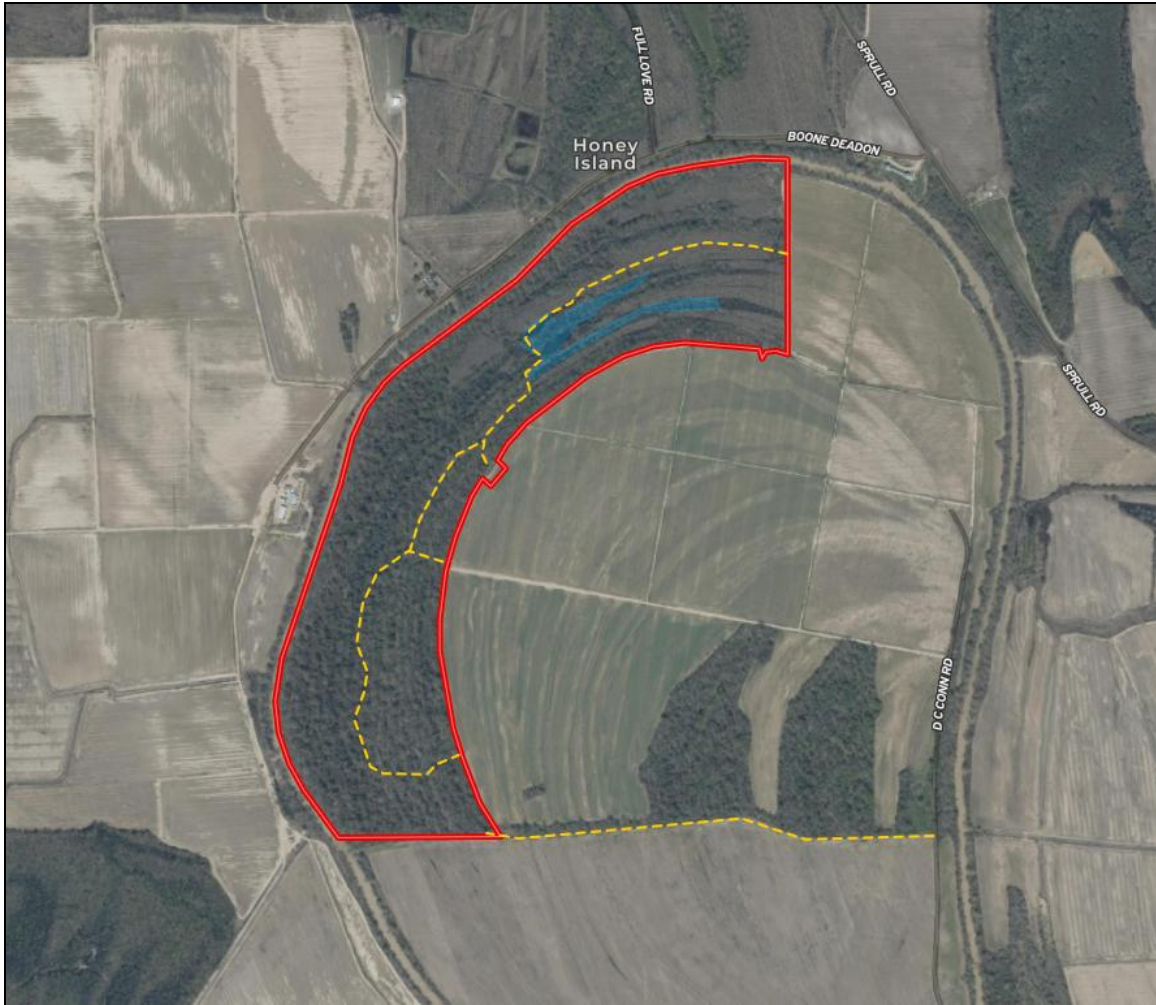
Property Video: <https://youtu.be/i6RvFA4omRg>

Contact: TJ Mallette 601-966-7932 or Tjmallette@sartainsheritage.com

OVERVIEW MAP



BOUNDARY MAP



TOPO MAP

