



**Fountains
Land**
AN F&W COMPANY




Oakhurst Plantation

A well-positioned timber and recreational tract with highway frontage, development potential, and proximity to Lake Livingston and the Sam Houston National Forest.

Oakhurst Plantation is a 276-acre historic company-owned timberland being offered to the public for the first time. The majority of the property contains young pine plantation, established in 2024. The seedlings were containerized elite loblolly from the IFCO nursery. The remaining acres are pine plantation established in 2003 and 2010, along with hardwoods in the SMZs throughout.

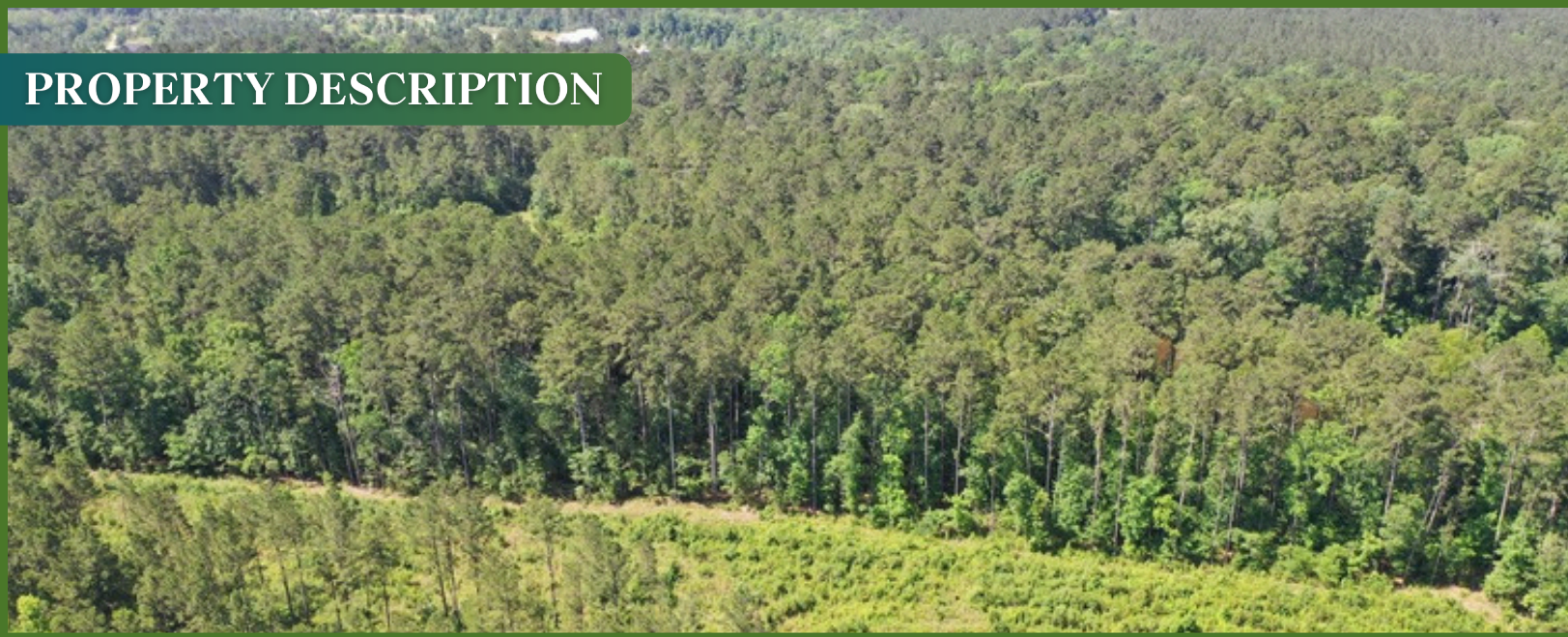
Property Highlights

-  \$2,346,754
-  +/- 276 Acres
-  Oakhurst, TX
-  Multiple Use



Chris Bartley, ACF, TAF | Texas Broker
(936) 662-2444 | cbartley@fwforestry.com
1204 Sam Houston Ave, STE 8 | Huntsville, TX 77340
www.fountainsland.com

PROPERTY DESCRIPTION



The Oakhurst Plantation offers a prime location along US Highway 190, conveniently positioned between Huntsville and Onalaska, Texas. Just minutes from the recreational waters of Lake Livingston to the east and the vast Sam Houston National Forest to the west, it provides both accessibility and proximity to some of the region's best outdoor destinations. With gentle rolling slopes and excellent drainage, this versatile timber and recreational tract holds strong potential as the next development opportunity in fast-growing San Jacinto County. Direct frontage along US Highway 190, a major corridor slated for widening and potential conversion into the future Interstate 14, further enhances accessibility and long-term growth prospects. Primarily stocked with a young pine plantation, the land offers flexibility for the future, whether managed as a long-term timber investment or cleared to accommodate development.



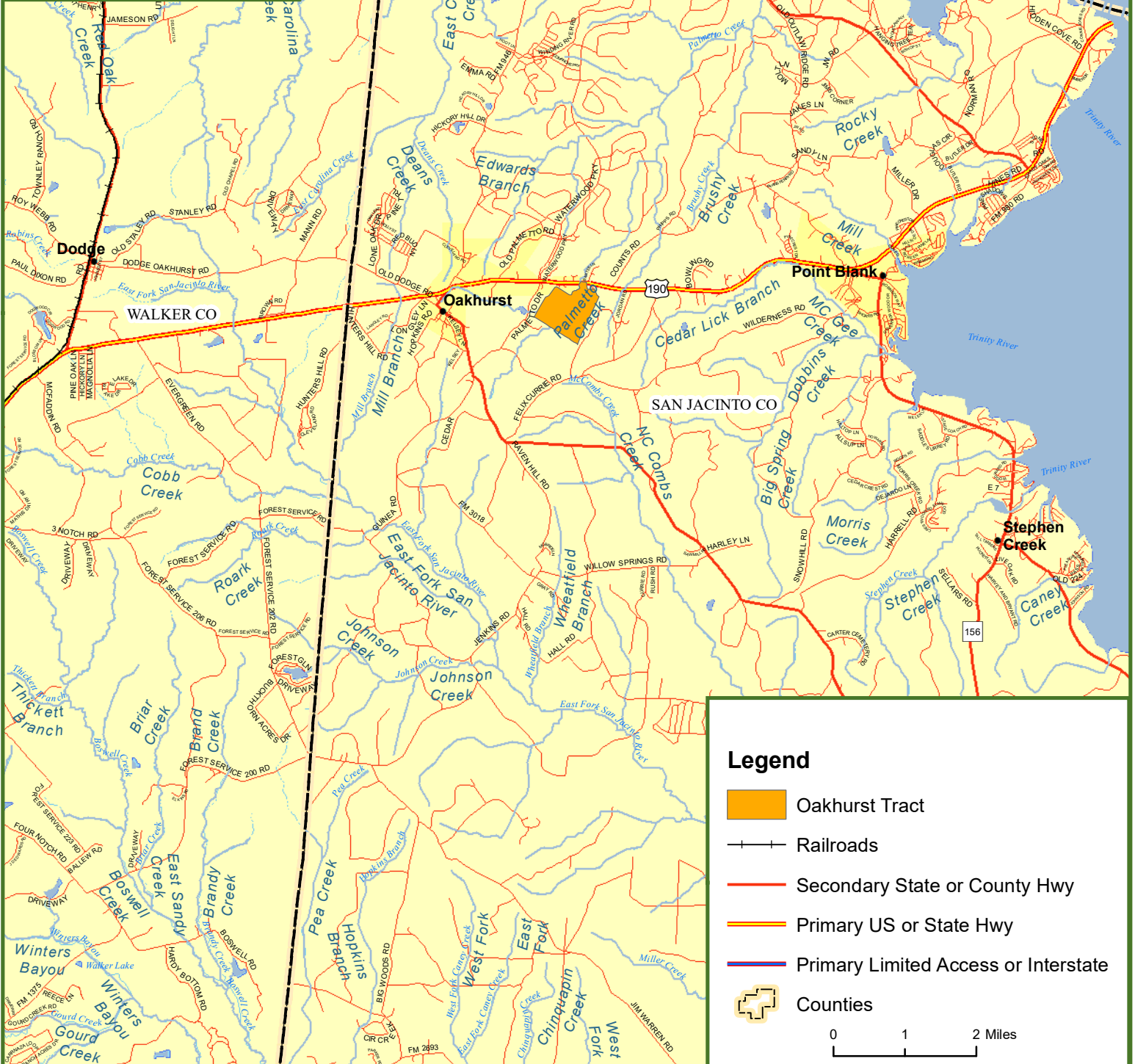
Fountains Land is the exclusive broker representing the seller's interest in the marketing, negotiating and sale of this property. Fountains Land has an ethical and legal obligation to show honesty and fairness to the buyer. The buyer may retain brokers to represent their interests. All measurements are given as a guide, and no liability can be accepted for any errors arising therefrom. No responsibility is taken for any other error, omission, or misstatement in these particulars, nor do they constitute an offer or a contract. We do not make or give, whether in these particulars, during negotiations or otherwise, any representation or warranty in relation to the property.



Locus Map Oakhurst Tract San Jacinto County, TX 276.00 ± Acres



**Fountains
Land**
AN F&W COMPANY

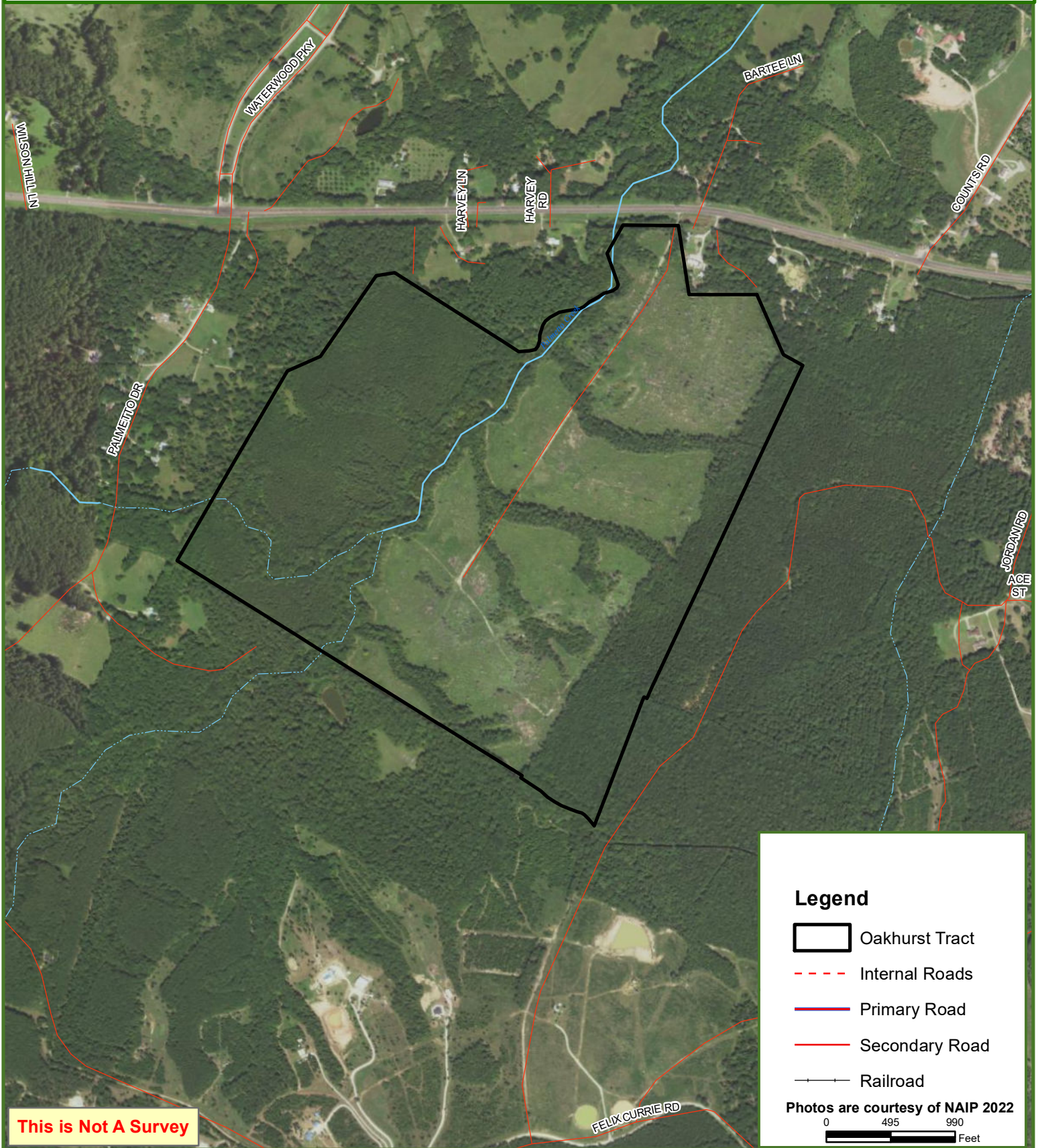




Oakhurst Tract

San Jacinto County, TX

276.00 ± Acres



This is Not A Survey

Legend

- Oakhurst Tract
- Internal Roads
- Primary Road
- Secondary Road
- Railroad

Photos are courtesy of NAIP 2022

0 495 990
Feet

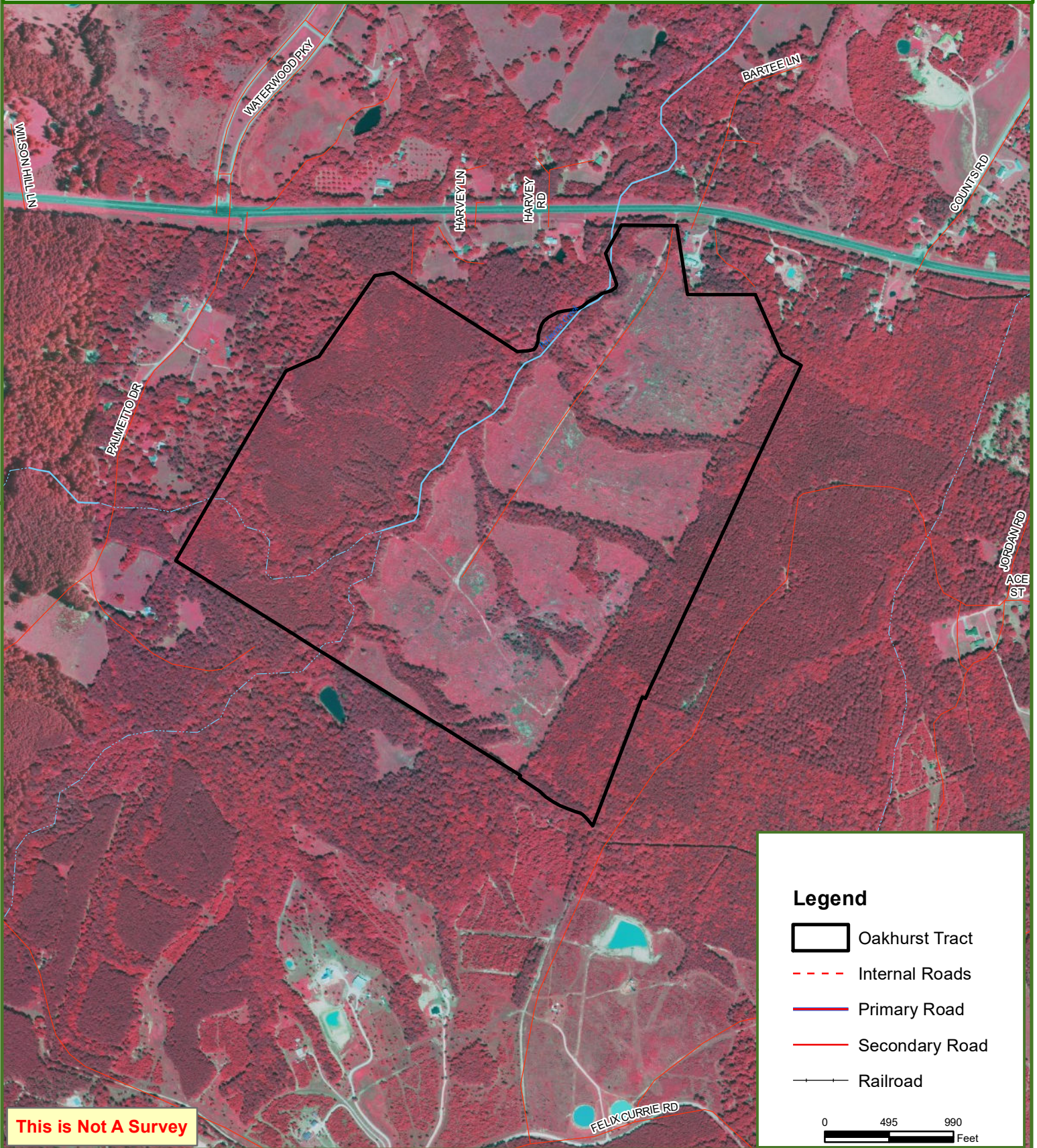
This map was produced from information supplied by the seller and the use of aerial photography. The boundary lines portrayed on this map are approximate and could be different than the actual location of the boundaries found in the field.



Oakhurst Tract

San Jacinto County, TX

276.00 ± Acres



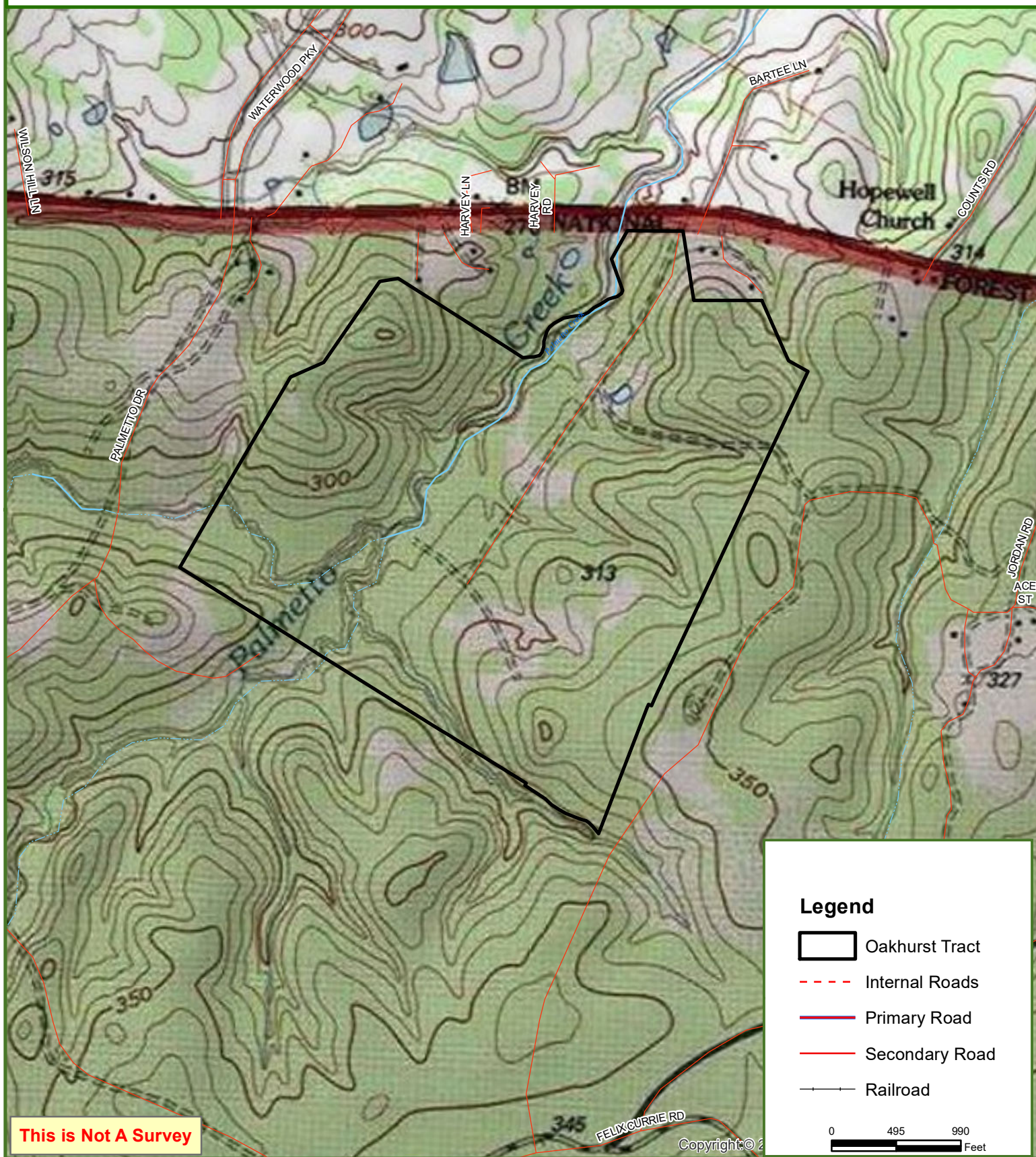
This map was produced from information supplied by the seller and the use of aerial photography. The boundary lines portrayed on this map are approximate and could be different than the actual location of the boundaries found in the field.



Oakhurst Tract

San Jacinto County, TX

276.00 ± Acres



This map was produced from information supplied by the seller and the use of aerial photography. The boundary lines portrayed on this map are approximate and could be different than the actual location of the boundaries found in the field.