



# 29± Acre Marion County Ranchette

Unassigned NW 190th Ave, Dunnellon, Florida 34432

Zane Mueller  
352-303-9322  
zane@saundersrealestate.com

Shea R. Booster  
541-771-1177  
shea@saundersrealestate.com



## PROPERTY OVERVIEW



### Sale Price

**\$551,000**

### Offering Summary

<b>Acreage:</b>	<b>29 Acres</b>
<b>Price / Acre:</b>	<b>\$19,000</b>
<b>State:</b>	Florida
<b>City:</b>	Dunnellon
<b>County:</b>	Marion
<b>Property Type:</b>	Equestrian, Farms, & Homestead

### Property Overview

Located in the rural Romeo community just outside Dunnellon, this 29± acre ranchette offers a versatile setup for equestrian, cattle, or agricultural use. Zoned A-1, the property features dual road frontage on both US Highway 41 and SE 190th Avenue, providing excellent access and multiple options for development.

The land consists of open pasture and natural timber and offers a mix of high, dry ground ideal for a homestead. Its location is just 20 minutes from the World Equestrian Center in Ocala and under 10 minutes to Dunnellon, providing a balance of seclusion and accessibility to major amenities and equine infrastructure.



## SPECIFICATIONS & FEATURES

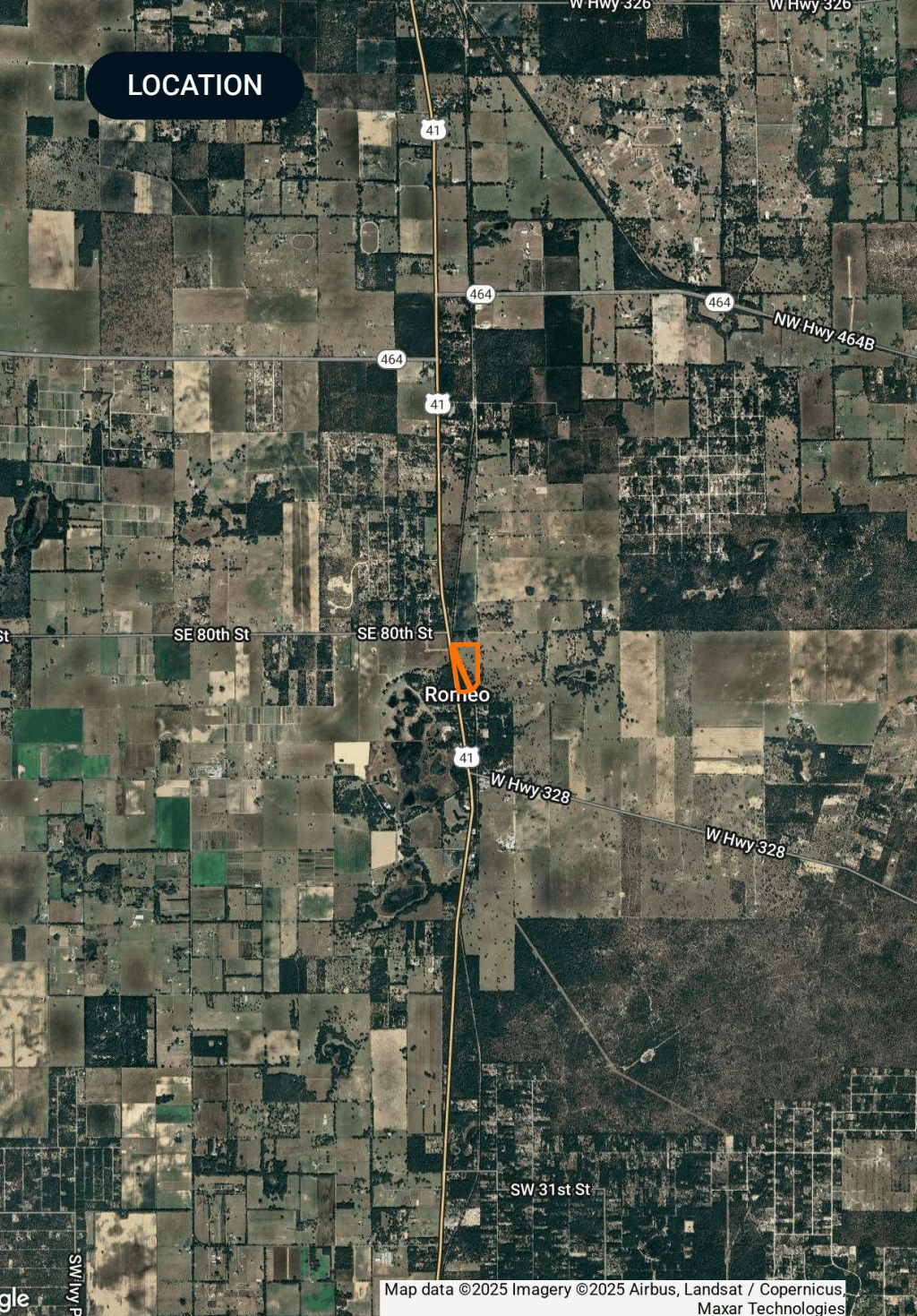


## Specifications & Features

Land Types:	<ul style="list-style-type: none"><li>• Equestrian</li><li>• Farms &amp; Nurseries Properties</li></ul>
Uplands / Wetlands:	100% Uplands
Soil Types:	Candler Sand Orlando Fine Sand
Taxes & Tax Year:	2024 - \$99.67
Zoning / FLU:	A-1/RL
Road Frontage:	US HWY 41 & NW 190th Ave
Nearest Point of Interest:	Dunnellon Ocala Gainesville Tampa
Fencing:	Perimeter Fencing
Current Use:	Vacant Land



## LOCATION



## Location & Driving Directions

Parcel: 17175-001-02 & 17175-000-00

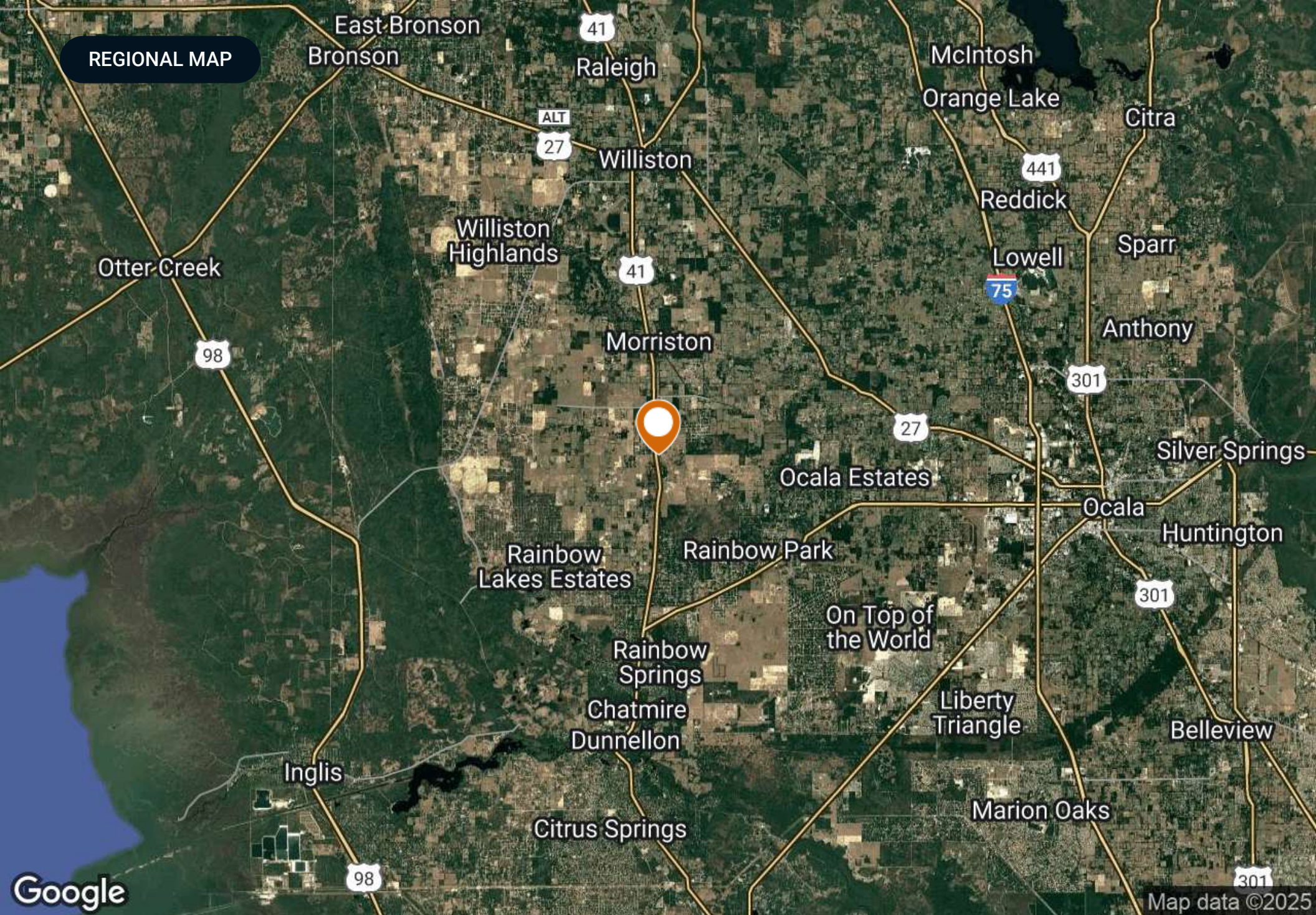
GPS: 29.212494, -82.438257

Driving  
Directions: Located on US HWY 41

Showing  
Instructions: Contact Shea Booster 541-771-1177  
or Zane Mueller 352-303-9322 to  
schedule a showing

Map data ©2025 Imagery ©2025 Airbus, Landsat / Copernicus,  
Maxar Technologies





REGIONAL MAP

East Bronson  
Bronson

41  
Raleigh

McIntosh  
Orange Lake

Citra

ALT  
27

Williston

441

Reddick

Sparr

Lowell

75

Anthony

301

Otter Creek

98

Williston  
Highlands

41

Morriston

27

Ocala Estates

Silver Springs

Ocala

Huntington

301

Rainbow  
Lakes Estates

Rainbow Park

On Top of  
the World

Rainbow  
Springs

Chatmire  
Dunnellon

Liberty  
Triangle

Bellevue

Inglis

Marion Oaks

Citrus Springs

98

301

Map data ©2025

Google



ADDITIONAL PHOTOS







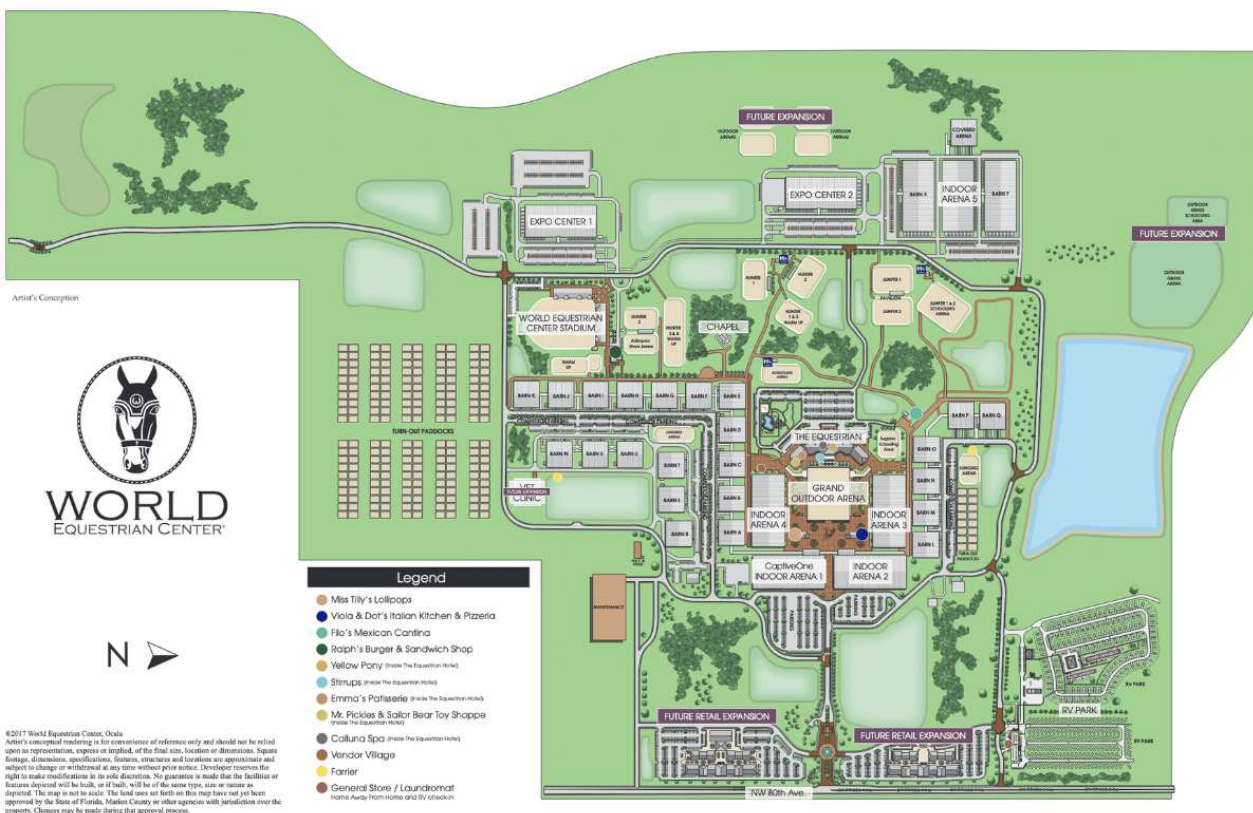
LOCATED LESS THAN 20  
MINUTES FROM THE LISTING



NEARBY POINTS OF INTEREST

# World Equestrian Center

Named one of TIME's 2024 World's Greatest Places, the World Equestrian Center is a premier destination for equestrian and multidisciplinary events, with venues in Ocala, Florida, and Wilmington, Ohio. Committed to excellence, the center provides an unparalleled experience for exhibitors, spectators, vendors, sponsors, and retailers. With a focus on quality, class, and distinction, it offers world-class facilities designed to support top-tier competition in a welcoming, family-friendly environment. Whether hosting elite equestrian events or diverse sporting and entertainment gatherings, the World Equestrian Center stands out as a leader in its field.





# On Top of the World

LOCATED LESS THAN 30  
MINUTES FROM THE LISTING



## NEARBY POINTS OF INTEREST

# On Top of the World Community



### Neighborhoods

- Candler Hills
- Indigo East
- Weybourne Landing
- Windsor
- Avalon
- Providence
- Williamsburg
- Friendship Colony
- Friendship Park
- Friendship Village
- Crescent Ridge
- Americana Village
- Crescent Green
- Renaissance Park
- Longleaf Ridge

### Circle Square Commons

- A The Ranch Fitness Center & Spa
- B Circle Square Cultural Center
- C The Town Square
- D On Top of the World
- E Real Estate of Marion, LLC
- F Bridget Communications
- G Master the Possibilities
- H Sid's Coffee Shop & Deli
- I Bay Laurel Center CDD
- J The World News
- K Accounting
- L Colen Built Design Studio

### Amenities

- Ⓜ Restricted Access
- Ⓜ Mailboxes
- ♻ Recycling
- ♻ Compactor/Garbage
- ♻ Cardboard
- Ⓜ Playground/Basketball
- Ⓜ Gate

On Top of the World is a premier 55+ active adult community located in Ocala, Florida, known for its resort-style amenities and vibrant lifestyle. Spanning thousands of acres, the community offers a variety of home styles, from single-family residences to maintenance-free villas, designed for comfortable and modern living. Residents enjoy an impressive range of amenities, including multiple golf courses, fitness centers, swimming pools, tennis and pickleball courts, and miles of walking and biking trails. The community also features numerous social clubs, lifelong learning programs, and entertainment options, fostering an engaging and active environment. Conveniently located near Ocala's shopping, dining, and medical facilities, On Top of the World provides a well-rounded, community-focused lifestyle.





9 MILES FROM THE LISTING



## NEARBY POINTS OF INTEREST

# HITS Post Time Farm

Spanning 500 acres in the heart of the Horse Capital of the World, HITS Post Time Farm in Ocala is one of the most expansive and horse-friendly showgrounds in the nation. Known for hosting USEF-rated hunter/jumper competitions each winter, the facility offers a world-class experience for equestrians and spectators alike. With modern barns, competition rings, and hospitality amenities, it's a seasonal home for riders from around the country. Just 16 miles from downtown Ocala and surrounded by Florida's natural beauty, it's more than a venue—it's an equestrian lifestyle hub.





For more information visit [www.saundersrealestate.com](http://www.saundersrealestate.com)

#### Headquarters

1723 Bartow Road  
Lakeland, FL 33801  
863.648.1528

#### Orlando

605 E Robinson Street  
Suite 410  
Orlando, FL 32801  
407.516.4300

#### North Florida

356 NW Lake City  
Avenue  
Lake City, FL 32055  
352.364.0070

#### Georgia

203 E Monroe Street  
Thomasville, GA 31792  
229.299.8600

#### Arkansas

112 W Center St, Suite  
501  
Fayetteville, AR 72701  
479.582.4113

