



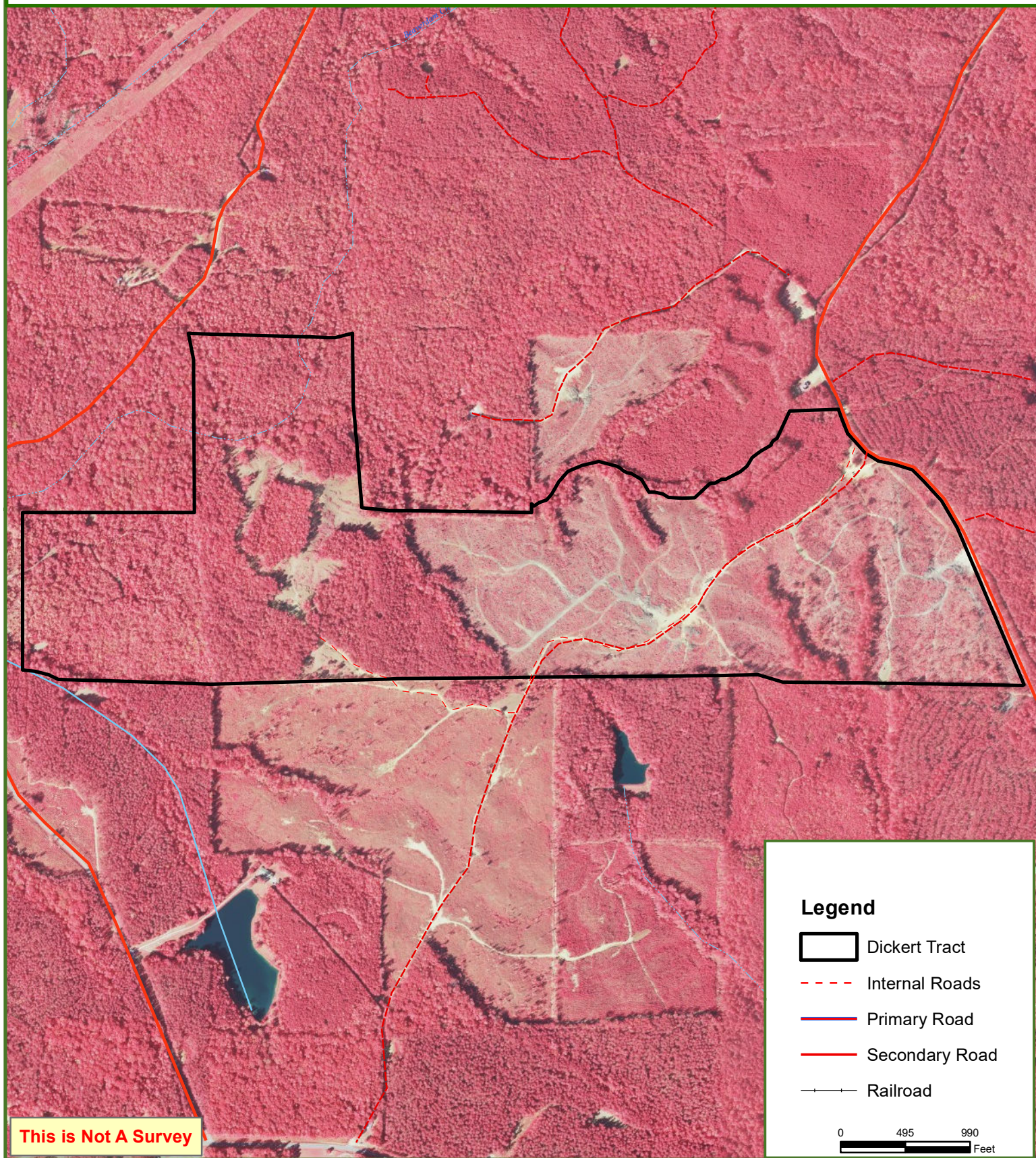
Dickert Tract

Randolph County, AL






280.00 ± Acres



**Fountains
Land**
AN F&W COMPANY



Legend

-  Dickert Tract
-  Internal Roads
-  Primary Road
-  Secondary Road
-  Railroad

0 495 990
Feet

This map was produced from information supplied by the seller and the use of aerial photography. The boundary lines portrayed on this map are approximate and could be different than the actual location of the boundaries found in the field.