

±69.5 ACRES LAND FOR SALE

Big Island Road, Rutherfordton, NC



PRICE REDUCED

\$382,250 or \$5,500/Acre

~~SALE PRICE: \$396,150.00 or \$5,700/Acre~~

VIEW SITE VIDEO



Beautiful and Manageable Property with Creek Frontage & Hunting Opportunities

Property Overview

- Rutherford County GIS #: 1305242
- Creek Frontage: ±2,034 feet
- Access: Easement off of Big Island Rd. / Misty Ln.

Property Location

- **Just 34 minutes** from downtown Spartanburg
- **1 hour** from Greenville
- **1 hour** from Asheville
- **1 hour 25 minutes** from Charlotte

Property Features

- **Trail System:** Extensive trail system throughout, which could serve as fire breaks
- **Water Source:** Gorgeous Mckinney Creek flows through the interior of the property
- **Timber:** Beautiful mix of mature hardwood draws and 10+ year old regenerative timber
- **Hunting:** Excellent property for deer and turkey hunting, with excellent deer numbers
- **Field:** Multiple small fields that could be cleaned up and serve as food plots



Gabe Blevins *Associate*

+1 828 400 2455

gblevins@naiearlefurman.com

Robbie Perkins, CCIM *Shareholder*

+1 336 358 3219

rperkins@naipt.com

No Warranty Or Representation, Express Or Implied, Is Made As To The Accuracy Of The Information Contained Herein, And The Same Is Submitted Subject To Errors, Omissions, Change Of Price, Rental Or Other Conditions, Prior Sale, Lease Or Financing, Or Withdrawal Without Notice, And Of Any Special Listing Conditions Imposed By Our Principals No Warranties Or Representations Are Made As To The Condition Of The Property Or Any Hazards Contained Therein Are Any To Be Implied.

The Timber and Recreational Land Division of NAI Earle Furman

Property Description

Big Island Road, Rutherfordton, NC



Just beyond the NC/SC border and 15 minutes outside Forest City



This property offers the perfect combination of beauty and functionality.

Whether you're looking for manageable hunting land or a weekend retreat, this property is an excellent choice!



Gabe Blevins *Associate*
+1 828 400 2455
gblevins@naiearlefurman.com

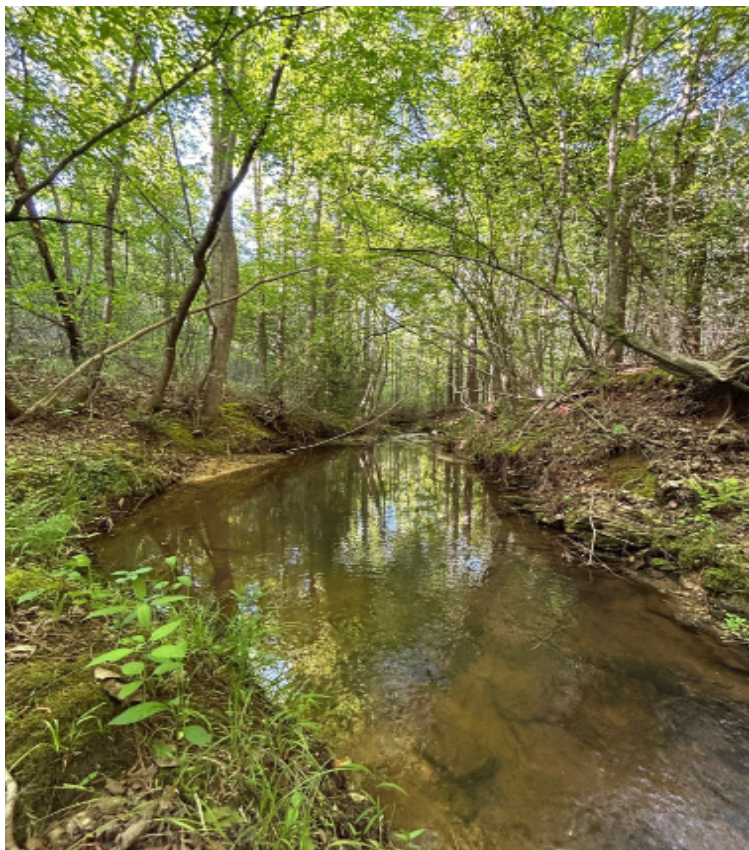
Robbie Perkins, *CCIM Shareholder*
+1 336 358 3219
rperkins@naipt.com

No Warranty Or Representation, Express Or Implied, Is Made As To The Accuracy Of The Information Contained Herein, And The Same Is Submitted Subject To Errors, Omissions, Change Of Price, Rental Or Other Conditions, Prior Sale, Lease Or Financing, Or Withdrawal Without Notice, And Of Any Special Listing Conditions Imposed By Our Principals No Warranties Or Rep- resentations Are Made As To The Condition Of The Property Or Any Hazards Contained Therein Are Any To Be Implied.

The Timber and Recreational Land Division of NAI Earle Furman

Property Photos

Big Island Road, Rutherfordton, NC



Gabe Blevins *Associate*

+1 828 400 2455

gblevins@naiearlefurman.com

Robbie Perkins, CCIM *Shareholder*

+1 336 358 3219

rperkins@naipt.com

No Warranty Or Representation, Express Or Implied, Is Made As To The Accuracy Of The Information Contained Herein, And The Same Is Submitted Subject To Errors, Omissions, Change Of Price, Rental Or Other Conditions, Prior Sale, Lease Or Financing, Or Withdrawal Without Notice, And Of Any Special Listing Conditions Imposed By Our Principals No Warranties Or Representations Are Made As To The Condition Of The Property Or Any Hazards Contained Therein Are Any To Be Implied.

The Timber and Recreational Land Division of NAI Earle Furman

Property Photos

Big Island Road, Rutherfordton, NC



Gabe Blevins *Associate*

+1 828 400 2455

gblevins@naiearlefurman.com

Robbie Perkins, CCIM *Shareholder*

+1 336 358 3219

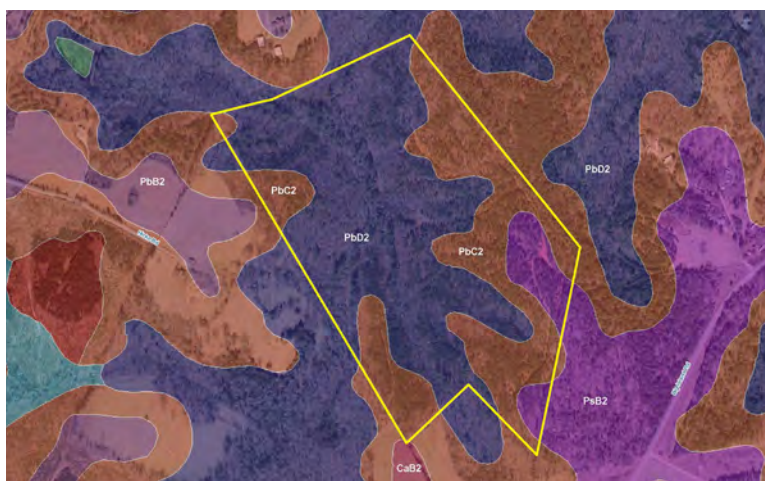
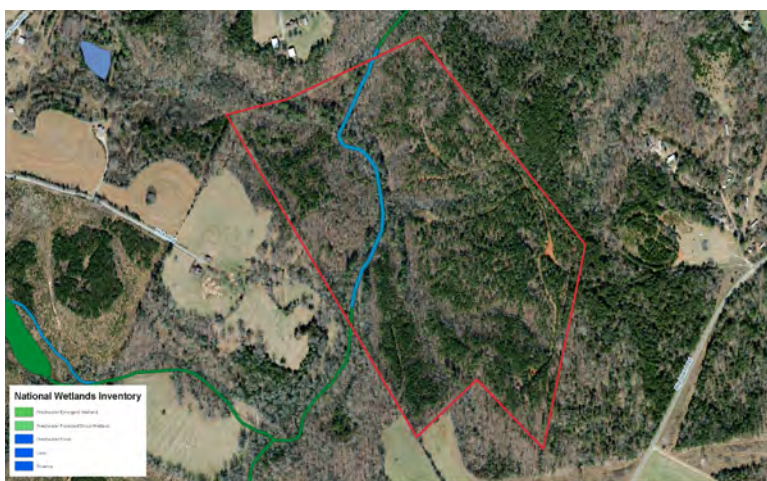
rperkins@naipt.com

No Warranty Or Representation, Express Or Implied, Is Made As To The Accuracy Of The Information Contained Herein, And The Same Is Submitted Subject To Errors, Omissions, Change Of Price, Rental Or Other Conditions, Prior Sale, Lease Or Financing, Or Withdrawal Without Notice, And Of Any Special Listing Conditions Imposed By Our Principals No Warranties Or Rep- resentations Are Made As To The Condition Of The Property Or Any Hazards Contained Therein Are Any To Be Implied.

The Timber and Recreational Land Division of NAI Earle Furman

Map Set

Big Island Road, Rutherfordton, NC



Gabe Blevins *Associate*

+1 828 400 2455

gblevins@naiearlefurman.com

Robbie Perkins, CCIM *Shareholder*

+1 336 358 3219

rperkins@naipt.com

No Warranty Or Representation, Express Or Implied, Is Made As To The Accuracy Of The Information Contained Herein, And The Same Is Submitted Subject To Errors, Omissions, Change Of Price, Rental Or Other Conditions, Prior Sale, Lease Or Financing, Or Withdrawal Without Notice, And Of Any Special Listing Conditions Imposed By Our Principals No Warranties Or Representations Are Made As To The Condition Of The Property Or Any Hazards Contained Therein Are Any To Be Implied.

The Timber and Recreational Land Division of NAI Earle Furman