



ELMORE COUNTY SOD FARM

950 Baltzer Rd, Wetumpka, AL 36092

David Lapham
517.990.4907
davidl@saundersrealestate.com

Troy Amos, RF
706.223.9324
troy@saundersrealestate.com

Angie Carter
angie@angiesoldquick.com



PROPERTY OVERVIEW



Sale Price

\$2,000,000

PROPERTY OVERVIEW

Established 28-acre sod operation with 18 acres of premium Emerald Zoysia and 10 acres of Bermuda in full production. This profitable farm includes a complete equipment package featuring a Firefly 155 harvester, forklift, and two Valley center pivots with modern remote-control systems. The property boasts reliable water access via a self-dug creek connected to an adjacent swamp that has maintained consistent water levels for 7+ years. Unique market position with limited local Emerald Zoysia competition and established direct-to-consumer business model. Ideal for experienced operators seeking immediate revenue generation or strategic expansion opportunity in Alabama's growing residential market.

OFFERING SUMMARY

Acreage:	60± Acres
Price / Acre:	\$33,333
City:	Wetumpka
County:	Elmore
Property Type:	Sod



SPECIFICATIONS & FEATURES



SPECIFICATIONS & FEATURES

Land Types:	Sod
Taxes & Tax Year:	2024 - \$167.30 2023 - \$184.32 2022 - \$188.30
Zoning / FLU:	810 - Agricultural Mixed
Road Frontage:	0.6 miles
Current Use:	Sod Farm
Grass Types:	Emerald Zoysia, Tifton bermuda

LOCATION



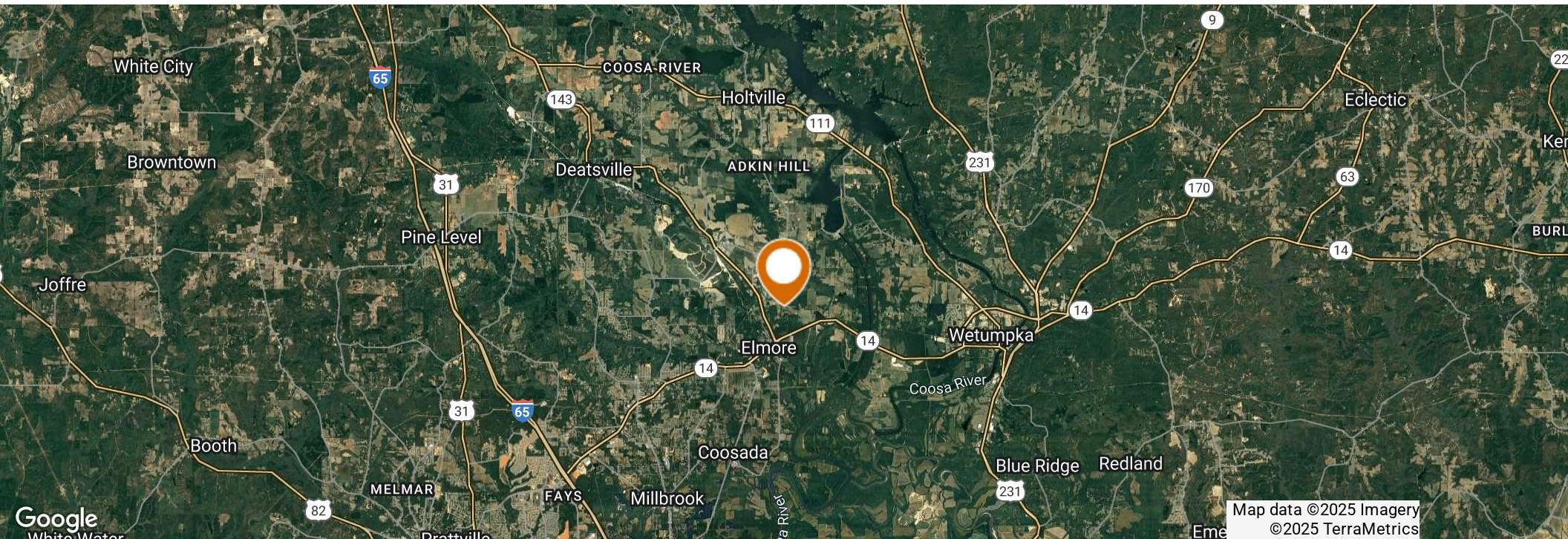
LOCATION & DRIVING DIRECTIONS

Parcel: 16-03-06-0-001-006000-0

GPS: 32.5680047, -86.3080674

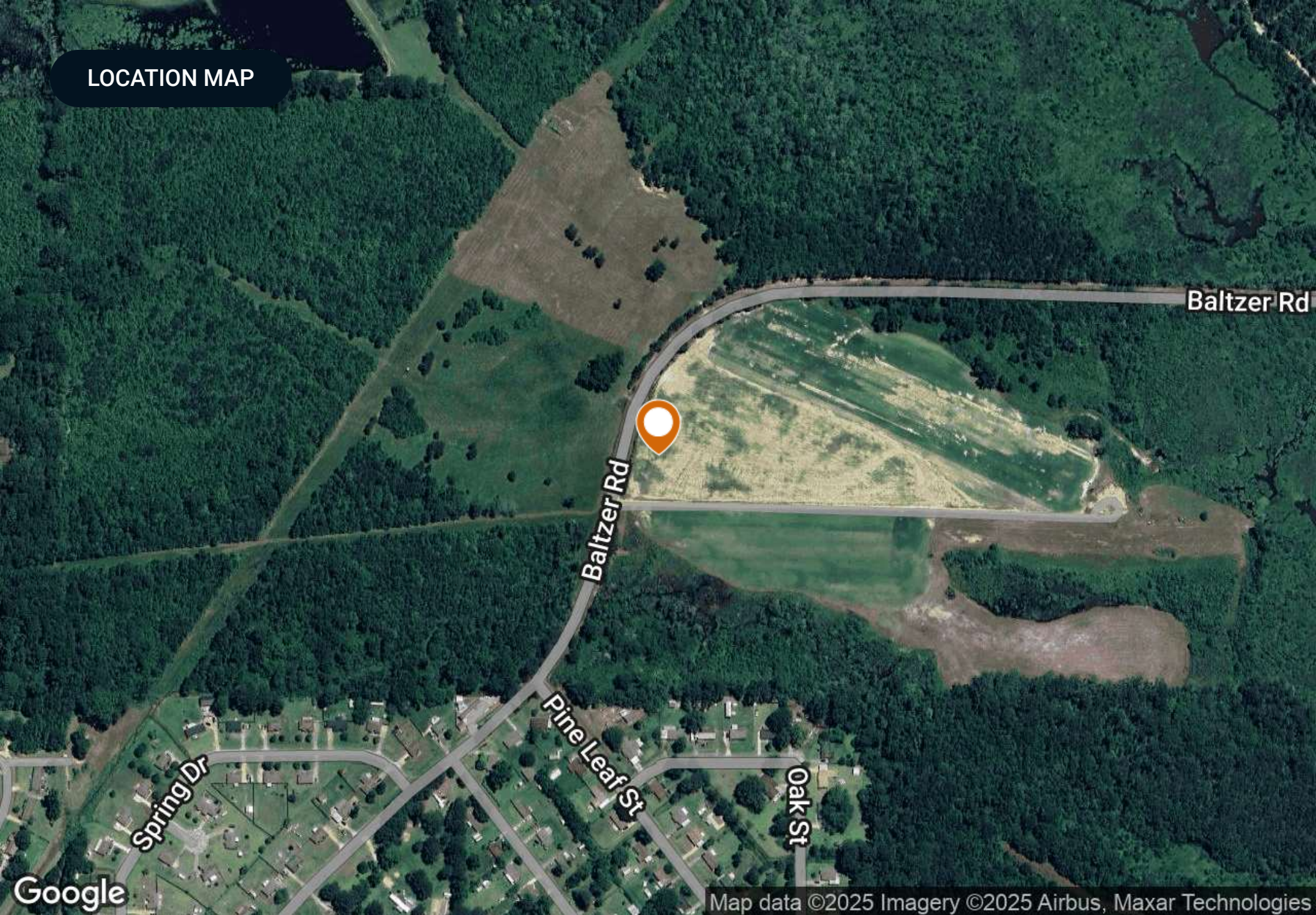
Driving
Directions:

Showing
Instructions: Contact David Lapham





LOCATION MAP



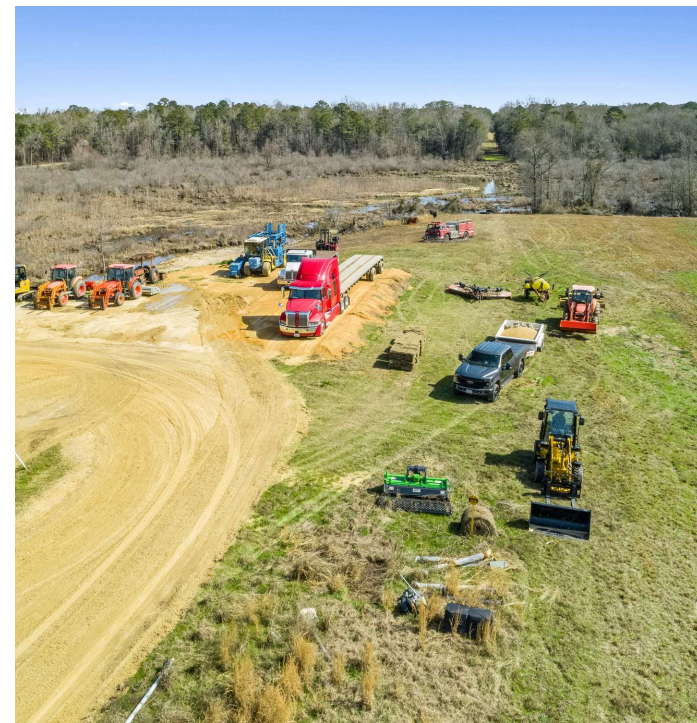
Google

Map data ©2025 Imagery ©2025 Airbus, Maxar Technologies

FARM



EQUIPMENT





For more information visit www.saundersrealestate.com

HEADQUARTERS

1723 Bartow Road
Lakeland, FL 33801
863.648.1528

ORLANDO

605 E Robinson Street
Suite 410
Orlando, FL 32801
407.516.4300

NORTH FLORIDA

356 NW Lake City Avenue
Lake City, FL 32055
352.364.0070

GEORGIA

203 E Monroe Street
Thomasville, GA 31792
229.299.8600

ARKANSAS

112 W Center St, Suite 501
Fayetteville, AR 72701
479.582.4113

RE/MAX Cornerstone
10406 US-231
Wetumpka, AL 36092
334.850.1955

