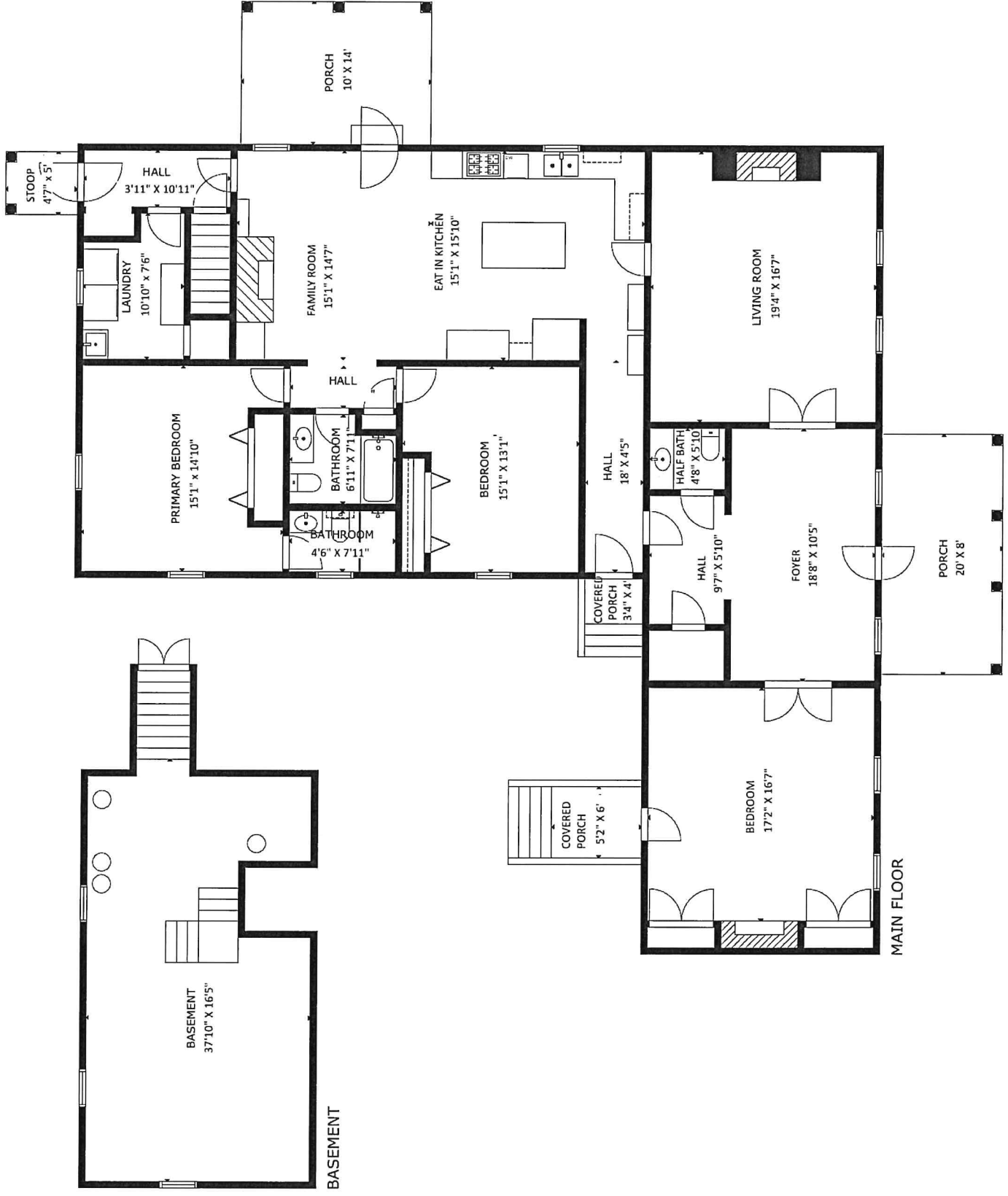


1834 Dewitt Smith Road Pittsboro, NC 27312



The following dimensions are approximate interior wall to wall dimensions, measured on site, from the widest portion of each room, then calculated to Feet/Inches from Rounded Decimal Feet. Information deemed reliable, but not guaranteed.

<b>Room Dimension Summary</b>	Address:	1834 Dewitt Smith Road	Pittsboro, NC	27312
	Prepared for	Eric Andrews	Measured by	Laura Fuelleman

The following dimensions are approximate interior wall to wall dimensions, measured from the widest portion of each room.

Exterior dimensions may be either are approximate innter or outer dimensions - tending to be less exact

Information deemed reliable, but not guaranteed.

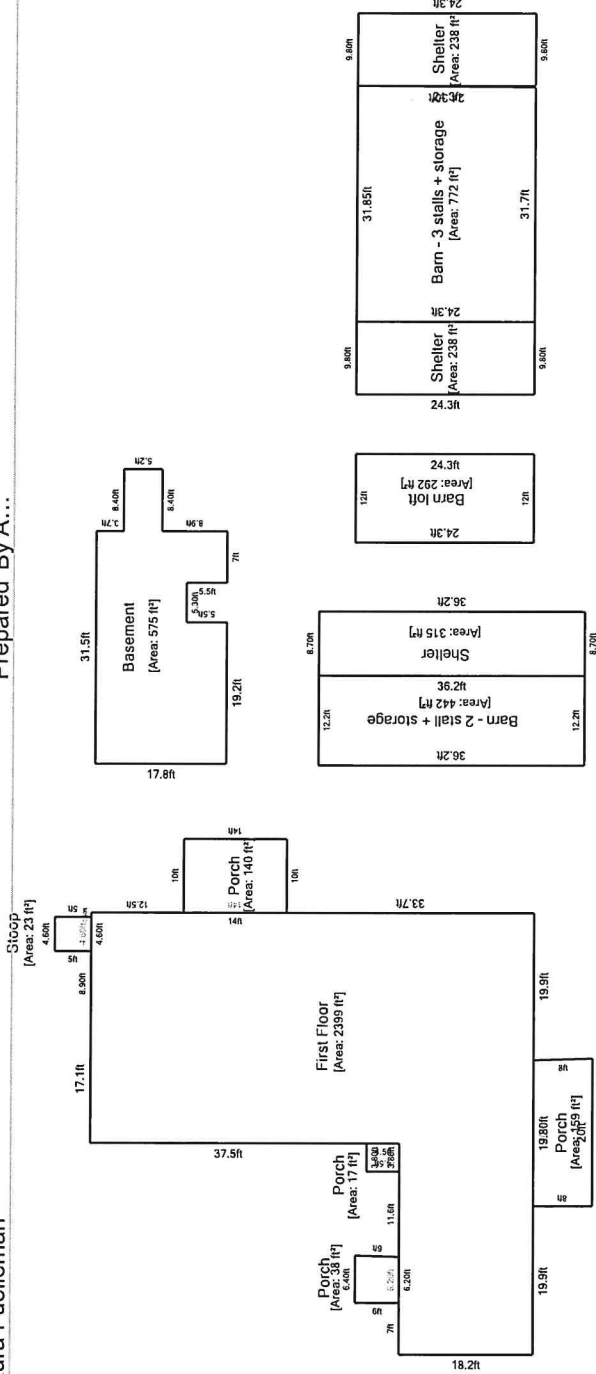
	Length in Feet - Parallel to Front Facade	Width in Feet - Perpendicular to Front Facade	Parallel to Front Facade			Perpendicular to Front Facade	
	Decimal Feet		Calculated Feet/Inches from Rounded Decimal Feet				
<b>Main Floor</b>							
Foyer	18.7	10.4	18 ft	8 in	by	10 ft	5 in
Living Room	19.3	16.6	19 ft	4 in	by	16 ft	7 in
Kitchen	15.1	15.8	15 ft	1 in	by	15 ft	10 in
Family Room	15.1	14.6	15 ft	1 in	by	14 ft	7 in
Hallway - Mid off Half Bath	9.6	5.8	9 ft	7 in	by	5 ft	10 in
Half Bathroom	4.7	5.8	4 ft	8 in	by	5 ft	10 in
Bedroom - Front	17.2	16.6	17 ft	2 in	by	16 ft	7 in
Hallway - To Courtyard	18	4.4	18 ft	0 in	by	4 ft	5 in
Primary Bedroom	15.1	14.8	15 ft	1 in	by	14 ft	10 in
Primary Bathroom	4.5	7.9	4 ft	6 in	by	7 ft	11 in
Bathroom - Hall	6.9	7.9	6 ft	11 in	by	7 ft	11 in
Bedroom	15.1	13.1	15 ft	1 in	by	13 ft	1 in
Hallway	3.9	10.9	3 ft	11 in	by	10 ft	11 in
Laundry Room	10.8	7.5	10 ft	10 in	by	7 ft	6 in
Front Porch	20	8	20 ft	0 in	by	8 ft	0 in
Front Bedroom Porch to Courtyard	5.2	6	5 ft	2 in	by	6 ft	0 in
Hall Porch to Courtyard	3.3	4	3 ft	4 in	by	4 ft	0 in
Back Stoop	4.6	5	4 ft	7 in	by	5 ft	0 in
Side Porch	10	14	10 ft	0 in	by	14 ft	0 in

<b>Lower Level</b>	Decimal Feet		Feet/Inches				
Basement	37.8	16.4	37 ft	10 in	by	16 ft	5 in

<b>Outbuidling</b>	Decimal Feet		Feet/Inches				
Barn with 3 stalls + Storage	31.6	24.3	31 ft	7 in	by	24 ft	4 in
Barn Loft	12	24.3	12 ft	0 in	by	24 ft	4 in
Barn with 2 stalls + storage	12.2	36.2	12 ft	2 in	by	36 ft	2 in

**Sketch**

Case Number: 20250228-1 File Number: 202502  
 Address: 1834 Dewitt Smith Road  
 City / State: Pittsboro / NC Zip / County: 27312 /  
 Borrower:  
 Lender or Client: Eric Andrews  
 Prepared By: Laura Fuelleman



26 ft

Living Area	
First Floor	2398.76 ft² Porch
	159.20 ft² Porch
	140 ft² Porch
	37.80 ft² Porch
	17.10 ft² Porch
	23 ft² Stoop
	575.23 ft² Basement
	441.64 ft² Barn - 2 stall + storage
	314.94 ft² Shelter
	291.60 ft² Barn loft
	238.14 ft² Shelter
	238.14 ft² Barn - 3 stalls + storage
	238.14 ft² Shelter
<b>Total Living Area (rounded):</b>	<b>2399 ft² Total Non-Living Area (rounded):</b>
	<b>3249 ft²</b>

This document is designed to be a record of total finished square feet to aid the listing agent in gathering the square feet facts of the property. Measurements are obtained by physical observation of the property by a certified Home Measurement Specialist. Within every measurement project, some degree of art of opinion may be applied as well as rounding as set forth in the standards. Final finished square footage will be rounded to the nearest whole number with the goal of being within a 5% margin of error. Information deemed reliable, but not guaranteed.

