

# Homosassa Islands

Gulf of Mexico, Homosassa, Florida

---

Mike Lansdell, ALC  
877-518-5263 x448  
912-409-0925  
[mikel@saundersrealestate.com](mailto:mikel@saundersrealestate.com)

Greg Driskell, ALC  
877-518-5263 x372  
386-867-2736  
[greg@saundersrealestate.com](mailto:greg@saundersrealestate.com)

Jeremiah Thompson, ALC  
877-518-5263 x386  
352-255-3670  
[jt@saundersrealestate.com](mailto:jt@saundersrealestate.com)



## PROPERTY OVERVIEW



### Offering Summary

Sale Price:	Contact For Pricing
Acreage:	408 Acres
City:	Homosassa
County:	Citrus
Property Type:	Waterfront, Hunting and Recreational Land
Video:	<a href="#">View Here</a>

### Property Overview

Homosassa Islands feature coastal hammock lands along the world-famous Homosassa River. Backcountry snook and redfish, world-class fly fishing for tarpon, crystal clear grass flats teeming with speckled trout and scallops, plus scaup, redheads, and other ducks - these islands are a paradise for the sportsman. Surrounding conservation areas include the Crystal River Preserve State Park and the Chassahowitzka National Wildlife Refuge which provide a sanctuary for all types of wildlife.

## SPECIFICATIONS & FEATURES



## Specifications & Features

<b>Uplands / Wetlands:</b>	1 ± Upland Acres / 407 ± Wetland Acres <ul style="list-style-type: none"><li>• Weekiwachee</li></ul>
<b>Soil Types:</b>	<ul style="list-style-type: none"><li>• Rock Outcrop</li><li>• Hallandale</li></ul>
<b>Taxes &amp; Tax Year:</b>	\$837.75 for 2022
<b>Zoning / FLU:</b>	CL MH - Low Intensity Coastal Lakes w/Manufactured Home(s) Allowed
<b>Lake Frontage / Water Features:</b>	Gulf of Mexico
<b>Current Use:</b>	Recreation
<b>Land Cover:</b>	Bay and Estuaries; Gulf of Mexico; Wetland Forested Mixed; Saltwater Marshes
<b>Structures &amp; Year Built:</b>	Boat Dock & Utility Building

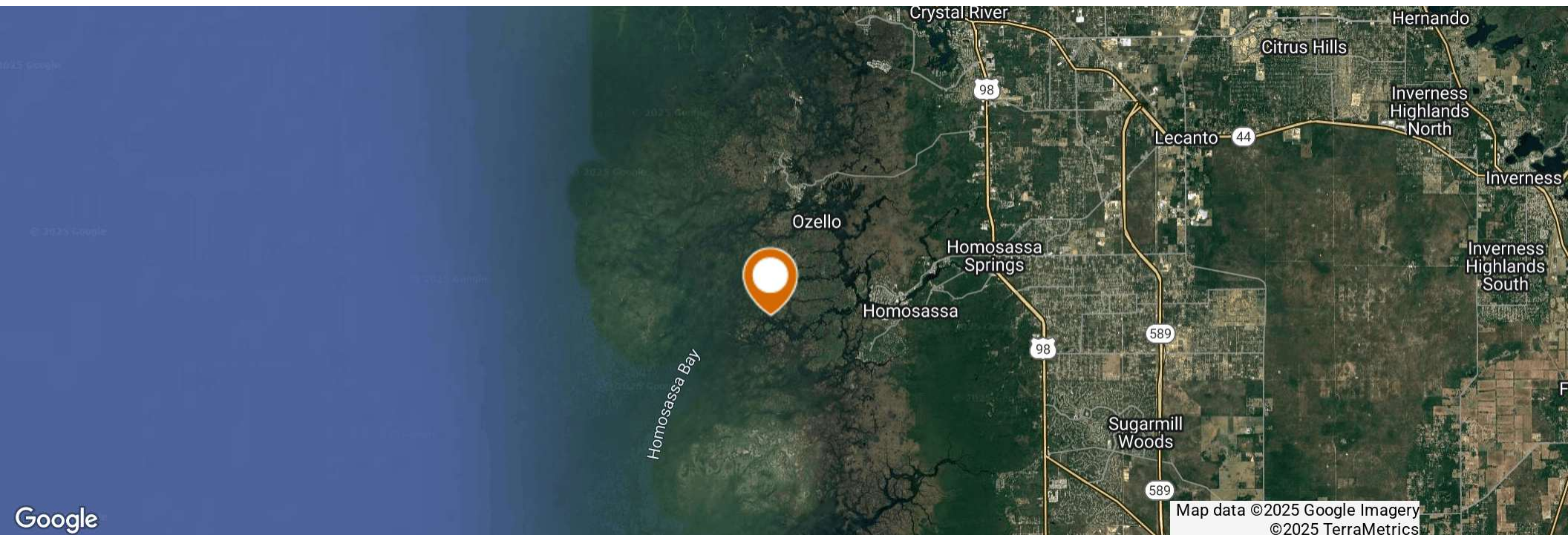


## LOCATION



## Location & Driving Directions

Parcel:	Multiple (7)
GPS:	28.7798676, -82.6798164
Driving Directions:	Boat access only
Showing Instructions:	Contact Listing Agents

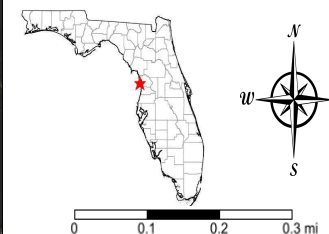




## Homosassa Islands Aerial

County Boundaries  
Polygons Drawing  
Lines Drawing  
Labels Drawing  
Points Drawing

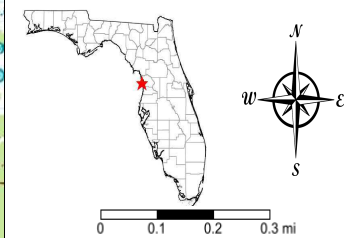
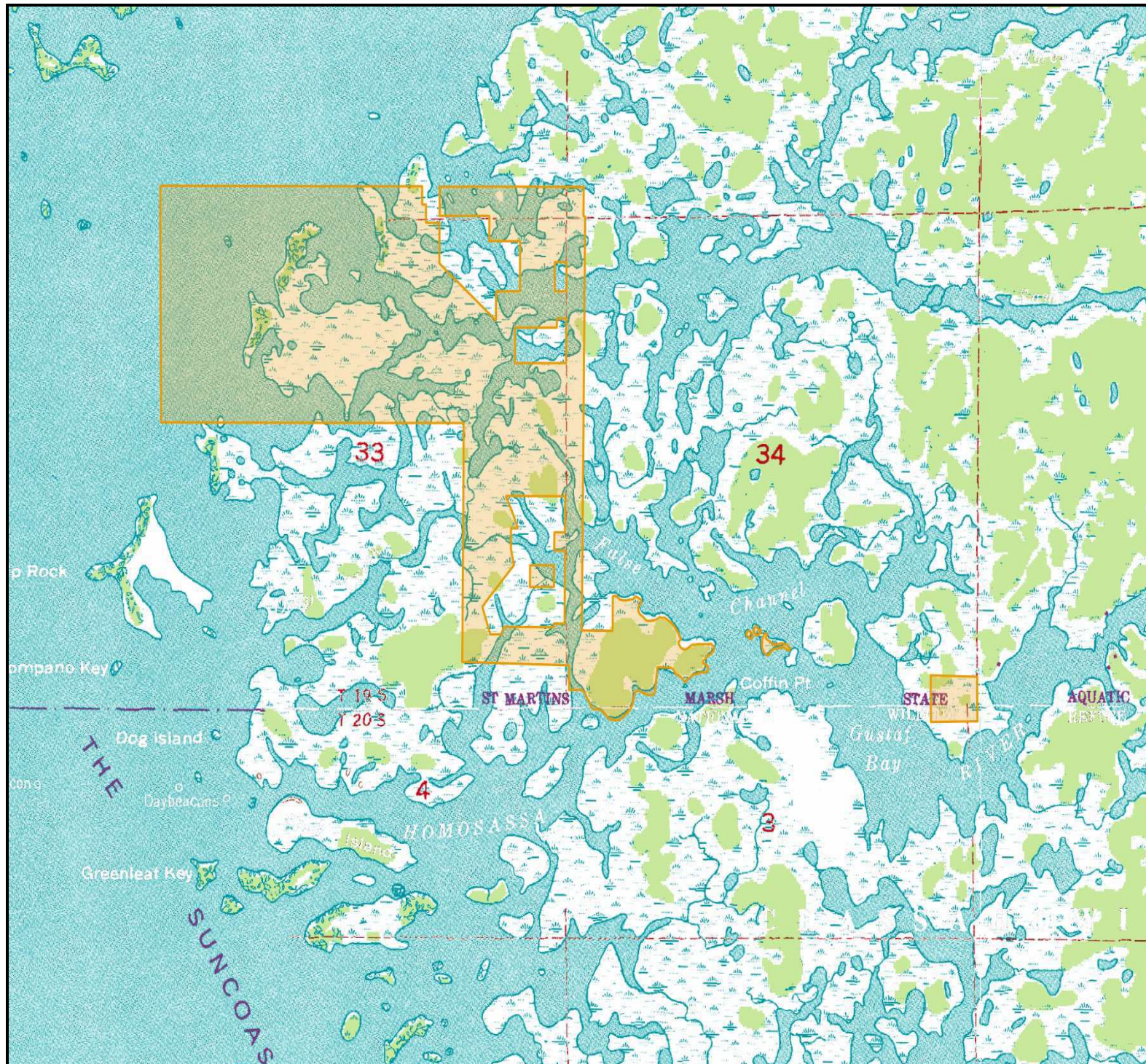
CODE	DESC	ACRES
E1ABL	Estuarine And Marine Deepwater	201.2
E2EM1P	Estuarine And Marine Wetland	79.6
E2SS3P	Estuarine And Marine Wetland	47.9
E2ABM	Estuarine And Marine Wetland	43.9
E2FO3P	Estuarine And Marine Wetland	16.9
E2SS1/3P	Estuarine And Marine Wetland	6.0
E2USM	Estuarine And Marine Wetland	5.3
E2USN	Estuarine And Marine Wetland	3.5
E1UBL	Estuarine And Marine Deepwater	3.2
TOTAL WETLANDS		407.6
TOTAL UPLANDS		0.1
TOTAL ACRES		407.6





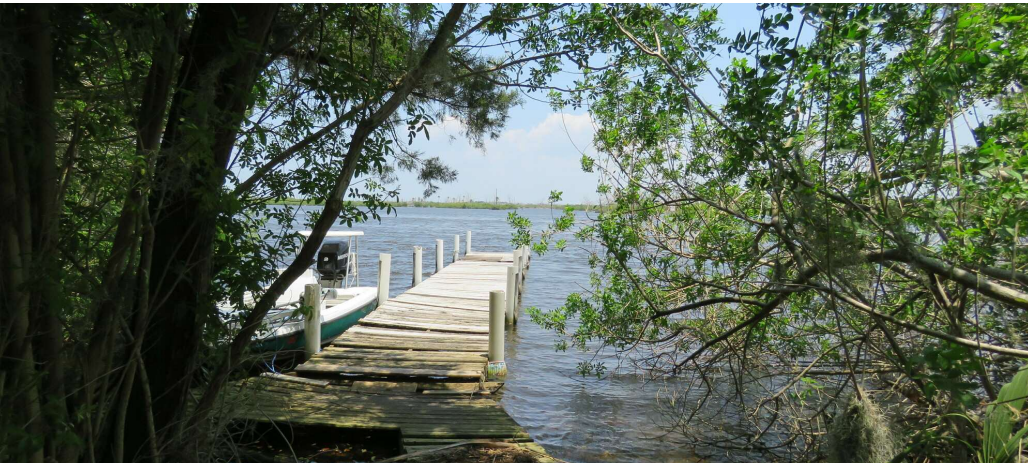
# Homosassa Isl TOPO

- County Boundaries
- Polygons Drawing
- Lines Drawing
- Labels Drawing
- Points Drawing





ADDITIONAL PHOTOS





ADDITIONAL PHOTOS







**SAUNDERS**  
REAL ESTATE



**SAUNDERS**  
LAND



**SAUNDERS**  
COMMERCIAL

## Serving the Southeast

At Saunders Real Estate, we deliver full-service real estate solutions across the Southeast, built on more than 30 years of trusted experience. Our dedicated teams—experts in both land and commercial real estate—offer tailored guidance backed by deep regional insight and a proven track record. We believe that successful outcomes start with strong relationships built on trust and a shared commitment to your goals.



877-518-5263 • [info@saundersrealestate.com](mailto:info@saundersrealestate.com)