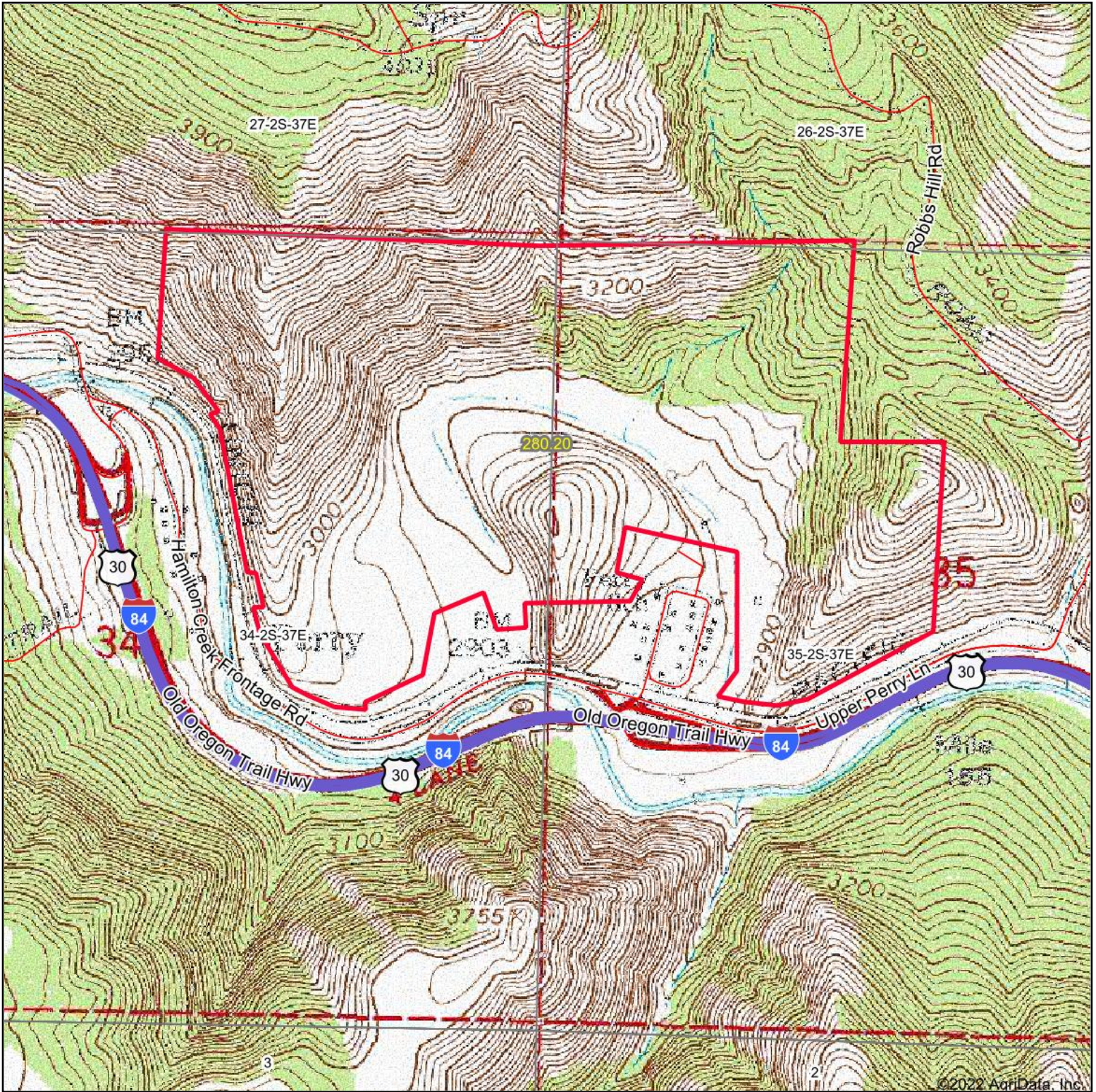
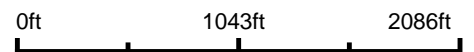


# Topography Map



map center: 45° 20' 57.94, -118° 9' 29.8



  
Intermountain  
Realty, Inc.

**34-2S-37E**  
**Union County**  
**Oregon**



Maps Provided By:  
  
CUSTOMIZED ONLINE MAPPING  
© AgriData, Inc. 2021      www.AgriDataInc.com

5/10/2022