



# Orange Oxbow Forest








300 Town Acres

Orange, Orange County, Vermont

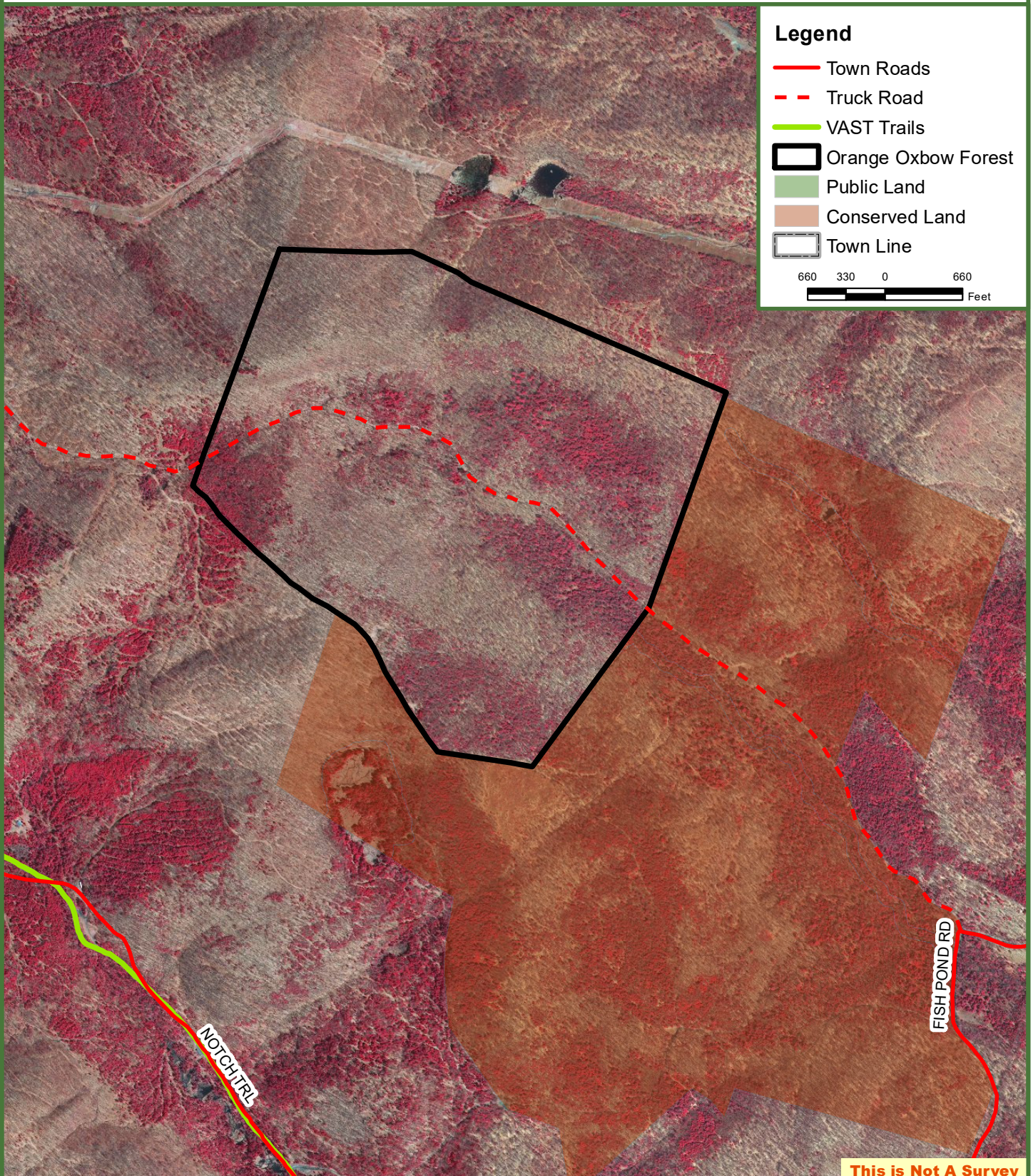


**Fountains  
Land**  
AN F&W COMPANY

## Legend

-  Town Roads
-  Truck Road
-  VAST Trails
-  Orange Oxbow Forest
-  Public Land
-  Conserved Land
-  Town Line

660 330 0 660  
Feet



**This is Not A Survey**

Map produced from the best available information including UVA map, town tax maps, hand held GPS data, aerial photography and reference information obtained from publicly available GIS sources. Boundary lines portrayed on this map are approximate and could be different than the actual location of boundaries found in the field. Map is not a survey.