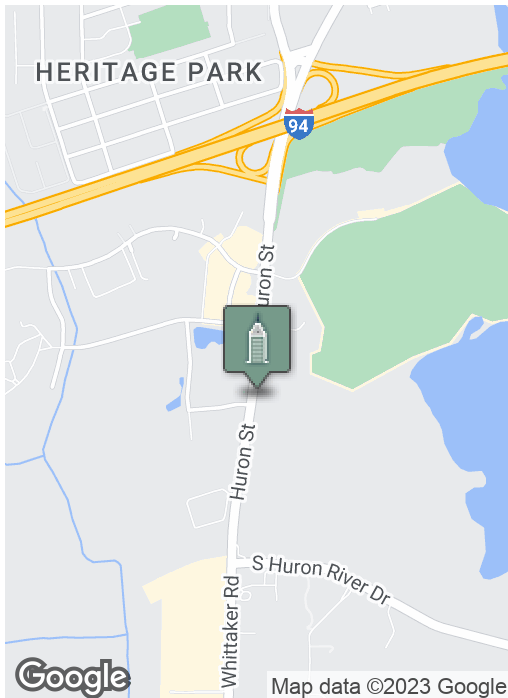
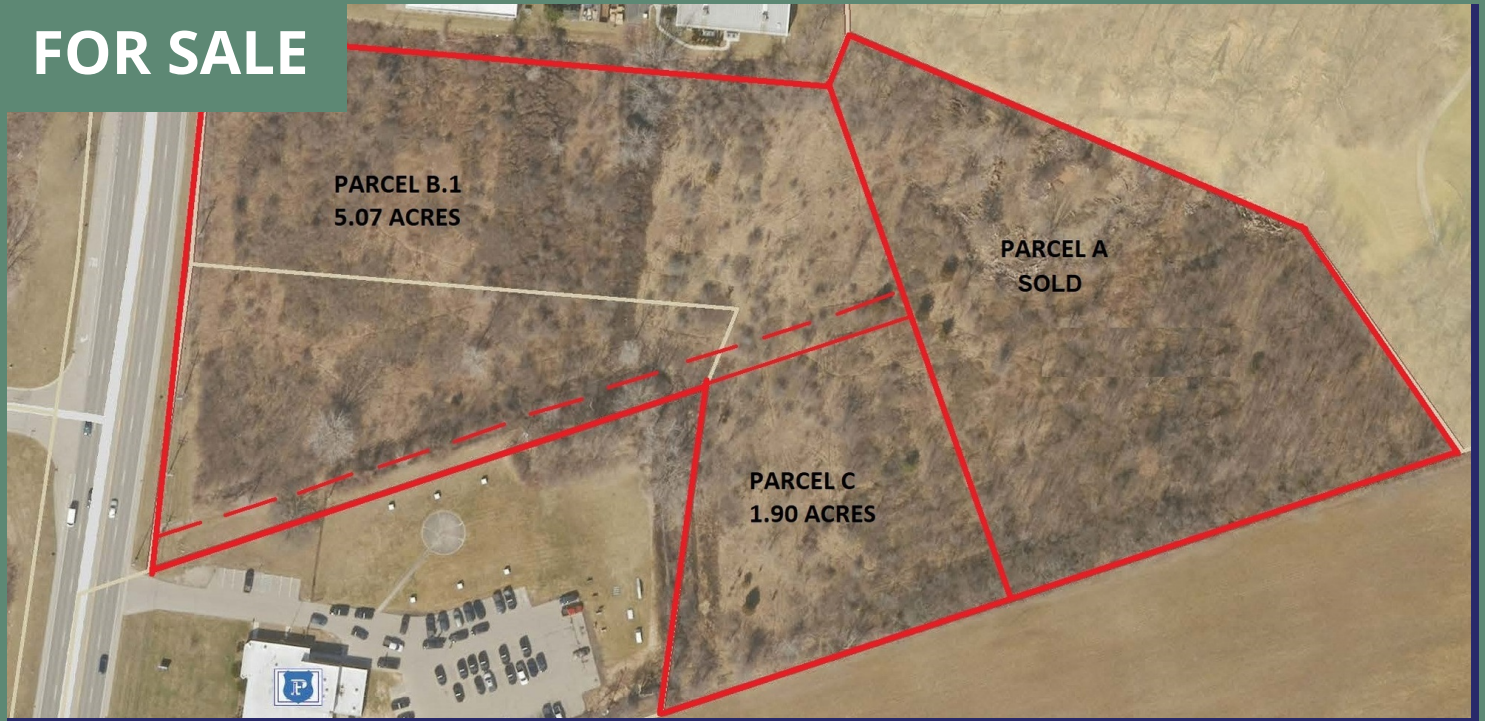




FOR SALE



SUMMARY

Parcel B.1:	5.07 acres \$850,000
Parcel C:	1.90 acres \$350,000
Zoning:	B-3 (General Business District)
Taxes:	TBD

PROPERTY OVERVIEW

Zoned B-3 just south of I-94 on Huron bordering Eastern Michigan University's Eagle Crest Golf Course. Excellent development area amidst retail, restaurants, grocery stores and neighborhoods. West of Ford Lake and south of Ypsilanti. Minutes from Willow Run Airport.

Land is currently zoned B3; General Business District. Permitted uses include: Retail, personal service, general office, medical office/clinic/urgent care, restaurant, hotel, house of worship, general assembly hall, private club, fitness/indoor recreation. Special uses include: auto/truck wash, service station, minor auto repair drive through restaurant. See attached zoning uses.

Tax ID numbers to be assigned. Property taxes TBD.

Building relationships.

208 East Washington Street Ann Arbor, MI 48104

734.663.0501

Charlie Koenn

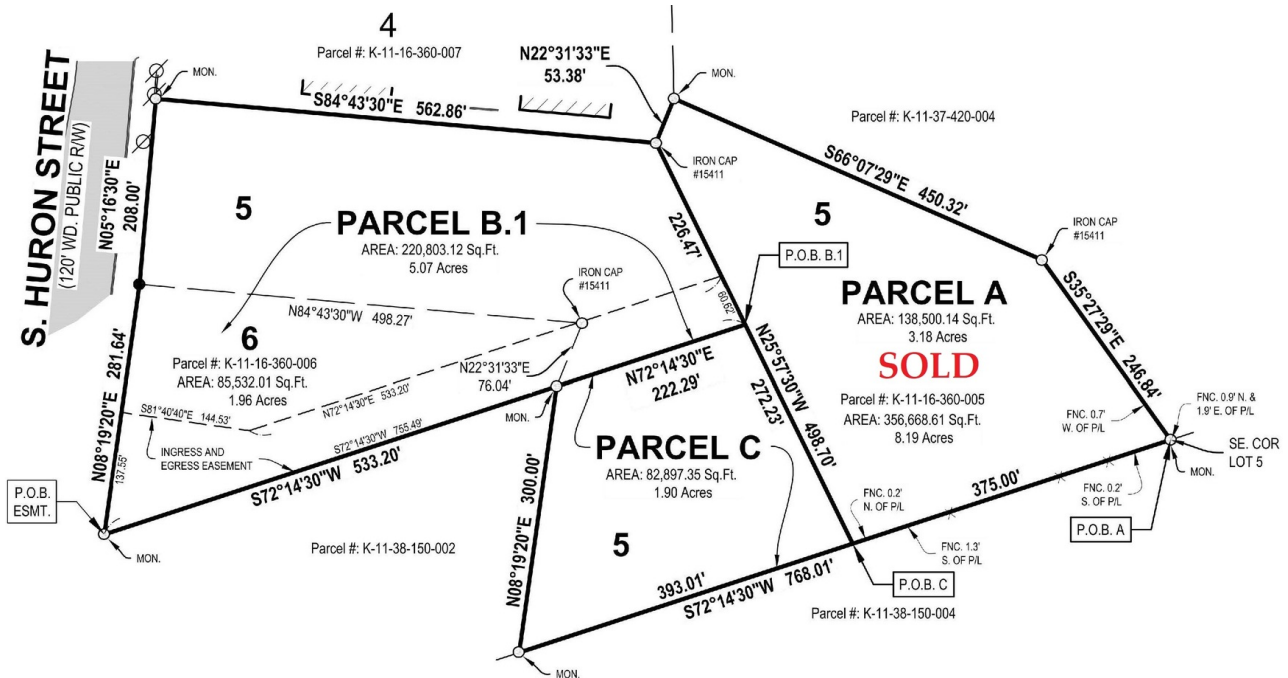
734.926.0230

CKOENN@SWISHERCOMMERCIAL.COM

SWISHERCOMMERCIAL.COM

Commercial Parcels - Zoned B-3 - Ypsilanti Twp

1481 S. HURON ST, YPSILANTI, MI 48197



Building relationships.

208 East Washington Street Ann Arbor, MI 48104

734.663.0501

Charlie Koenn

734.926.0230

CKOENN@SWISHERCOMMERCIAL.COM

SWISHERCOMMERCIAL.COM

Commercial Parcels - Zoned B-3 - Ypsilanti Twp

1481 S. HURON ST, YPSILANTI, MI 48197



Building relationships.

208 East Washington Street Ann Arbor, MI 48104

734.663.0501

Charlie Koenn

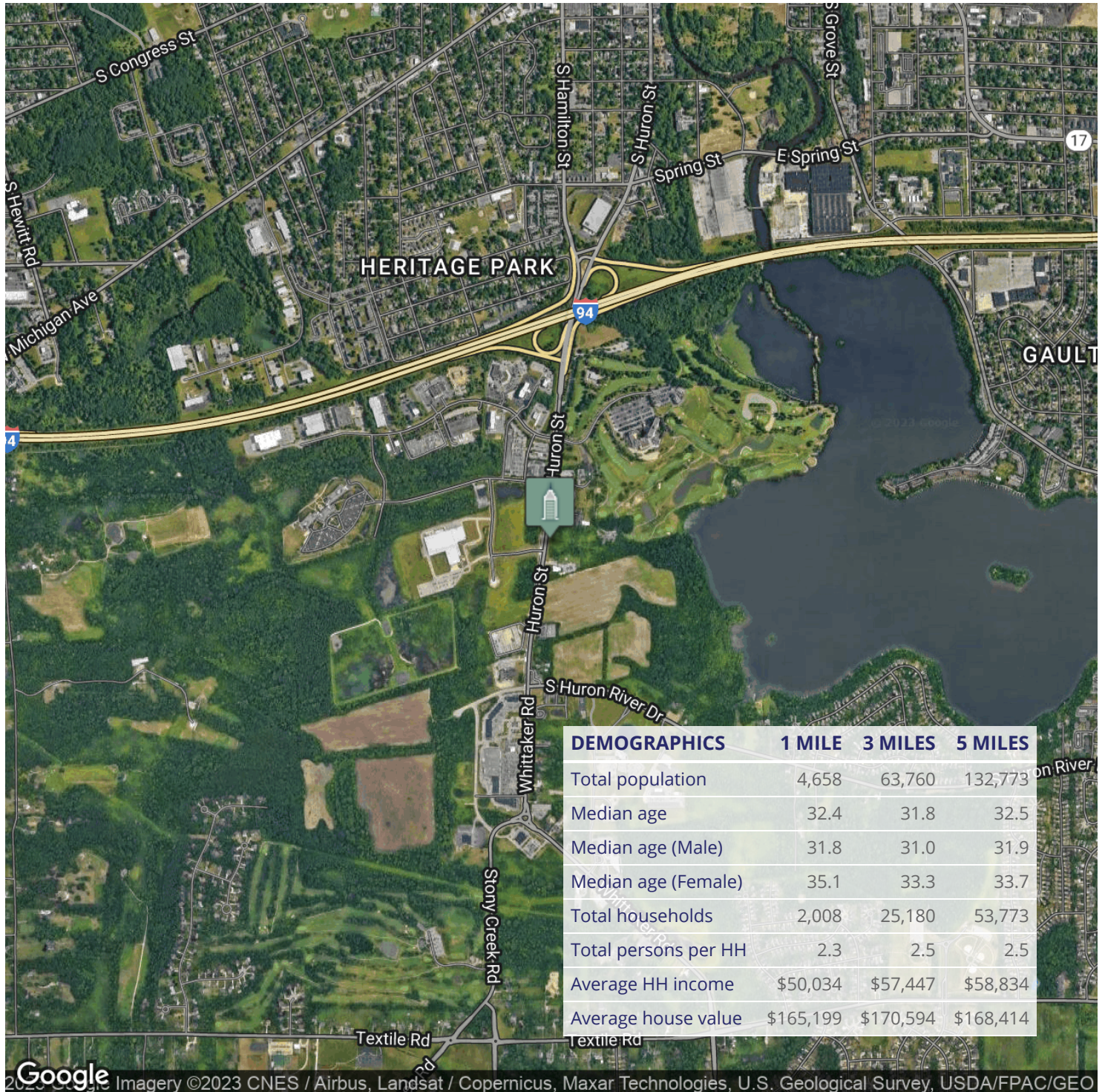
734.926.0230

CKOENN@SWISHERCOMMERCIAL.COM

SWISHERCOMMERCIAL.COM

Commercial Parcels - Zoned B-3 - Ypsilanti Twp

1481 S. HURON ST, YPSILANTI, MI 48197



Building relationships.

208 East Washington Street Ann Arbor, MI 48104

734.663.0501

Charlie Koenn

734.926.0230

CKOENN@SWISHERCOMMERCIAL.COM

SWISHERCOMMERCIAL.COM