

# Lick Skillet on Beaverdam Creek

Southern  
Land Exchange



**Mark Costello**  
*Agent*

1551 Jennings Mill Road  
Suite 1400 A  
Watkinsville GA 30677

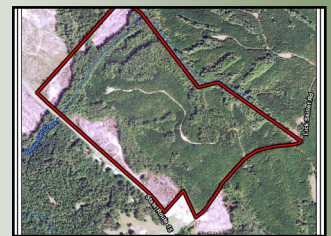
Phone: 706.549.5050  
Mobile: 706.207.5850  
Fax: 706.549.8909  
Email:  
[mcostello@southernlandexchange.com](mailto:mcostello@southernlandexchange.com)

Offered for \$3,395 per Acre



186 Acres | Hwy 15 | Greene County, GA | 30642

- Great Location!
- Hardwoods!
- Creek!



Great recreational or estate tract located minutes from Greensboro, I-20 and a straight shot to Watkinsville. This property has young planted pines and mature hardwood bottoms. Pick any nice hilltop and you'll have a great home site nestled as far back as you want or right on GA 15. Close to Lake Oconee and I-20! Call Mark Costello to view. 706-207-5850

[www.SouthernLandExchange.com](http://www.SouthernLandExchange.com)