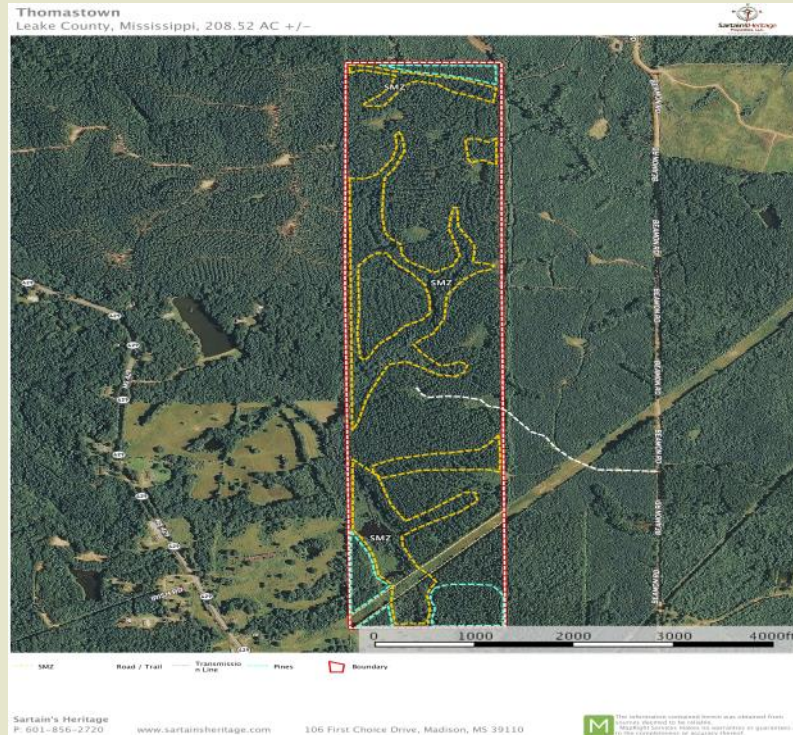


Thomastown 208.52 Acres +/- Leake County, MS



CONTACT:
J. PARKER SARTAIN
601.506.2398
 psartain@sartainsheritage.com

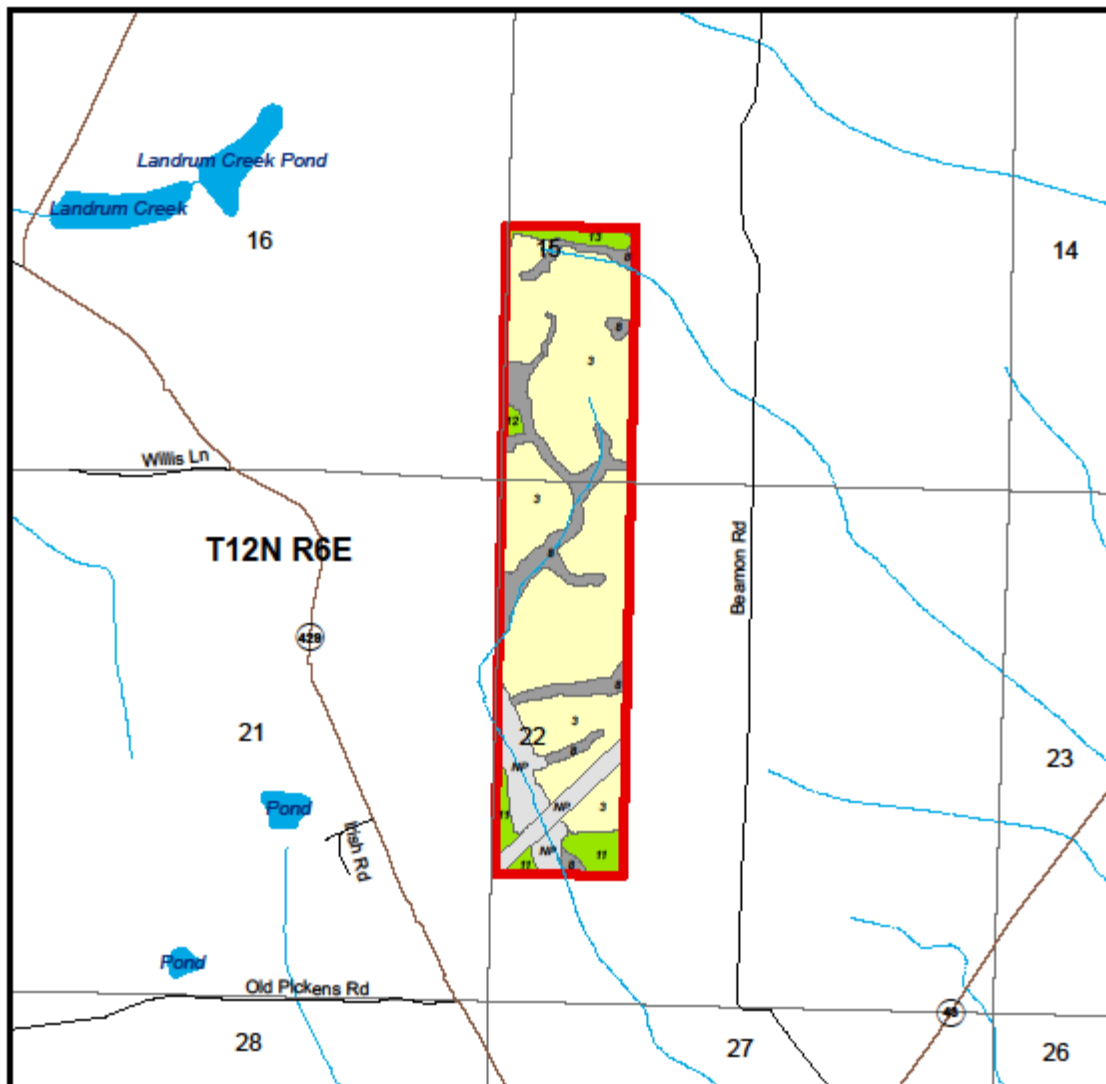
Sartain's Heritage Properties
 106 First Choice Drive
 Madison, MS 39110
 Phone: 601-856-2720
 Fax: 601-853-6765
 www.SartainsHeritage.com

208.52 acres located near Thomastown in Leake County, MS.

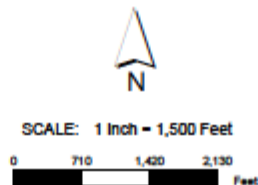
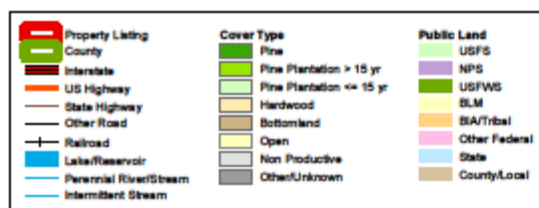
The timber consists of approximately 143 acres of cutover, 16 acres of thirty year pines and 50 acres of Streamside Management Zones, hardwood bottom and powerline easement. Access is permissive across the east adjoiner from Beamon Road.

Being only 1 mile west of the Natchez Trace and 2 miles west of The Yockanookany River this tract is well located for deer and turkey hunting.

\$317,993 (\$1,525 per acre)



Stand Map
Thomastown
Parcel # 28079Hb008
Leake County, MS - approx. 209 acres +/-



Stand #	Cover Type	Age	Acres
NP	Non Productive	NA	20.8
3	Open		142.8
8		63	29.0
11	Pine Plantation > 15 yr	30	9.7
12	Pine Plantation > 15 yr	30	1.4
13	Pine Plantation > 15 yr	30	4.8

The property depicted on this map has not been surveyed. The acreage is an estimate based upon GIS data. The volume information in this report is based on current information in the seller's inventory system. The information is subject to change due to harvest activities and/or updates resulting from routine maintenance of the inventory system. Neither the owner nor its officers, directors, employees or agents represent or warrant the accuracy or completeness of the ownership acreage, the cover type acreage, timber inventory species, grade or volumes, legal or practical access to the property, or operability.

4/27/2018